



科技  
创新  
新  
园

**COCVES<sup>®</sup>**

Our Vision Is Improving Your Safety



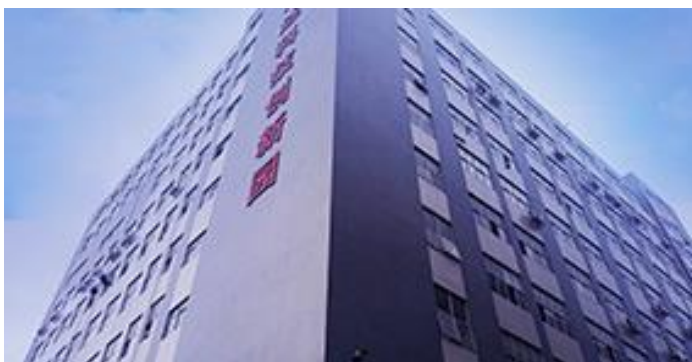
[support@brvision.com](mailto:support@brvision.com)



[www.brvision.com](http://www.brvision.com)

# COMPANY PROFILE

BRvision was founded in 2008 , has been rated as a high-tech company by the national government in 2019 , Specializing in Monitors,Cameras,Dash Camera,Parking Sensor , DVR etc , integrates R&D, production and sales .Mainly market is Europe and North America , BRvision set up its own quality management system. Passed the ISO9001,CE,FCC,EMARK,IP69K management certification system , BRvision mainly focuses on the R&D and design of independent products, and is committed to providing customers with perfect design solutions and we keep growing at 25-30% each year ,we believe we can provide better service , healthy and sustainable development for the global customers!



# STRENGTHS

As a up-rising star in this field, the advantages we have as follows:

★We are professional Vehicle camera system manufacturer with rich experience to serve ODM for all top famous brands in this field.

★We past all of the relative Certificates in this field, : E-mark, FCC,CE, ISO9001, E9, IP69K. We are applying for TS16949.

★We have good quality control, our products need to be doing tests such as Salt Spray Test, High&Low Temperature, humidity Test, Aging Test, Waterproof Test, Viewing angle Test, Color Test .....

★We have Own designing team for new products development, that's why we are good at OEM/ODM projects.

★We have two ERP systems, first for the production system, second for sales managment, and one project management system for R&D management.



# OUR SIGNIFICANCE

## Our Vision Is Improving Your Safety



Before



After

# OUR GOAL

Being Top Supplier of Commercial Vehicle  
Intelligent Video Safety System



# OUR BRAND

COCVES is our Brand  
CO: Cooperation  
CV: Creating Value  
ES: Efficient Service

BRvision registered for COCVES as our brand since 2018 that mean we operate this company base on cooperation, creating value, and effcient serivce for customer



# FAIR REVIEW

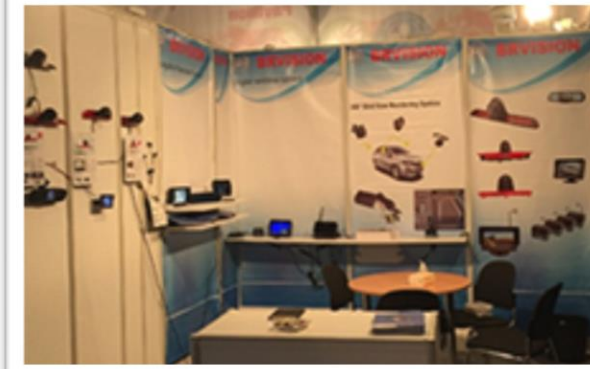
2014 Automechanika



2015 Sema show



2015 IAA show



2016 IAA show



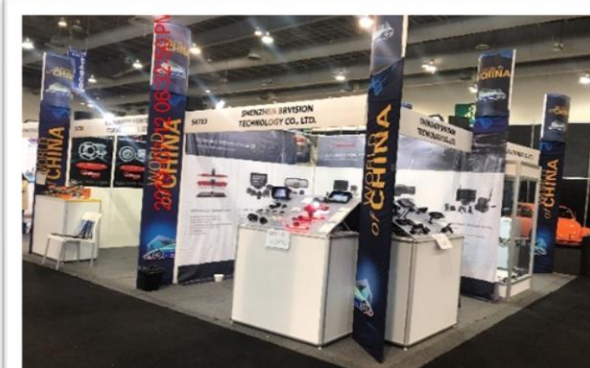
2018 Automechanika



2019 NACV show



2019 INA PAACE



2019 Automechanika



# CORE VALUES



Integrity



Cooperation



Innovation



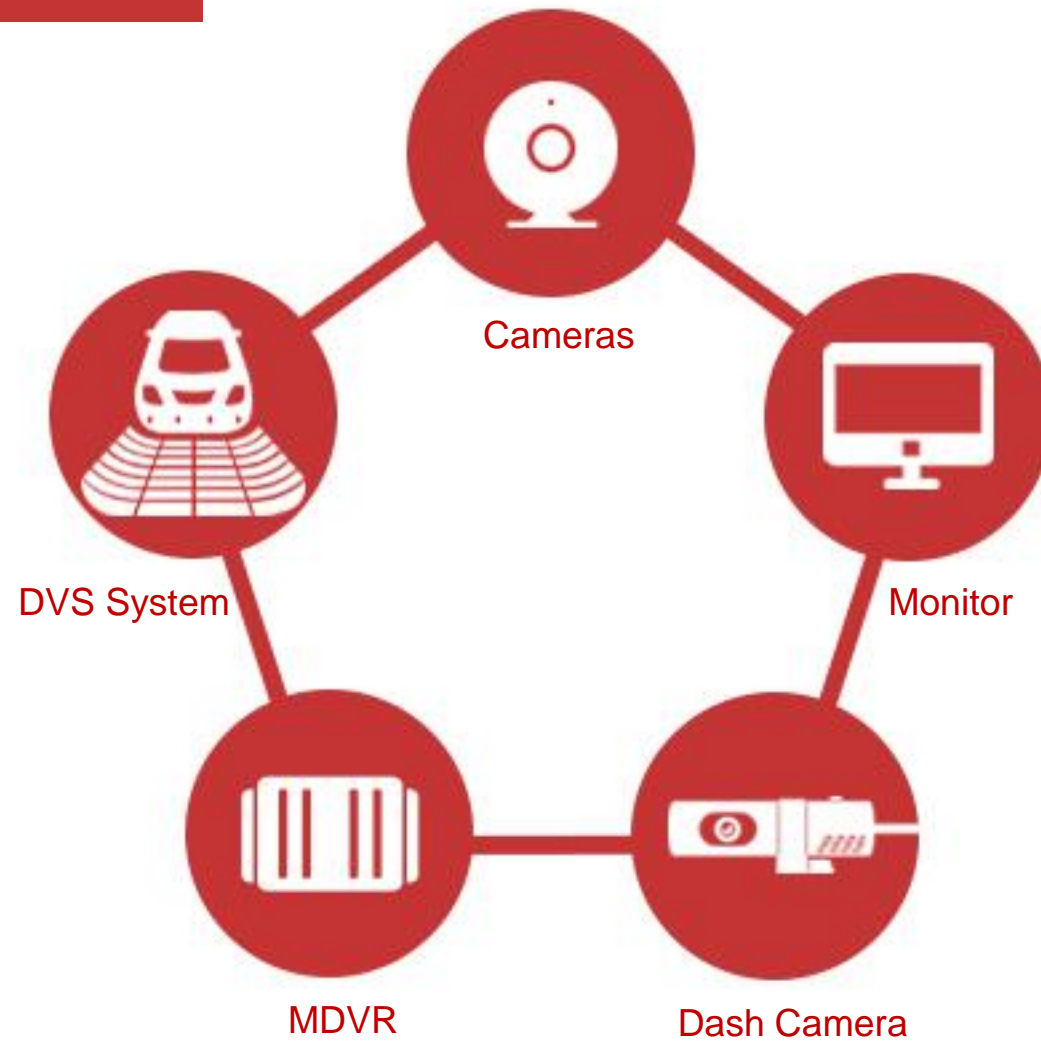
Create value



Efficient service

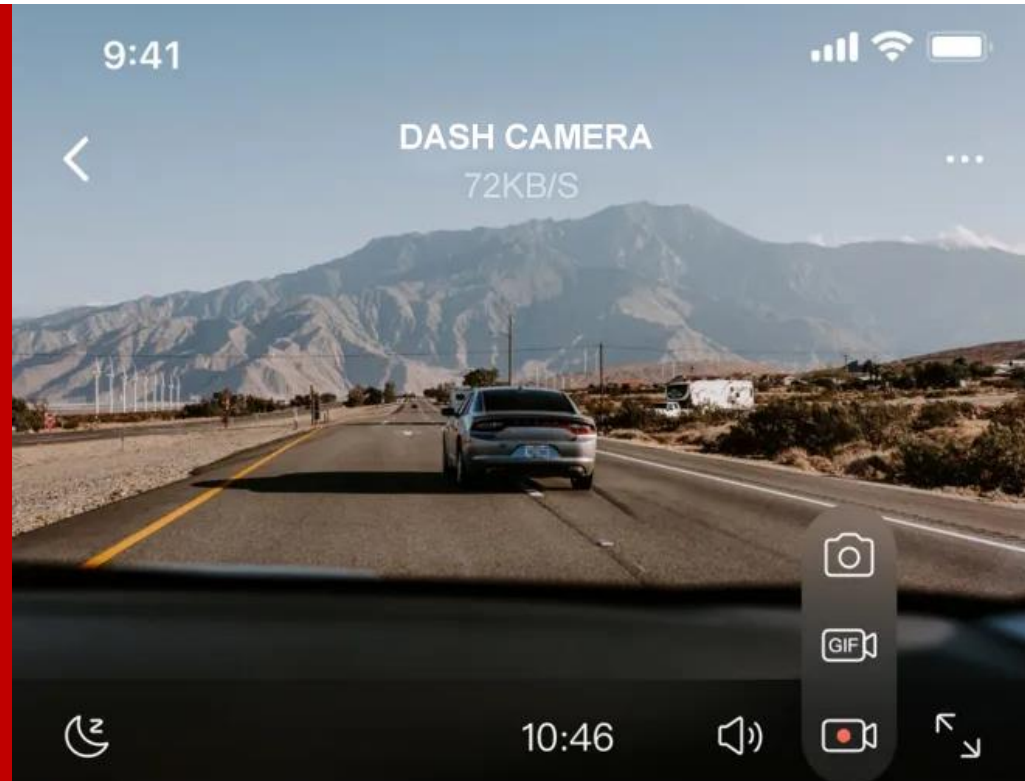


# OUR PRODUCTS



# Part 01

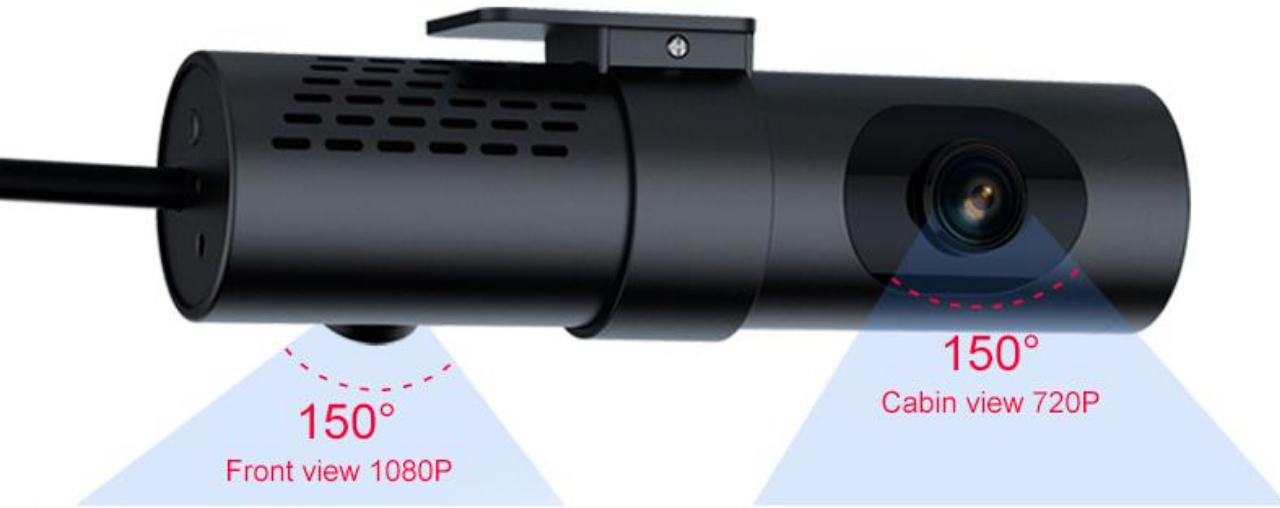
## DASH CAMERA



01  
PART

# DASH CAMERA

Smart Commercial Vehicle Dash Camera



## H.265, Lock/ Key, Unique Compact Design

- Built-in WIFI, 4G, GPS module, G-sensor
- 1920\*1080@30fps Resolution
- F,O,V 175° (D) 150° (H) 90° (V)
- Support HDMI interface
- Support APP remote monitoring
- Support GPS/GLONASS
- 256G TF Card storage
- 3M tape for easy installation



# DASH CAMERA

Protect Your Car While Driving or Parked

**HOT**



## BR-CRD02

- For Commercial Vehicle
- 4~128GB
- F,O,V 170C°(D) 140C°(H) 96C°(V)
- Tamper Resistant Design
- GPS Passive Receiver
- G-sensor & Parking Guard
- 360 degree rotation angle



## BR-CRD03

- Same function with CRD02
- F,O,V 170C°(D) 140C°(H) 96C°(V)
- powered from the front one
- With HeadphFront camera 1080P;  
Rear camera 720P
- back camera one connector
- G-sensor & Parking Guard



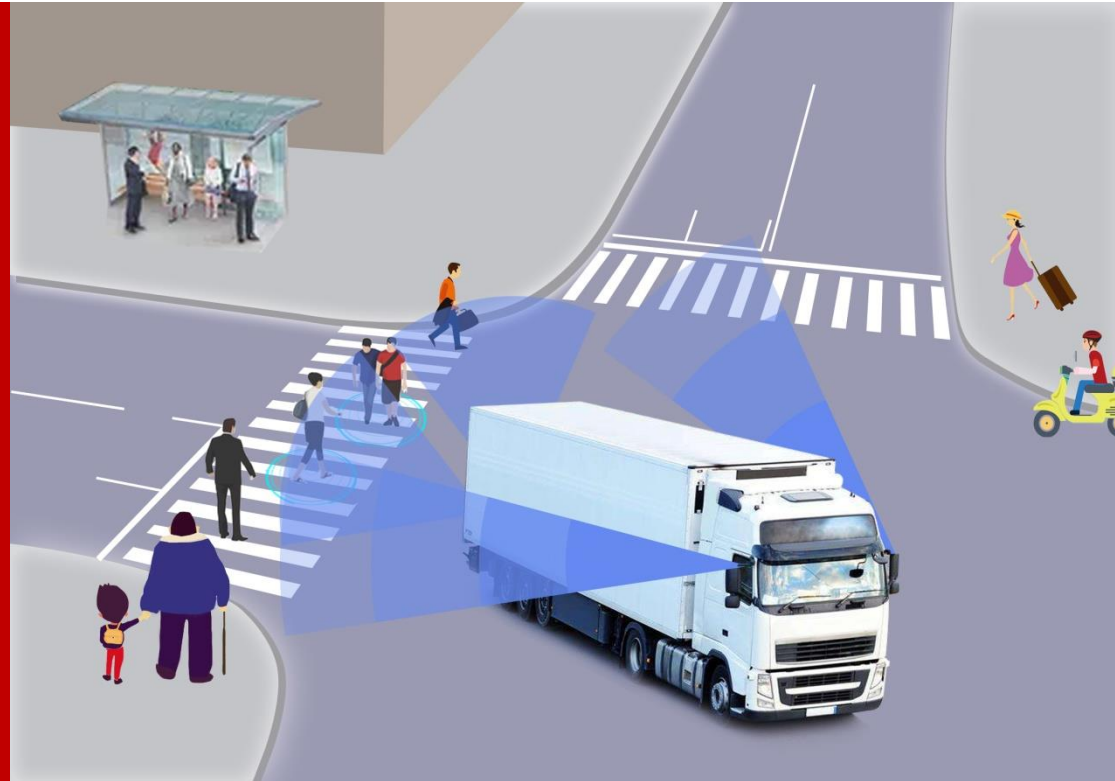
## BR-CRD04

- H.265,
- F/1080P/H150° , C/720P/H150°
- Lock/Key
- Same function with CRD02
- Dual lens, Front view 1080P and Inside view 720P
- Support HDMI Output to High brightness screen.
- 4G Transmission, support Real Time review
- Platform control, centralized management of thousands of vehicle



# Part 02

## DVS SENSOR SYSTEM



# DVS SENSOR SYSTEM

Perfect for parking, driving in reverse and crowded areas

## DVS Safe System Requirements

Blind spot camera

Audible Warning Alarms

Full HD Monitors

Sensor Detection



- ① Side Scan
- ② 0.8m/1.5m scan
- ③ IP69K
- ④ -40°C to +80°C
- ⑤ 12-35V

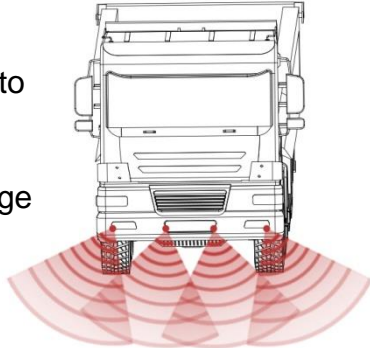
# DVS SENSOR SYSTEM

Perfect for parking, driving in reverse and crowded areas

## ① Front

4 sensor system fitted to front of vehicle.

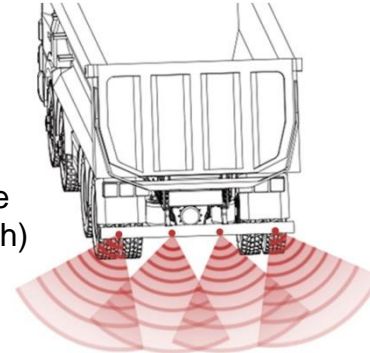
1.0/2.0m detection range (selectable via dip)



## ② Back

4 sensor system fitted to rear of vehicle

1.5/2.5m detection range (selectable via dip switch)



## ③ Corners

3 sensor system fitted to near side corner of vehicle

0.6./1.0m detection range (selectable via dip switch)



## ④ Steps

2 sensor system fitted to nearside cab step.

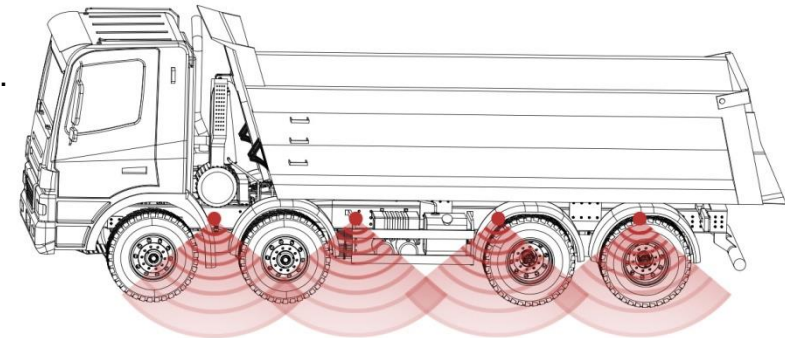
0.6./1.0m detection range (selectable via dip switch)



## ⑤ Sides( left / right)

4 sensor system fitted to side of vehicle.

0.8./1.5m detection range (selectable via dip switch)



# DVS SENSOR SYSTEM

Perfect for parking, driving in reverse and crowded areas



BR-PST01-Front



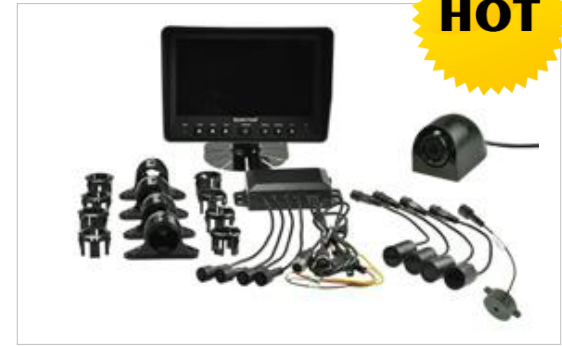
BR-PST01-Back



BR-PST01-Corner



BR-PST01-Step



BR-PST01-Left



BR-PST01-Right



BR-PST02



BR-PST01-D



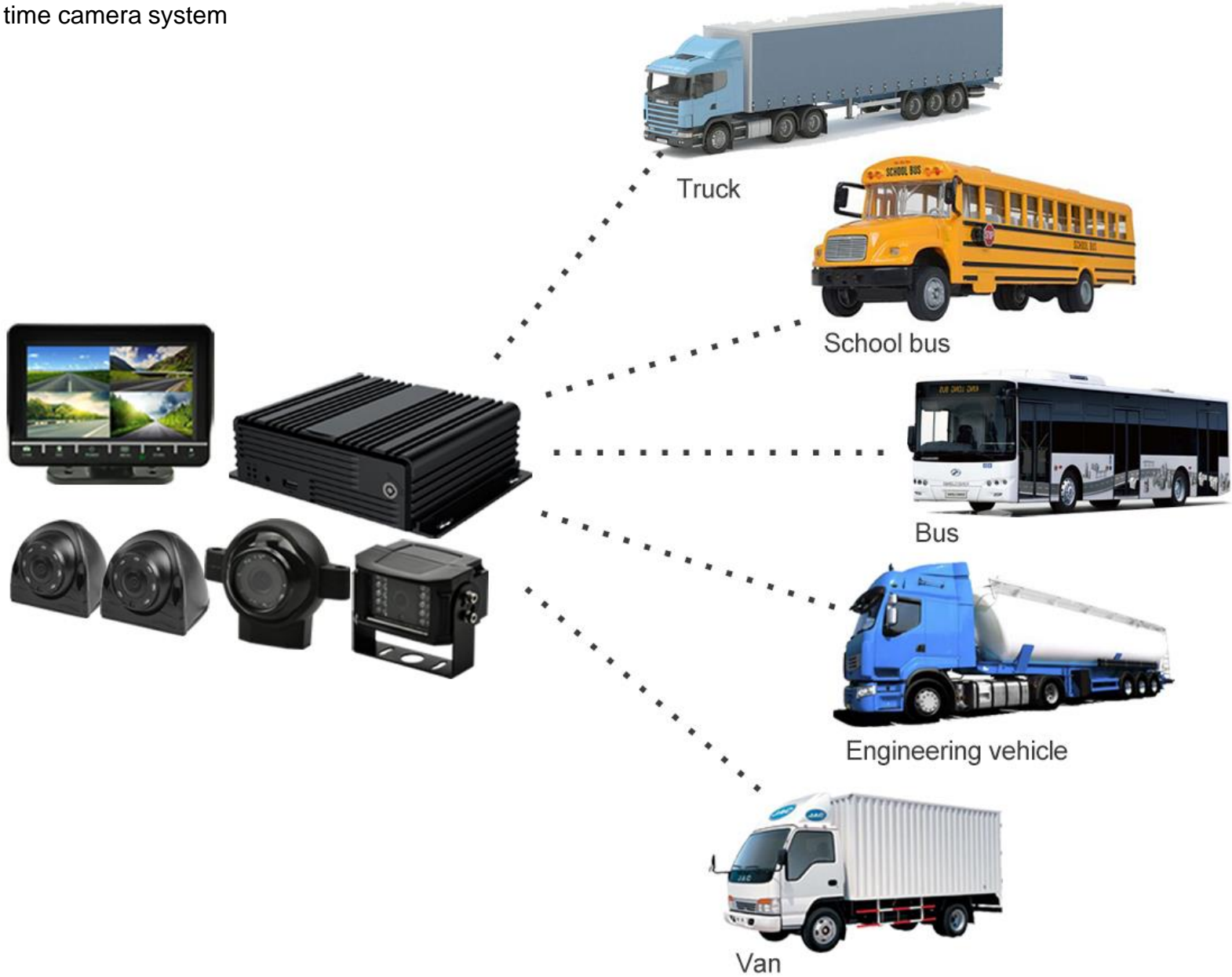
# Part 03

## MDVR



# H.265 MDVR

with full 1080P in real time camera system



# H.265 MDVR

with full 1080P in real time camera system

**HOT**



## BR-MDVR04

- ✦ H.265
- ✦ Unique compact design
- ✦ Full 1080P in real time
- 4-CH AHD MDVR
- Support 1080P / 720P
- Real time recording
- Support 2.5 inch HDD/SSD, maximum 4TB
- Support SD card storage, maximum 256GB



## BR-MDVR08

- ✦ H.265
- ✦ Unique compact design
- ✦ Full 1080P in real time
- 8-CH AHD MDVR
- Support 1080P / 720P
- Real time recording
- Support 2.5 inch HDD/SSD, maximum 4TB
- Support SD card storage, maximum 256GB

# Part 04

## SYSTEM



# WIRELESS SYSTEM



- With Rechargeable Magnetic Mount
- Digital signal
- High definition(720P)
- No delay
- No interference
- 2\*720P channel camera input at most
- IP69K



# WIRELESS SYSTEM

We have wireless system for trucks and cars, but this PPT mainly introduce the wireless system of trucks.



- ① 2.4G DIY magntic camera with 18650 battery
- ② System can work 10 hours and 8 hours when IR lamp is on
- ③ Camera with Transmitter built-in and magnetic, DIY installation for all vehicle
- ④ Wireless receiver box can supply the power to the current monitor
- ⑤ Wirless transfer distance around 100M
- ⑥ 9-36V power input



## WIRELESS SYSTEM

HOT



BR-704WS-BM

- ☀️ 7" 2.4G digital signal AHD wireless system
- ☀️ With Rechargeable Magnetic Mount
- ☀️ 10-36V power input
- ☀️ 720P

HOT



BR-704WS

- ☀️ 7" 2.4G digital signal wireless system
- ☀️ 2 camera input with 2 trigger cable
- ☀️ 10-36V power input
- ☀️ 720P



BR-502WS

- ☀️ 5" 2.4G digital signal wireless system
- ☀️ 2 camera input with 2 trigger cable
- ☀️ 10-36V power input
- ☀️ 700TVL



BR-4301WS

- ☀️ 4.3" 2.4G digital signal wireless system
- ☀️ 1 camera input with 1 trigger cable
- ☀️ 10-36V power input
- ☀️ 700TVL



# WIRED SYSTEM

## Reversing System Kit :

- 1pc monitor BR-TM7001
- 1pc rearview camera BR-RVC16
- 1pc extension cable BR-TC20





**BR-RVS5001**

- 5.0" LCD monitor 800x R.G.B x 480
- 500cd/m2
- Two video input
- 10-36V power input
- -30°C to +80°C

**BR-RVS5601**

- 5.6" LCD monitor 320x R.G.B x 234
- 250cd/m2
- Two video input
- 10-36V power input
- -30°C to +80°C

**HOT****BR-RVS7001**

- 7.0" LCD monitor 800x R.G.B x 480
- 500cd/m2
- Two video input
- 10-36V power input
- -30°C to +80°C

## WIRED SYSTEM

7"SYSTEM

**BR-TQS7001**

- ☀ 7" quad split screen system
- ☀ 4 camera input with 4 trigger cable
- ☀ 10-36V power input

**BR-704WPS**

- ☀ 7" waterproof screen system
- ☀ 4 camera input with 4 trigger cable
- ☀ 10-36V power input

**BR-702WPS**

- ☀ 7" waterproof screen system
- ☀ 2 camera input with 2 trigger cable
- ☀ 10-36V power input

**BR-TQS7002-DVR**

- ☀ 7" DVR monitor with quad split screen system
- ☀ 4 camera input with 4 trigger cable
- ☀ 10-36V power input



Truck



School bus



Bus



Engineering vehicle



Van

# WIRED SYSTEM

10.1"SYSTEM

**HOT**



## BR-TQS1001

- ☀ 10.1" quad split screen system
- ☀ 2 camera input with 2 trigger cable
- ☀ 10-36V power input

## BR-RVS1001

- ☀ 10.1" quad split screen system
- ☀ 4 camera input with 4 trigger cable
- ☀ 10-36V power input



Truck

School bus

Bus

Engineering vehicle

Van

# Part 05

**MIONTOR**



# MONITOR

4.3" MONITOR



**HOT**

## BR-TM4301

- ☀ Parking guide line selectable via button
- ☀ PAL and NTSC auto switching
- ☀ 10-36V power input
- 4.3" LCD monitor, 480x R.G.B x 272
- 350cd/m<sup>2</sup>
- One video input
- 10-36V power input
- -30°C to +80°C



## BR-TM4303

- ☀ Unique design with folding
- ☀ PAL and NTSC auto switching
- ☀ 10-36V power input
- 4.3" LCD folding monitor, 480x R.G.B x 272
- 350cd/m<sup>2</sup>
- One video input
- 10-36V power input
- -30°C to +80°C



**HOT**

## BR-TM4301-WP

- ☀ Unique design with waterproof IP69K
- ☀ PAL and NTSC auto switching
- ☀ 10-36V power input
- 4.3" LCD waterproof monitor, 480x R.G.B x 272
- 350cd/m<sup>2</sup>
- One video input
- 10-36V power input
- -30°C to +80°C

**BR-TM5001**

- ✧ Unique design
- ✧ PAL and NTSC auto switching
- ✧ 10-36V power input
- 5.0" LCD monitor, 800x R.G.B x 480
- 500cd/m<sup>2</sup>
- Two video input
- 10-36V power input
- -30°C to +80°C

**BR-TM5601**

- ✧ Unique design
- ✧ PAL and NTSC auto switching
- ✧ 10-36V power input
- 5.0" LCD monitor, 320 x R.G.B x 234
- 250cd/m<sup>2</sup>
- Two video input
- 10-36V power input
- -30°C to +80°C

**BR-TM5602**

- ✧ Unique design with touch button
- ✧ PAL and NTSC auto switching
- ✧ 10-36V power input
- 5.6" LCD monitor, 640 x R.G.B x 480
- 200cd/m<sup>2</sup>
- Two video input
- 10-36V power input
- -30°C to +80°C

**BR-TM5601-WB**

- ✧ Unique design without button
- ✧ 1 camera input, no trigger cable
- ✧ 10-36V power input
- 5.6" LCD monitor, 320 x R.G.B x 234
- 250cd/m<sup>2</sup>
- One video input
- 10-36V power input
- -30°C to +80°C

# RECORDING FUNCTION MONITOR

MONITOR WITH RECORDING /GPS FUNCTION



## BR-TMQ7002-DVR

- ✧ Unique design with recording function
- ✧ Support 128G SD card
- ✧ 10-36V power input
- 7.0" DVR monitor, 800 x R.G.B x 480
- 450cd/m<sup>2</sup>
- 4 video input
- 10-36V power input
- -30°C to +80°C



## BR-TMQ1001-DVR

- ✧ Unique design with recording function
- ✧ PAL and NTSC auto switching
- ✧ 10-36V power input
- 10.1" LCD monitor, WSVG 1024 x 600
- 450cd/m<sup>2</sup>
- 4 video input
- 10-36V power input
- -30°C to +80°C

# 7" MONITOR

WATEPROOF MONITOR



## BR-702WP

- 7" waterproof monitor (IP67),
- 2 camera input & 2 trigger cable
- 500cd/m2
- 10-36V, 4P lock connector
- Notes: IP67 waterproof monitor



## BR-704WP

- 7" waterproof monitor (IP67)
- Quad split screen
- 4 camera input & 4 trigger cable
- 500cd/m2
- 10-36V, 4P lock connector
- Notes: IP67 waterproof monitor





# 7" Digital 1080P AHD Monitor

BR-TM7004-AHD

- Headrest mount/U-Shaped bracket
- with 2 channel inputs
- support 1080P
- 2 camera input
- 2 Trigger cable
- warranty 2 years



<p><b>1</b></p> <p>U-shaped bracket</p>				
<p><b>2</b></p> <p>Headrest mount bracket</p>				

# 7" MONITOR

7" AHD MONITOR

**HOT**



## BR-TM7001-AHD

- ☀ Support 1080P/720P/CVBS signal
- ☀ PAL and NTSC auto switching
- ☀ 10-36V power input
- 7" 1080P LCD monitor ,1024xRGBx 600
- 450cd/m2
- 2 camera input
- 10-36V
- -30°C to +80°C

**HOT**



## BR-TMQ7001-AHD

- ☀ Support 1080P/720P/CVBS signal
- ☀ PAL and NTSC auto switching
- ☀ 10-36V power input
- 7" 1080P LCD monitor ,1024xRGBx 600
- 450cd/m2
- 4 camera input
- 10-36V
- -30°C to +80°C

**BR-TM7001**

- ☀ Unique design
- ☀ PAL and NTSC auto switching
- ☀ 10-36V power input
- 7.0" LCD monitor, 800 x R.G.B x 480
- 500cd/m2
- 2 video input
- 10-36V power input
- -30°C to +80°C

**BR-TM7001-DD**

- ☀ Unique design with double din
- ☀ PAL and NTSC auto switching
- ☀ 10-36V power input
- 7.0" LCD monitor, 800 x R.G.B x 480
- 500cd/m2
- 2 video input
- 10-36V power input
- -30°C to +80°C

**BR-TM7001-WB**

- ☀ Unique design
- ☀ 1 camera input & 1 trigger cable
- ☀ 10-36V power input
- 7.0" LCD monitor, 800 x R.G.B x 480
- 500cd/m2
- 1 video input
- 10-36V power input
- -30°C to +80°C

# 7" MONITOR

STANDARD MONITOR



## BR-TM7002L

- ☀️ Unique design
- ☀️ Good price
- ☀️ 10-36V power input
- 7.0" LCD monitor, 800x R.G.B x480
- 200cd/m2
- 3 video input
- 10-36V power input
- -30°C to +80°C



## BR-TM7002L-N

- ☀️ Unique design
- ☀️ 3 camera input & 3 trigger cable
- ☀️ 10-36V power input
- 7.0" LCD monitor, 800x R.G.B x480
- 200cd/m2
- 3 video input
- 10-36V power input
- -30°C to +80°C



## BR-MM7001

- ☀️ Clip on mount bracket
- ☀️ Good price
- ☀️ 10-36V power input
- 7" Digital TFT Mirror Monitor, 800x R.G.B x480
- 200cd/m2
- 2 video input
- 10-36V power input
- -30°C to +80°C

## 10.1" Monitor

## Standard Monitor

**BR-TM1001**

- ☀️ Unique design
- ☀️ PAL and NTSC auto switching
- ☀️ 10-36V power input
- 10.0" LCD monitor, WSVG 1024 x 600
- 450cd/m2
- 2 video input
- 10-36V power input
- -30°C to +80°C

**BR-TMQ1001**

- ☀️ Unique design
- ☀️ PAL and NTSC auto switching
- ☀️ 10-36V power input
- 10.1" LCD monitor, WSVG 1024 x 600
- 450cd/m2
- 4 video input
- 10-36V power input
- -30°C to +80°C

## AHD Monitor

**BR-TM1001-AHD**

- ☀️ Support 1080P/720P/CVBS signal
- ☀️ PAL and NTSC auto switching
- ☀️ 10-36V power input
- 10.1" LCD monitor, 1024 x R.G.B x 600
- 450cd/m2
- 2 video input
- 10-36V power input
- -30°C to +80°C

**BR-TMQ1001-AHD**

- ☀️ Support 1080P/720P/CVBS signal
- ☀️ PAL and NTSC auto switching
- ☀️ 10-36V power input
- 10.1" LCD monitor, 1024x R.G.B x 600
- 450cd/m2
- 4 video input
- 10-36V power input
- -30°C to +80°C

# Part 06

**CAMERA**



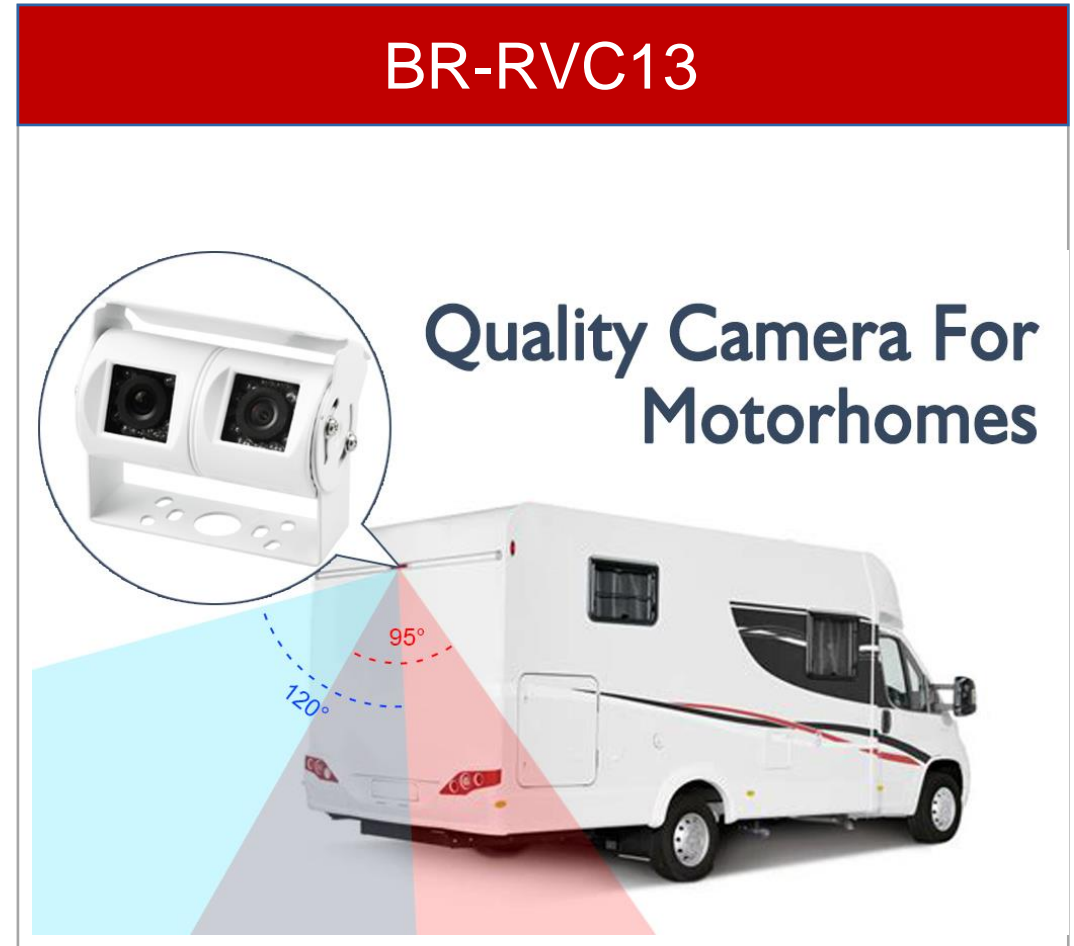
# CAMERA FOR TRUCK

## BR-RVC06



☀ 720P AHD Camera

## BR-RVC13



- ☀ Stainless steel shell Rust Proof
- ☀ Dual lens unique design lens
- ☀ With heating function
- ☀ IP69K high waterproof rate

# COMPACT CAMERA



**HOT**

## BR-RVC08-M2

- ☀ With IR lighting
- ☀ Mini side
- ☀ 700TVL/720P optional
- Mini side view camera
- CMOS/CCD optional
- 700TVL/720P
- F,O,V:170°(D)110°(H)90°(V)
- 12V±10% power input
- -30°C to +80°C



**HOT**

## BR-RVC06

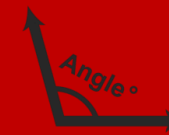
- ☀ Wide angle in 170 degree
- ☀ Without IR lighting
- ☀ 700TVL/720P/1080P optional
- Compact super wide angle camera
- CMOS/CCD optional
- 700TVL/720P
- F,O,V:170°(D)110°(H)90°(V)
- 12V±10% power input
- -30°C to +80°C



**HOT**

## BR-MNC10

- ☀ MINI Size wide angle camera
- ☀ With stainless steel housing
- ☀ Silver color
- IP69K
- Mirror image
- IR for night vision
- N/P system
- H:102°
- 4P Lock connector





# BULLET CAMERA



## BR-MNC06

- ☀ With IR lighting
- ☀ Mini side
- ☀ 700TVL/720P optional
- IP rating : IP69K
- Image Sensors :1/3"CMOS
- Resolution(TV lines) :700TVL
- View Angel:120°(D) 95°(H) 70°(V)
- 5M RCA connector extension cable



## BR-MNC06-S

- ☀ stainless steel camera
- ☀ IP69K waterproof rating
- View Angel: H:160°/D:180°/V:93°
- Mirror image,
- N/P System,
- 4P lock connector
- 5-28V power input
- -40C° to +80C° operation Temp



## BR-MNC06-SW

- ☀ Stainless steel camera
- ☀ IP69K waterproof rating.
- View Angel: H:160°/D:180°/V:93°
- No IR
- Mirror/Normal image,
- N/P System,
- 4P lock connector
- 5-28V power input
- -40C° to +80C° operation Temp

# REAR VIEW CAMERA FOR TRUCK



## BR-RVC16

- ✦ Unique design
- ✦ With IR lighting
- ✦ 700TVL/720P/1080P optional
- Standard rear view camera
- CMOS/CCD optional
- 700TVL/720P/1080P
- F,O,V:120°(D)95°(H)70°(V)
- 12V±10% power input
- -30°C to +80°C



## BR-RVC07-N1

- ✦ Wide angle in 160 degree
- ✦ With IR lighting
- ✦ 700TVL/720P optional
- Rear view camera with IR lamps
- CMOS/CCD optional
- 700TVL/720P
- F,O,V:190°(D)160°(H)120°(V)
- 12V±10% power input
- -30°C to +80°C



## BR-RVC14

- ✦ With IR lighting
- ✦ 700TVL/720P optional
- ✦ Easy installation
- Shark mount rear view camera
- CMOS/CCD optional
- 700TVL/720P
- F,O,V:120°(D)95°(H)70°(V)
- 12V±10% power input
- -30°C to +80°C



## BR-RVC13

- ✦ With IR lighting
- ✦ Dual lens
- ✦ With heating available
- Dual lens rear view camera
- CCD/CMOS
- 700TVL/720P
- reversing view 120°/ back view 95°
- F,O,V:120°(D)95°(H)70°(V)
- F,O,V:95°(D)70°(H)55°(V)
- 12V ±10%power input
- -30°Cto +80°C



# SIDE VIEW CAMERAS FOR TRUCK

## BR-RVC08-M2



- ☀ IP69K
- ☀ 1/3 CCD/CMOS or AHD for optional
- ☀ IR for Night vision
- ☀ F,O,V 170C°(D) 110C°(H) 90C°(V)
- ☀ Metal housing

## BR-RVC07-JC

### 1 Easy installation



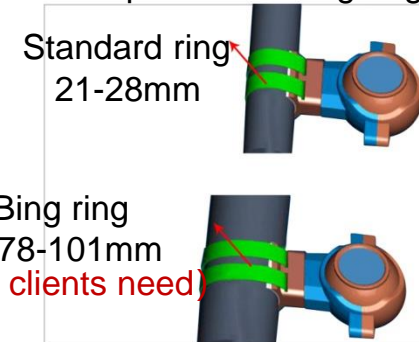
- ☀ IP 69K
- ☀ F,O,V 120C°(D) 95C°(H)70C°(V)
- ☀ CCD/CMOS/AHD720P for option



### 2 This function can be added if you need



### 3 The standard ring can be replaced with big ring



(Extra cost if clients need)

## SIDE VIEW CAMERAS FOR TRUCK

**BR-RVC08**

- ☀ With IR lighting
- ☀ 700TVL/720P/1080P optional
- ☀ With heater available
- Standard side view camera
- CMOS/CCD optional
- 700TVL/720P/1080P
- F,O,V:120°(D)95°(H)70°(V)
- 12V±10% power input
- -30°C to +80°C

**BR-RVC08-White**

- ☀ With IR lighting
- ☀ 700TVL/720P optional
- ☀ Color in white available
- Standard side view camera in white
- CMOS/CCD optional
- 700TVL/720P/1080P
- F,O,V:120°(D)95°(H)70°(V)
- 12V±10% power input
- -30°C to +80°C

**BR-RVC07-AC**

- ☀ With IR lighting
- ☀ 700TVL/720P /1080P optional
- ☀ Clamp bracket adjustable
- Mirror arm bracket camera
- CMOS/CCD optional
- 700TVL/720P/1080P
- F,O,V:120°(D)95°(H)70°(V)
- 12V±10% power input
- -30°C to +80°C

**BR-RVC07-JC**

- ☀ With IR lighting
- ☀ 700TVL/720P/1080P optional
- ☀ Clamp bracket adjustable
- Standard front view camera with Jubilee clip
- CMOS/CCD optional
- 700TVL/720P/1080P
- F,O,V:120°(D)95°(H)70°(V)
- 12V±10% power input
- -30°C to +80°C

# INSIDE CAMERAS FOR TRUCK

## BR-RVC17

### Window flush mount camera



- ☀ Best image quality,
- ☀ Easy installation
- ☀ IP65K
- CMOS/CCD optional
- 700TVL/720P
- F,O,V:170°(D)110°(H)90°(V)
- 12V±10% power input
- -30°C to +80°Coperation Temp

## BR-RVC02

### Front camera for DVR



- ☀ Best image quality,
- ☀ Star light night vision image (720P/1080P)
- ☀ 4 IR led for cabin view at night

- 720P/1080P
- F,O,V:120°(D)95°(H)70°(V)
- 12V±10% power input
- -30°C to +80°Coperation Temp



## INSIDE CAMERAS FOR TRUCK

## Inside Camera

**BR-RVC07-N**

- ☀ Night version with IR
- ☀ 120/170 degree optional
- ☀ IP69K

- Fish eye camera
- 1/3CCD/CMOS
- 700TVL/720P/1080P
- F,O,V:170°(D)110°(H)90°(V)
- 12V±10% power input
- -30°C to +80°C operation Temp

## Wide Angle

**BR-RVC02**

- ☀ Best image quality,
- ☀ Star light night vision image (720P/1080P)
- ☀ 4 IR led for cabin view at night

- Front camera for DVR
- 720P/1080P
- F,O,V:170°(D)110°(H)90°(V)
- 12V±10%power input
- -30°C to +80°Coperation Temp

## Front Camera

**BR-RVC17**

- ☀ Best image quality,
- ☀ Easy installation
- ☀ IP65K

- Window flush mount camera
- CMOS/CCD optional
- 700TVL/720P
- F,O,V:170°(D)110°(H)90°(V)
- 12V±10% power input
- -30°Cto +80°Coperation Temp

**HOT****BR-RVC07**

- ☀ Night version with IR
- ☀ Best image quality!
- ☀ IP69K

- Front view camera
- CMOS/CCD optional
- 700TVL/720P/1080P
- F,O,V:120°(D)95°(H)70°(V)
- 12V ±10%power input
- -30°Cto +80°Coperation Temp

# 06 PART OE BRAKE LIGHT CAMERA



Brake Light Camera



Rearview Mirror Monitor



- ☀ Fits Opel Vivaro 2014
- ☀ Vauxhall Vivaro 2014
- ☀ Renault Trafic 2014

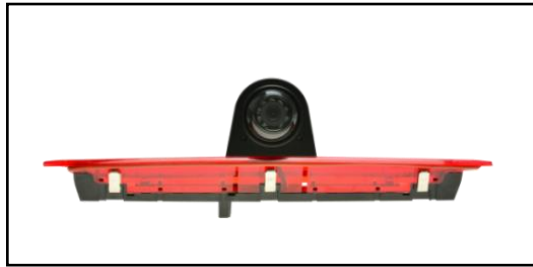
- 1/3 CMOS,700TVL
- AHD 720P/1080P
- IP69K waterproof rating.
- F,O,V:170°(D)110°(H)90°(V)
- 10-36V input

## OE BRAKE LIGHT CAMERA

HOT

**BR-RVC07-GV**

Universal brake light camera  
2011/(2012 & UP) Nissan NV2500,  
Nissan NV 3500

**BR-RVC07-FT**

(2014~current) Ford Transit

**BR-RVC07-SC**

Mercedes Sprinter 314cdi 2016-2021 &  
VW Crafter from 2006 to 2016 b

**BR-RVC07-FD**

Fiat Ducato, Peugeot Box,  
Citroen Jumper

**BR-RVC07-RT**

Opel Vivaro 2014 Vauxhall  
Vivaro 2014, Renault Trafic 2014

**BR-RVC07-VC**

Volkswagen Caddy

**BR-RVC07-TC**

Ford Transit Custom 2015

**BR-RVC07-RM**

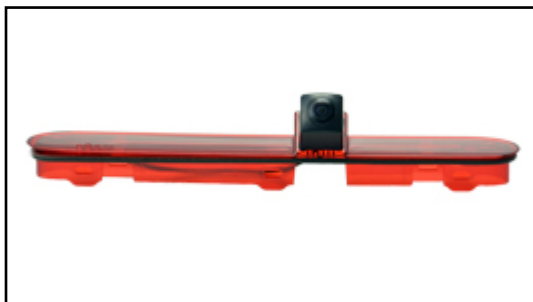
Renault Master  
Opel Movano  
Nissan NV400





**BR-RVC07-ID**

Iveco Daily 2011-2014



**BR-RVC07-PE**

2016>Peugeot Expert,  
2016>Citroen SpaceTourer  
2016>Toyota ProAce



**BR-RVC07-VT**

Volkswagen Transporter T5  
(2010 --2015)



**BR-RVC07-TC-LED**

Ford Transit Custom LED  
(2016.5->Current)



**BR-RVC20**

Universal brake light camera



**BR-RVC22**

Volkswagen Crafter 2017



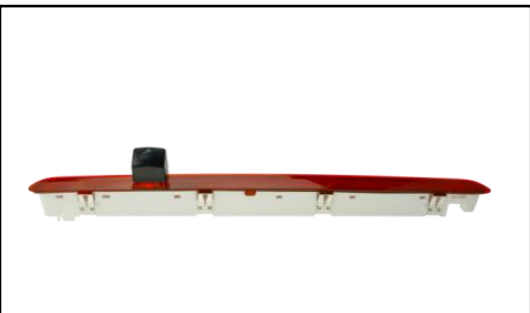
**BR-RVC07-GV-LED**

Universal brake light camera  
3pcs 5W white high bright light



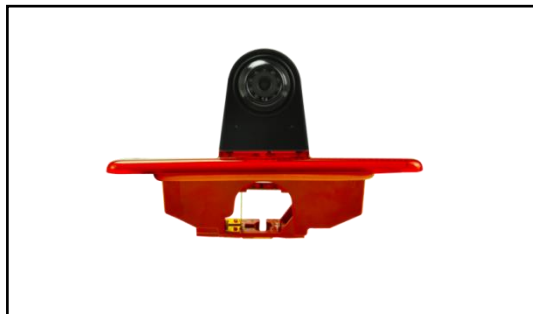
**BR-RVC23**

Renault Trafic(2001-2014),  
Citroen Combo(2001-2011),  
Vauxhall Vivaro(2001-2014)



**BR-RVC21**

Volkswagen Transporter T6



**BR-RVC07-PP**

Citroën Jumpy/Peugeot Expert/  
Toyota Proace 2007 - 2016



**BR-RVC24**

universal brake light camera



**BR-RVC24-2**

universal brake light camera



**BR-RVC25**

Ford Transit Connect (2014---2017)



**BR-RVC28**

Opel Combo(2011–2017),  
Fiat Doblò(2010–present)



**BR-RVC07-VM**

Mercedes-Benz Vito 2016



**BR-RVC24-2(Filter box)**

Filter box(switch box) for  
two lens brake light camera

## OE BRAKE LIGHT CAMERA

**BR-RVC07-FD(dual lens)**

Fiat Ducato(2006-2020); Peugeot Box,  
Citroen Jumper

**BR-RVC07-FT(dual lens)**

(2014~current) Ford Transit

**BR-RVC07-GV(dual lens)**

Universal brake light camera  
2011/(2012 & UP) NissanNV2500,  
Nissan NV 3500

**BR-RVC07-RT(dual lens)**

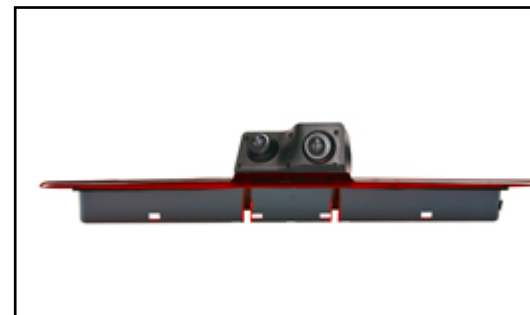
Opel Vivaro 2014 Vauxhall  
Vivaro 2014, Renault Trafic 2014

**BR-RVC07-TC(dual lens)**

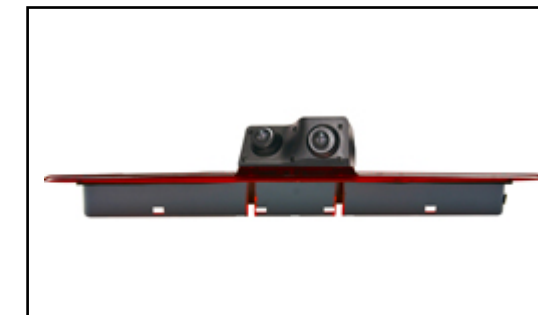
Ford Transit Custom 2015

**BR-RVC07-PP(dual lens)**

Citroën Jumpy/Peugeot Expert/  
Toyota Proace 2007 - 2016

**BR-RVC07-SC(dual lens)**

Mercedes Sprinter 314cdi 2016 & VW  
Crafter from 2006 to 2016

**BR-RVC07-SC-LED(dual lens)**

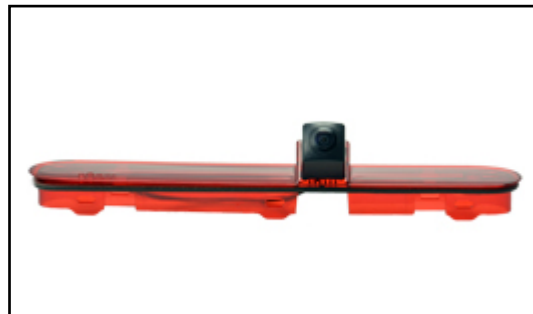
Mercedes Sprinter 314cdi 2016 & VW  
Crafter from 2006 to 2016

# OE BRAKE LIGHT CAMERA



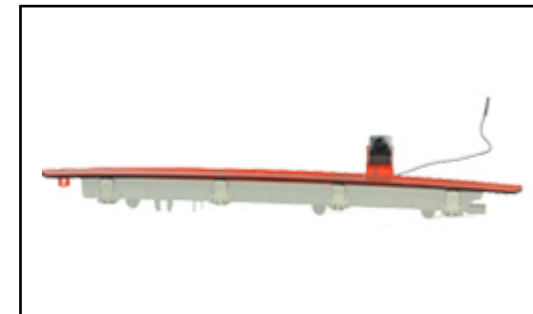
**BR-RVC29**(☀ with nozzle)

Berlingo,Partner II,Citroen Berlingo,  
Peugeot Partner 2008-2019



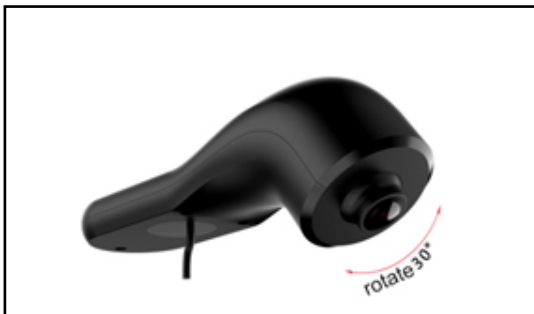
**BR-RVC07-PE**(☀ with nozzle)

2016>Peugeot Expert,  
2016>Citroen SpaceTourer  
2016>Toyota ProAce



**BR-RVC07-MV**

New Mercedes Vito 2016



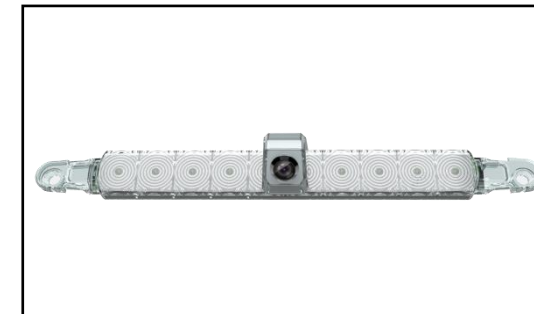
**BR-RVC22-B**

Volkswagen Crafter 2017



**BR-RVC07-SC(LED)**

Mercedes Sprinter 314cdi 2016 & VW  
Crafter from 2006 to 2016



**BR-RVC24-B**

universal brake light camera

# CAR CAMERA



BR-RVC06-S

Stainless steel housing for rugged environment,  
like holding up to salt spray

- 1/3 CCD/CMOS, 700TVL/720P/1080P, with IR
- F,O,V:180°(D) 160°(H) 93°(V)
- IP69K waterproof
- 5-28V power input



## CAR CAMERAS

**BR-MNC02**

- ☀ IP rating : IP69K
- ☀ Image Sensors :1/3"CMOS
- Resolution(TV lines) :700TVL
- Lens Angle(Deg.) :110°

**BR-MNC04**

- ☀ IP rating : IP69K
- ☀ Image Sensors :1/3"CMOS
- Resolution(TV lines) :700TVL
- F,O,V:140°(D) 110°(H) 78°(V)
- 5M RCA connector extension cable

**BR-MNC05**

- ☀ IP rating : IP69K
- ☀ Image Sensors :1/3"CMOS
- Resolution(TV lines) :700TVL
- Lens Angle(Deg.) :102°

**BR-MNC08**

- ☀ IP rating : IP69K
- ☀ Image Sensors :1/3"CMOS
- Resolution(TV lines) :700TVL
- Lens Angle(Deg.) :170°

# Part 07

## ACCESSORIES



### Applicable Models



School bus



Bus & Coach



Airport Vehicle



Farm Equipment



Fire Trucks



Forklift Truck

# NEW BRACKET



High Quality

Universal Metal Bracket for truck monitor

## Application

Front



Back



Side





# BRACKETS

We have different solution for your choices

**HOT**



**BR-BK04**

( Alluminium Alloy Bracket )

**HOT**



**BR-BK03-H**

( Alluminium Pedal Bracket )



**BR-BK03-H**

( Alluminium Small Pedal Bracket )



**BR-BK03-H**

( Alluminium Alloy Pedal Bracket )



**BR-BK05**

( Heavy Duty Bracket )



**BR-BK06**

( Heavy Duty Suction Mount Bracket )



**BR-BK07**

( Roof Mount Bracket )

**HOT**

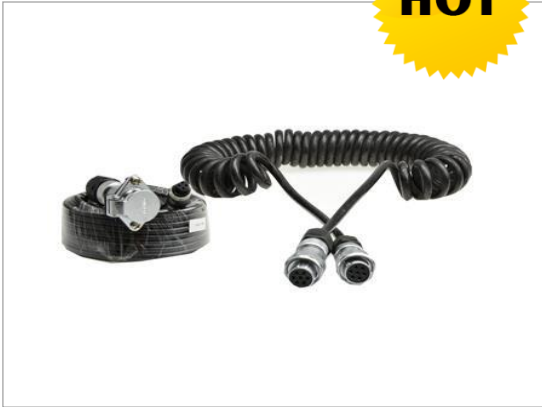


**BR-BK09**

( Window Shield Glass Bracket )

# CABLES

**HOT**



**BR-TC7P**



**BR-TC6P**  
(6Pin mini D)

**HOT**



**BR-5P**



**BR-AC04**



**BR-RCA10**



**BR-TC5P**



**BR-TC20**



**BR-NC20**



# THANKS

[www.brvision.com](http://www.brvision.com)