



ELETE

—Professional Connecting Solution—

ELETE TECHNOLOGY CO.,LTD (Dongguan factory)

Jiaoyu Road 8# Xinan Shequ
Changan Town, Dongguan City,Guangdong Province.
TEL:(86-769)81769832
Email:yuan_guo@elete-tech.com

ELETE TECHNOLOGY CO.,LTD (Jiangxi factory)

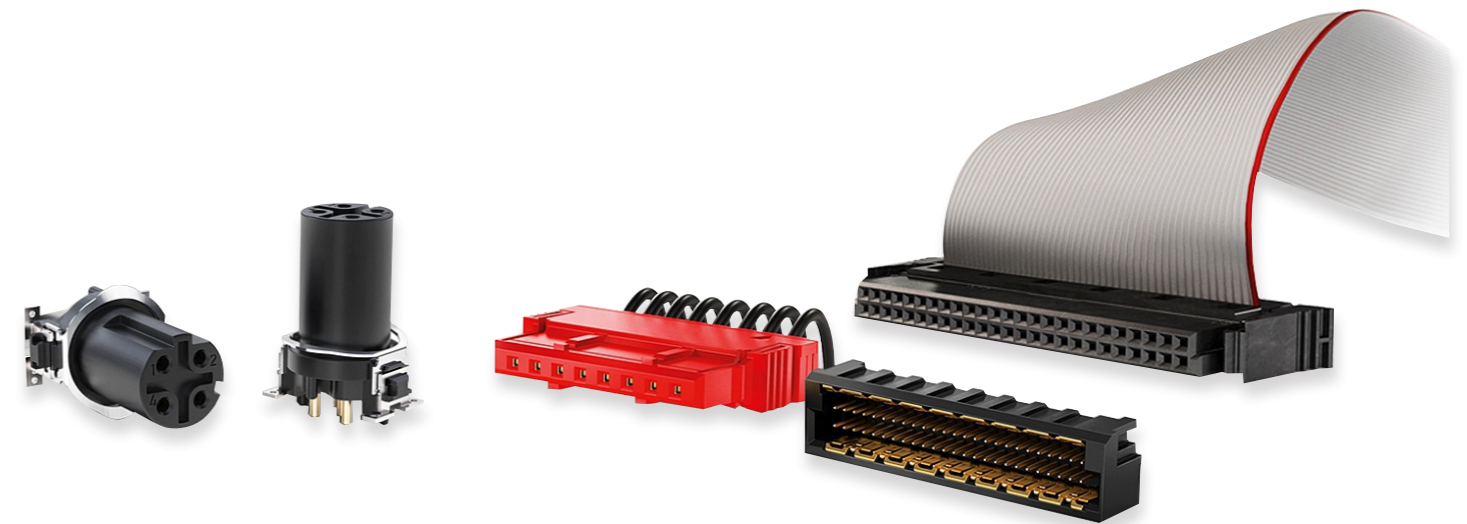
NO 82,Xiying Bridge. Longhua,Provincial Road 324
Nankang District. Ganzhou City, Jiangxi Province.
Email:Amy@elete-tech.com

ELETE TECHNOLOGY CO.,LTD (Wuhan Office)

26F, Longan Ganghui Cheng Minzu Road, Wuhan City, Hubei Province.
Tel:86-13971201976
Email:nina.xie@elete-tech.com

ELETE TECHNOLOGY CO.,LTD (Xi'anOffice)

15F, Greenland Honghai Building B, No. 2825, Keji West Road, Yanta District, Xi'an City,
Shaanxi 710086, China
Tel:13798282367
Email:yuan_guo@elete-tech.com



<http://www.elete-tech.com>

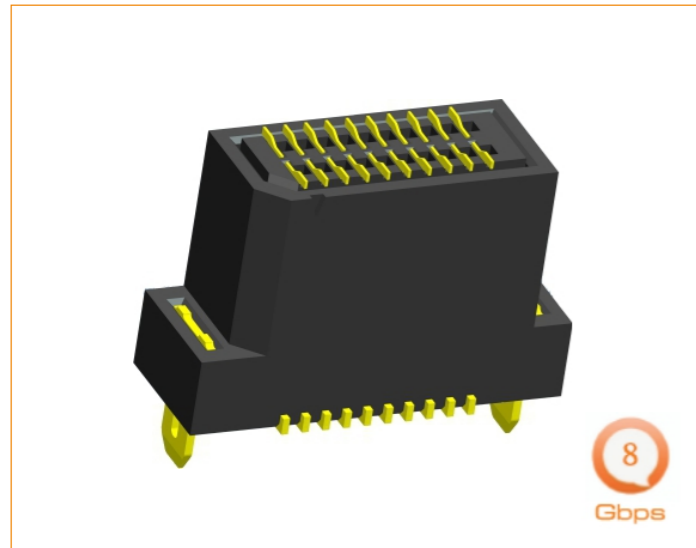
Products Industry



Contents

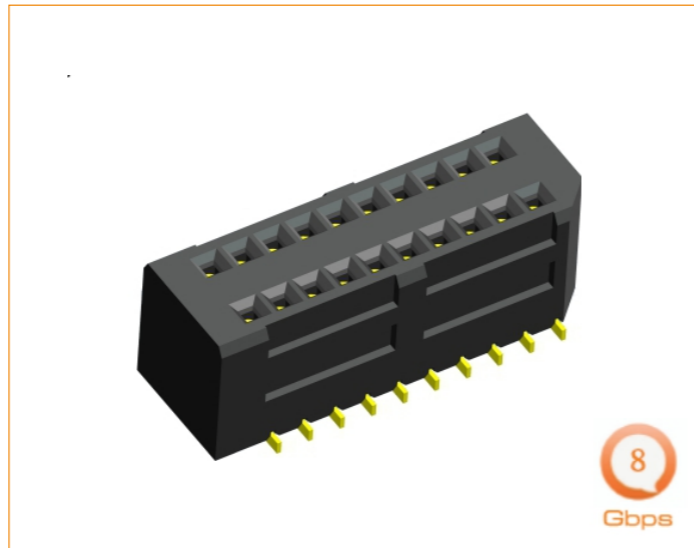


New Arrivals	01-03
M8/M12.....	04-06
Press-fit Pin/Connector.....	07-08
Terminal	09-10
Four Contacts Female Header	11
OEM/ODM	12
Board To Board Connector	13
OEM POGO Pin	14
Box Header/Ejector Header.....	15-18
Male Header/Female Header.....	19-34
Round Pin Header.....	35-36
FPC Connector.....	37-40
IDC Connector.....	41-44
D-SUB.....	45-47
Wafer/Housing/Terminal.....	48
MINI Bridge(OEM).....	49
Battery Holder.....	50-51
Cable.....	52
RF cable	53
Test Equipment	54
Factory	55



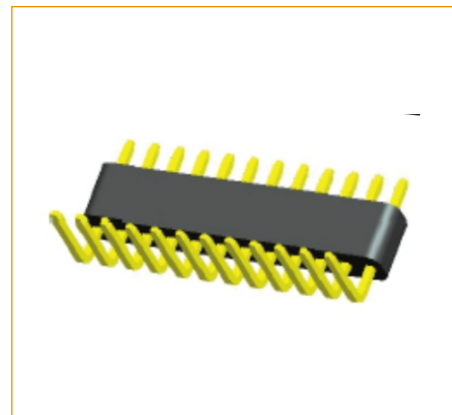
8
Gbps

0.8mm Pitch (0.031")
8GBPS High Speed Male Board to Board Connector



8
Gbps

0.8mm Pitch (0.031")
8GBPS High Speed Female Board to board Connector



1.0mm Pitch (0.039")
HMGSR22

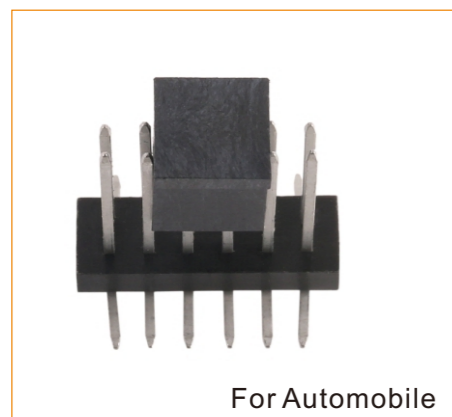


1.0mm Pitch (0.039")
HFGSP21



For Automobile

1.27mm Pitch (0.05")
CRD-DR-001



For Automobile

1.8mm Pitch (0.07")
HM2DM18



For Automobile

1.8mm Pitch (0.07")
HM2SV18

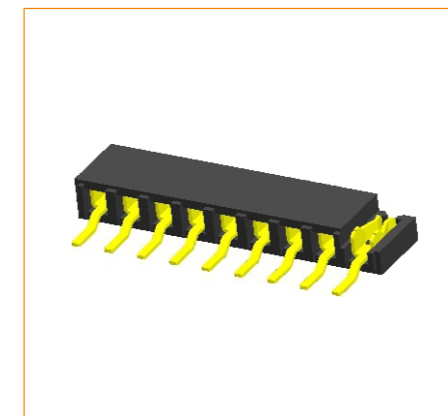


For Automobile

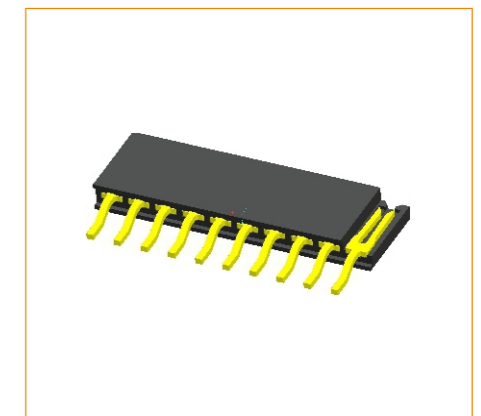
2.5mm Pitch (0.098")
HMMDM53



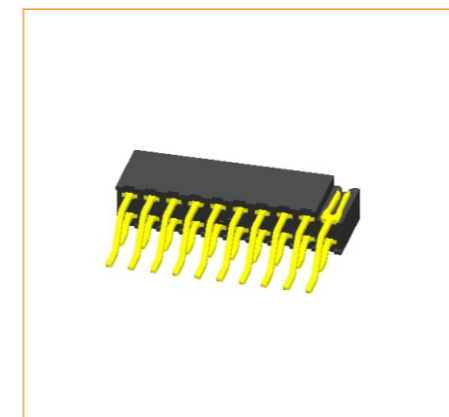
2.0mm Pitch (0.079")
HMLDP20



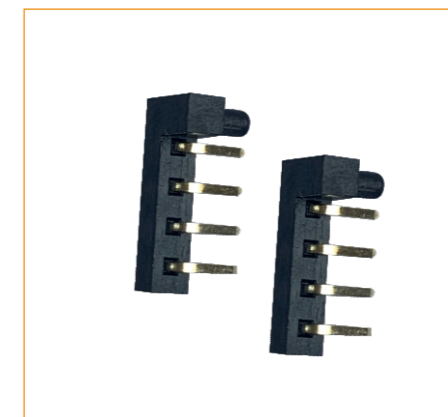
2.0mm Pitch (0.079")
HFLSP40



2.0mm Pitch (0.079")
HFLSP63



2.0mm Pitch (0.079")
HFLDP63

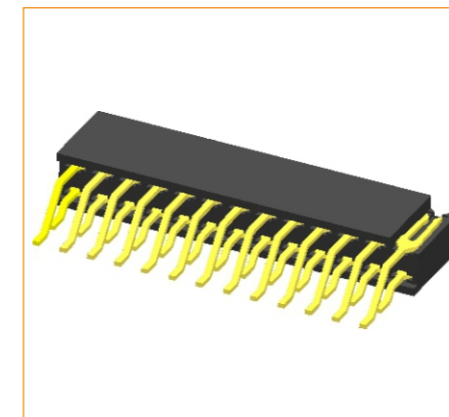


2.54mm Pitch (0.1")
HMNSR26

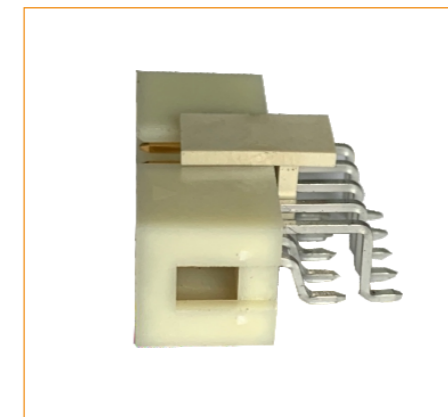


For LED

2.54mm Pitch (0.1")
HMNST20



2.54mm Pitch (0.1")
HFNDP85

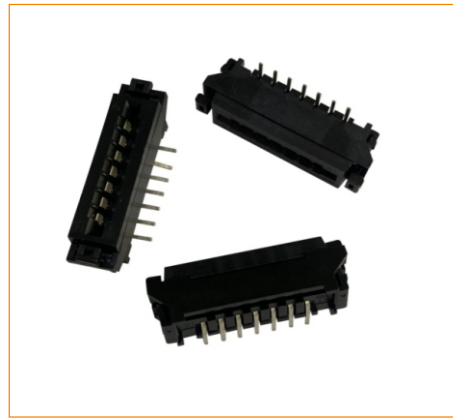


2.54mm Pitch (0.1")
BXNDP01

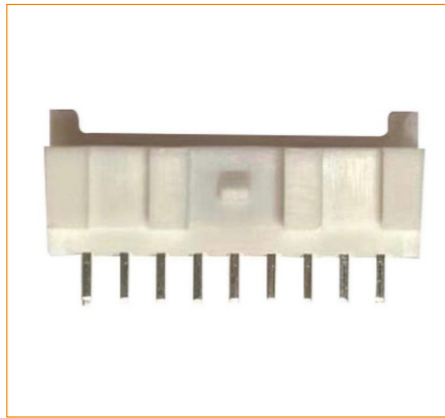


Plating: Silver

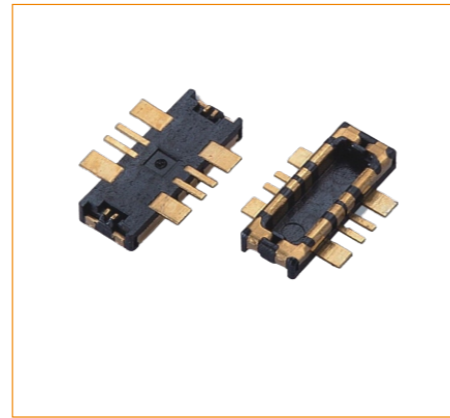
3.96mm Pitch (0.156")
HMPSP31



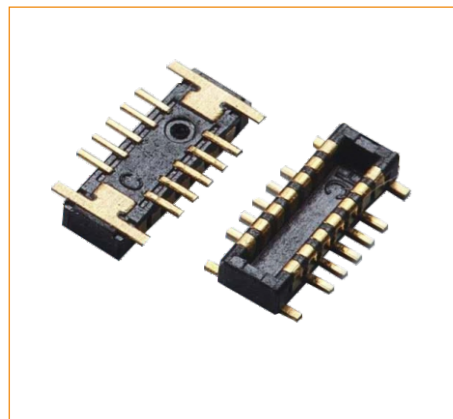
2.54mm FPC, dual contact
Alternative 90500-4007



2.0mm Wafer
Alternative 35362-0950



0.4mm pitch board to board



0.4mm pitch board to board



WHO265S-141B
Alternative 15-38-8140



2.54mm Card Edge Connector



WFZ1SS Series 5.7mm Pitch
Alternative 768290002



FCZSDD05 0.5mm Pitch
Alternative 1-1734741-9



WFLSS Series 2.0mm Pitch
Alternative B04B-PASK-1(LF)(SN)



M8 Female PCB connector
M8F0104



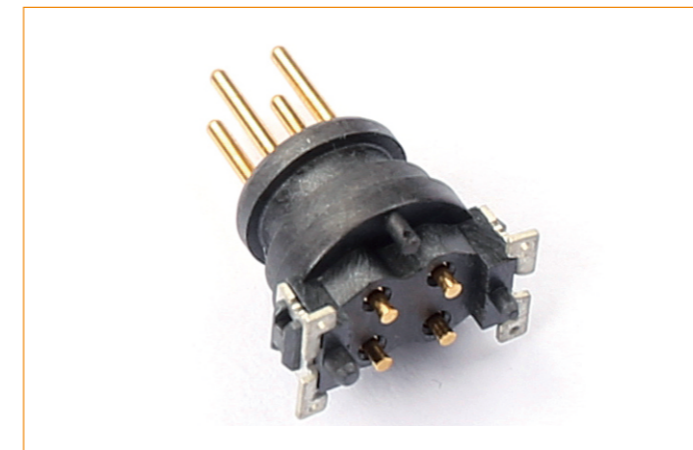
M8 Male Wire connector
M8M0104



M12 Female PCB connector
M12F0104



M12 Male Wire connector
M12M0104W



M12 Male PCB connector
M12M010401



M12 Male PCB connector
M12M0104



M12 4PIN Female PCB connector
M12F0204



M12 8PIN Female PCB connector
M12F0108



M18 5PIN male Wire connector
M18M0205



M18 8PIN male Wire connector
M18M0208



M12 5PIN Female PCB connector
M12F0105



M12 5PIN Female PCB connector
M12F0205



M12 5PIN male Wire connector
M12F0305



M12 4+1PIN Female PCB connector
M12F0305



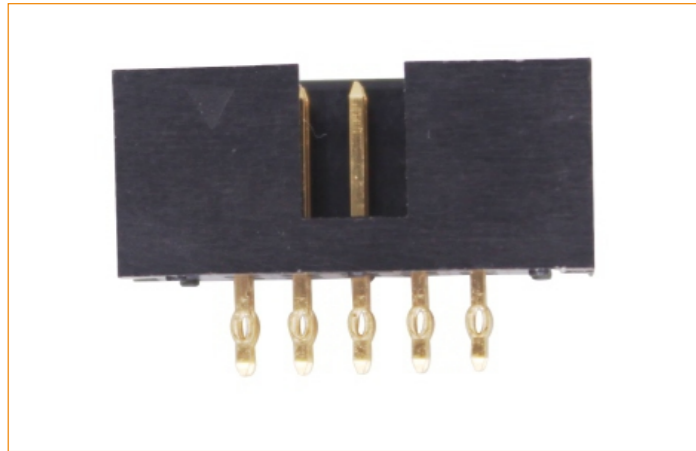
M12 4+1PIN male PCB connector
M12F0305



M12 4PIN male angled connector
M12M0104R



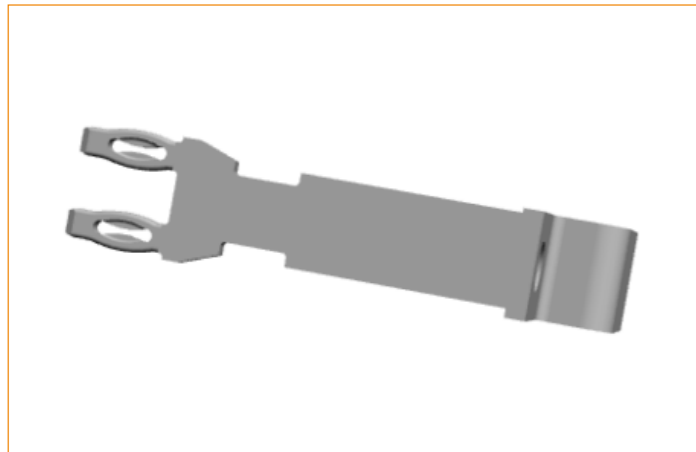
M12 8PIN female angled connector
M12M0108R



Pitch 2.54mm(0.1")
BXNDS01-T006



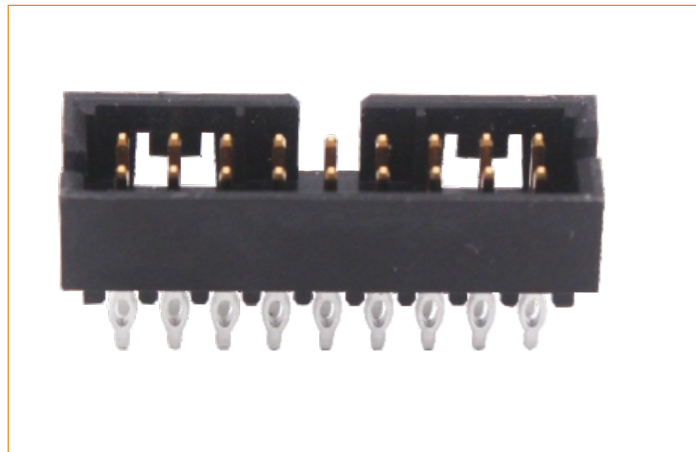
Pitch 2.54mm(0.1")
HMNDP-A001



OEM Press-fit



Press-fit Series



Pitch 2.0mm(0.079")
BXLDS05-A001



OEM Press-fit



OEM Press-fit Pin



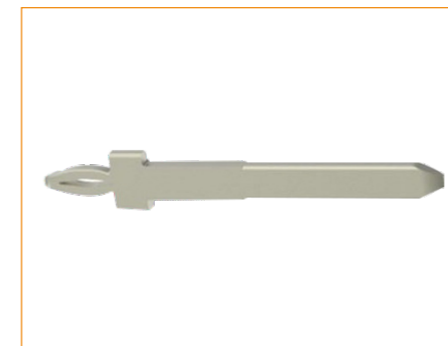
EL5044-015TT



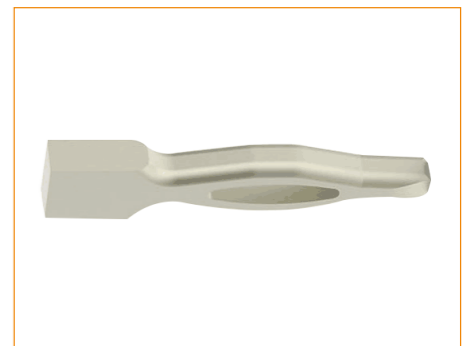
EL5057-004AA



EL5030-025TT



EL5068-001ST



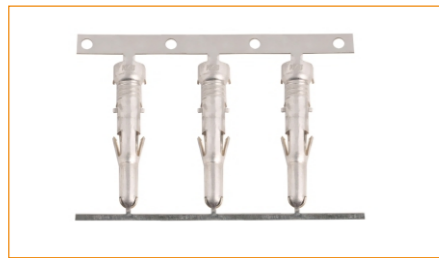
EL4029-003TT



Male crimp terminal
Alternative 02-09-2134



Female Crimp Terminal
Alternative 02-09-1134



TFX103-001XXX-T
Alternative 42824-4002



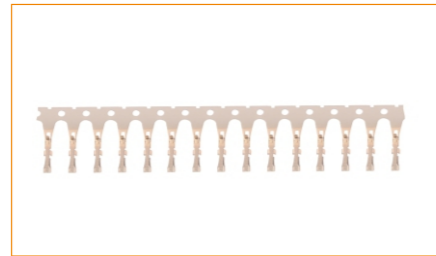
TMX105-001XXX-T
Press-fit terminal



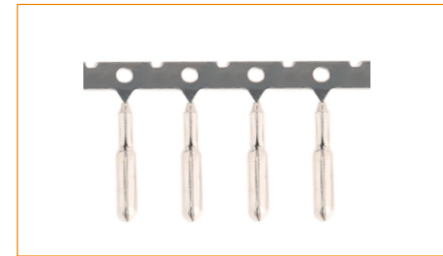
TMX106-001XXX-T
Press-fit terminal



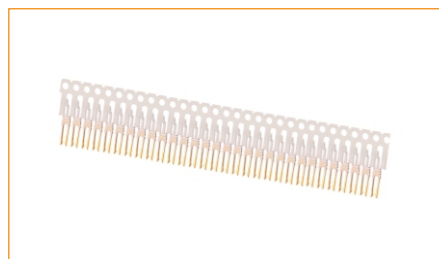
TFN122-00151X-T



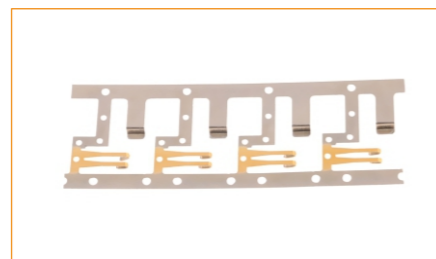
TFN123-00151X-T



TMX107-00101X-T



TFN124-00151X-T



TFN125-00151X-T



TMX108-00101X-T



TXZ102-001XXX-T



TXZ103-001XXX-T



TXZ104-001XXX-T



TXZ105-001XXX-T



TXZ106-001XXX-T



TXZ107-001XXX-T



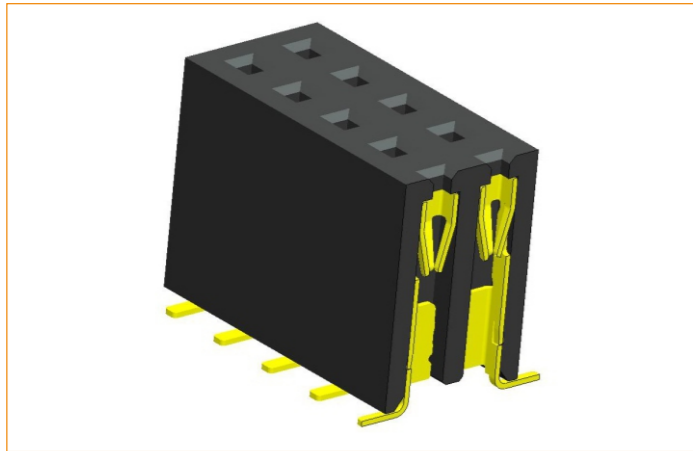
TXZ108-001XXX-T



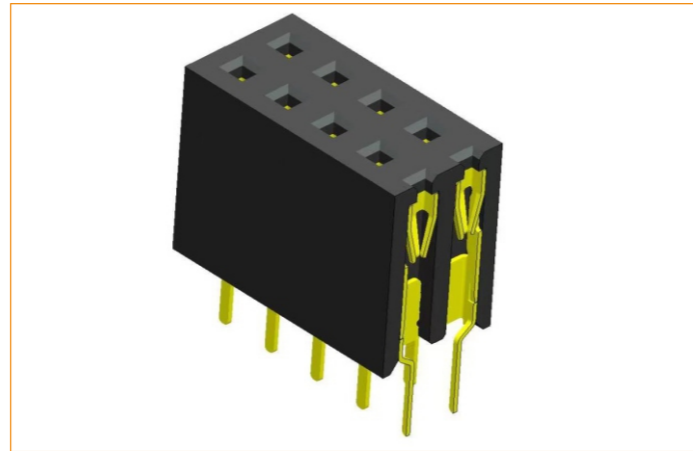
TXZ109-001XXX-T



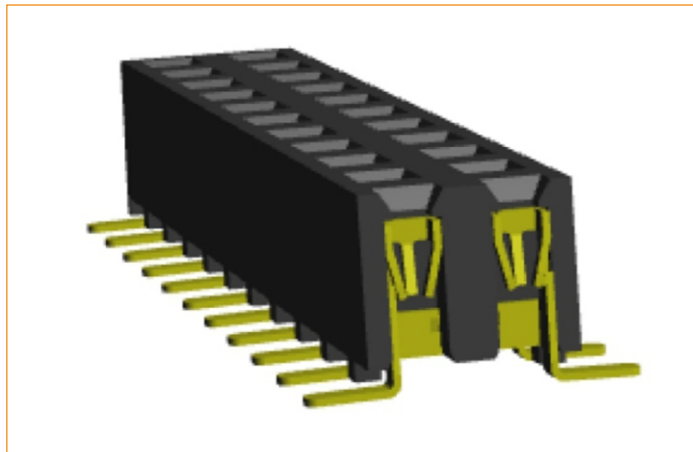
TXZ110-001XXX-T



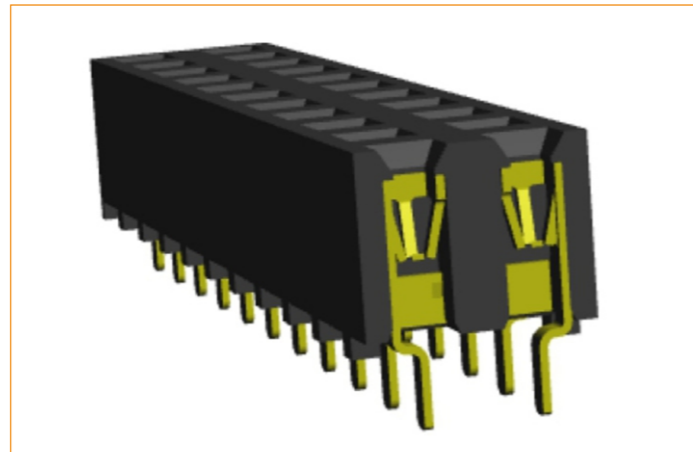
Pitch 2.54mm (0.1")
HFNDM85/HFNDM55/HFNDM11
Plastic height:5.5mm/8.5mm/11mm



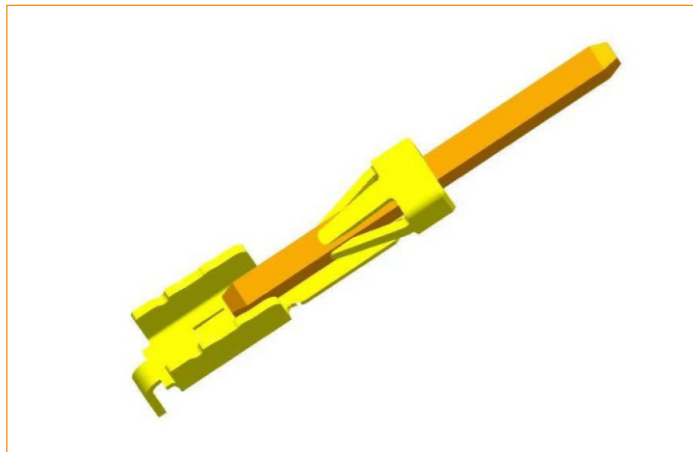
Pitch 2.54mm (0.1")
HFNDS85/HFNDS55/HFNDS11
Plastic height:5.5mm/8.5mm/11mm



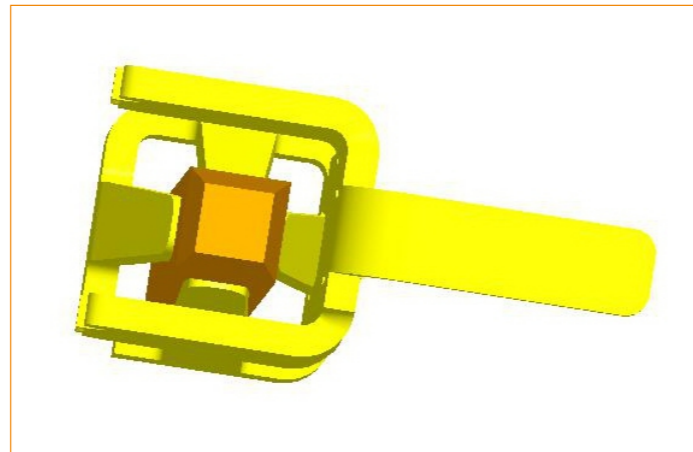
Pitch 2.0mm (0.079")
HFLDM35/HFLDM43
Plastic height:3.5mm/4.3mm



Pitch 2.0mm (0.079")
HFLDM35/HFLDM43
Plastic height:3.5mm/4.3mm



Terminal Structure



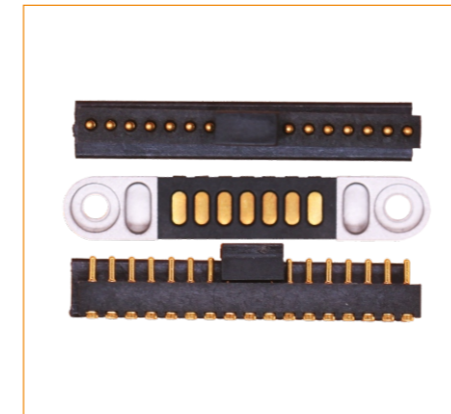
Terminal Structure



Large Current PCB Card



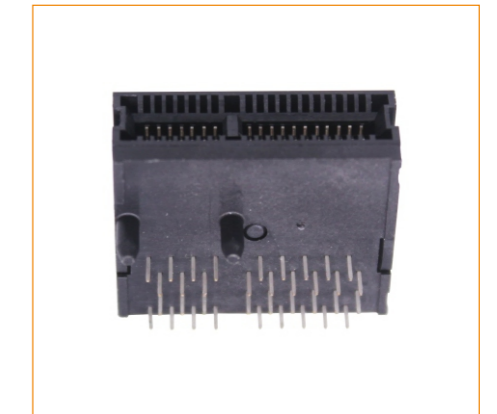
SCSI Connector



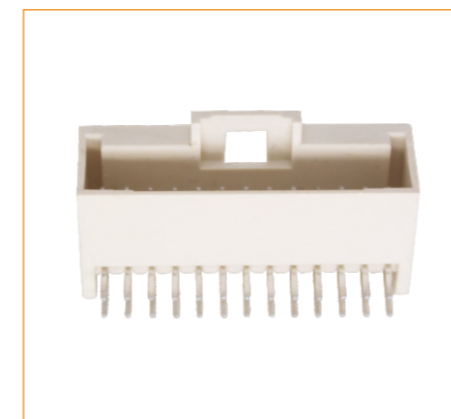
Large Current High Speed Connector



Waterproof Connector



PCI EXPRESS Connector



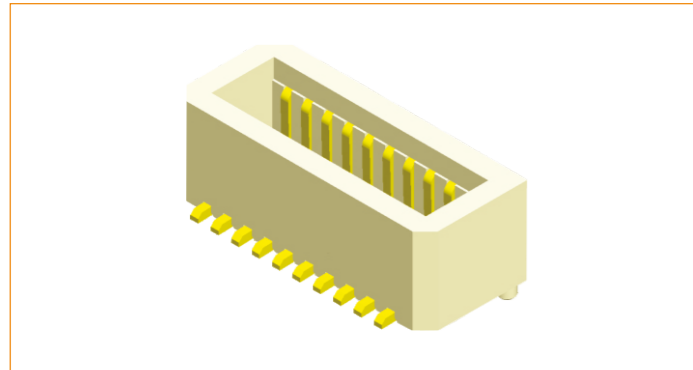
2.0MM Pitch Wafer



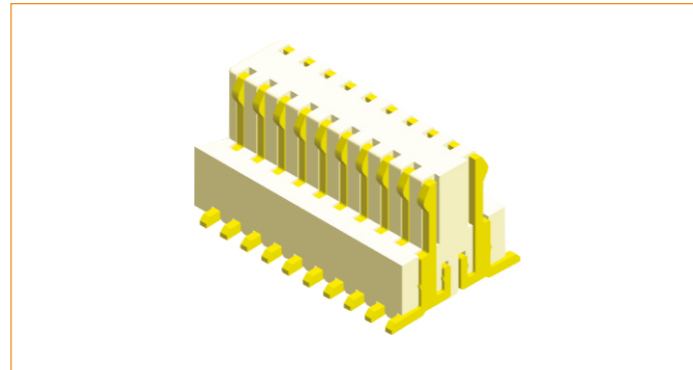
Automobile Connector



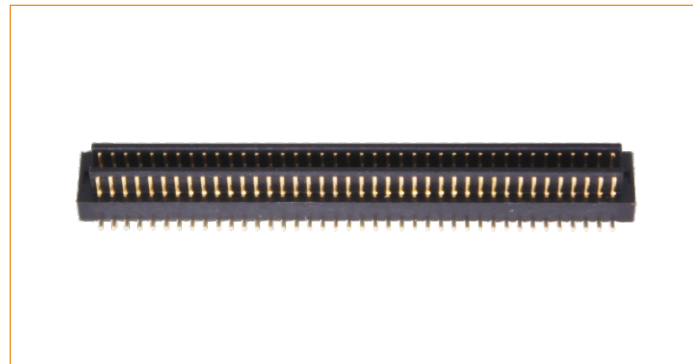
Pc104 Box Header



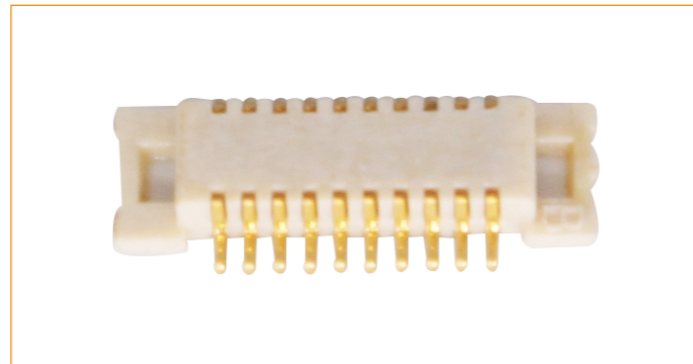
Pitch 0.8mm(0.031")
BFESV1 Series
H=4.0/4.5/5.0/5.5/6.0/6.5/7.0mm
(0.157"/0.177"/0.197"/0.217"/0.236"/0.256"/0.276")



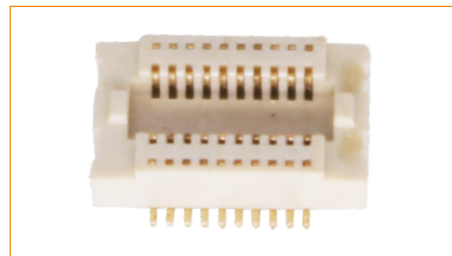
Pitch 0.8mm(0.031")
BMESV1 Series
H=4.0/4.5/5.0/5.5/6.0/6.5/7.0mm
(0.157"/0.177"/0.197"/0.217"/0.236"/0.256"/0.276")



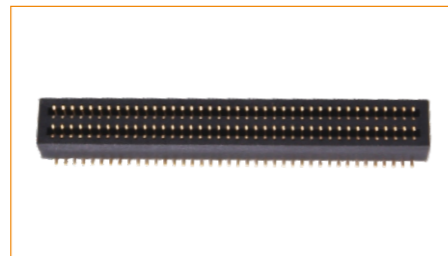
Pitch 0.5x1.0mm(0.02"x0.039")
BMDSVX01



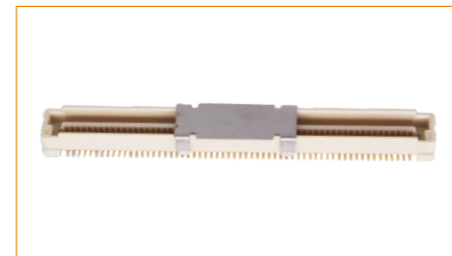
Pitch 0.5x1.5mm(0.02"x0.059")
BMDSVX02



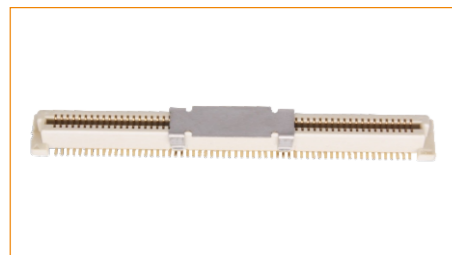
Pitch 0.5x2.5mm(0.02"x0.098")
BFDSVX02



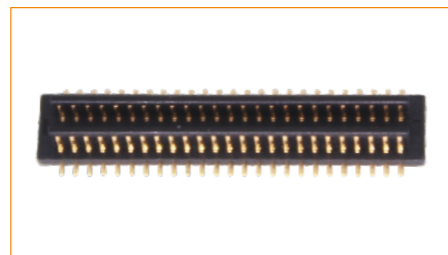
Pitch 0.5x3.0mm(0.02"x0.118")
BFDSVX01



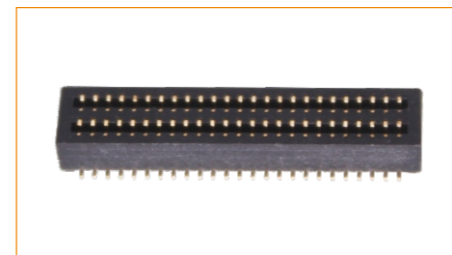
Pitch 0.8mm(0.031")
BMESV2



Pitch 0.8mm(0.031")
BFESV2



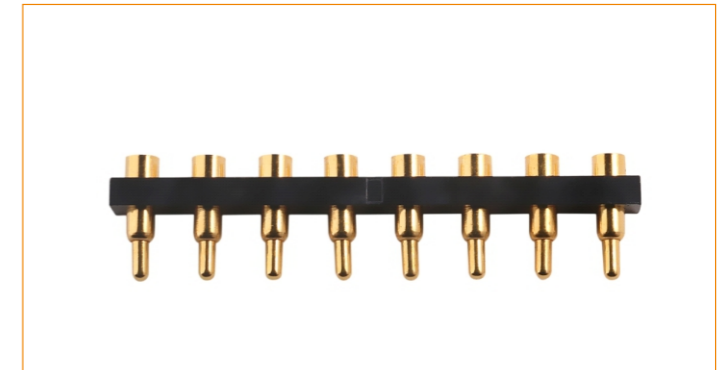
Pitch 0.8x1.0mm(0.031"x0.039")
BMESV3



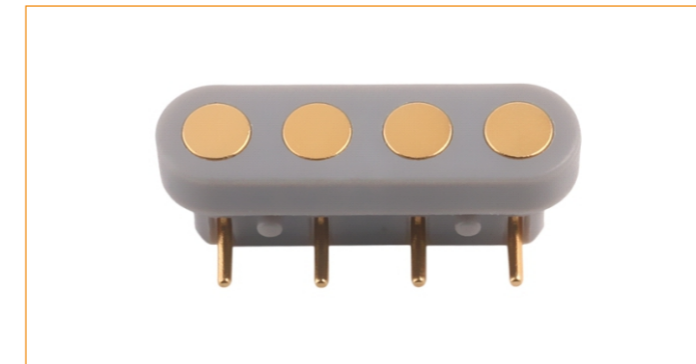
Pitch 0.8x3.0mm(0.031"x0.118")
BFESV3



EL1751-7P



EL1508-8P



EL2130-4P



EL1738-5P



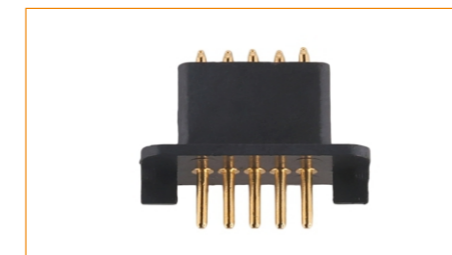
ELPG2657



EL1856-2P



EL2175-4P



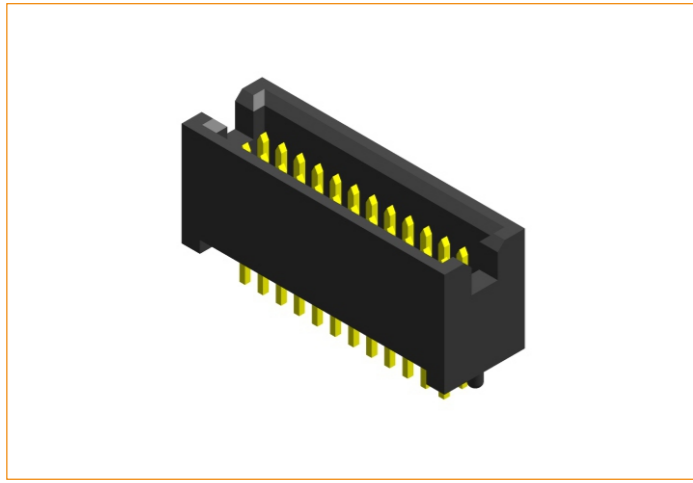
EL1738-5P



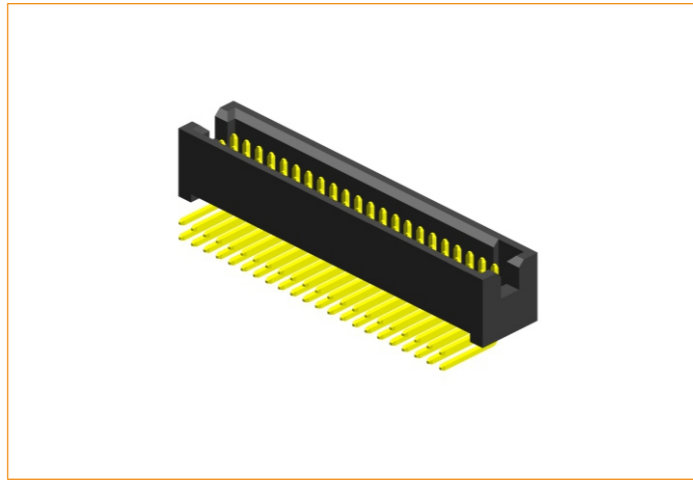
EL2888-1P



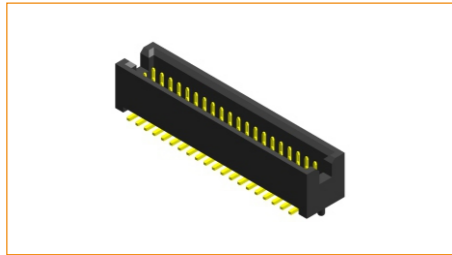
EL2144-2P



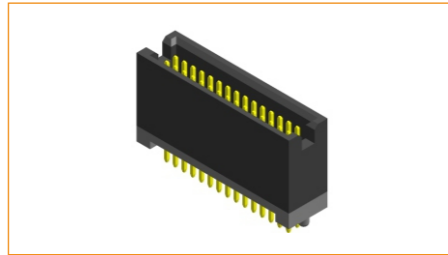
Pitch 1.27mm(0.05")
BXIDS01-Series



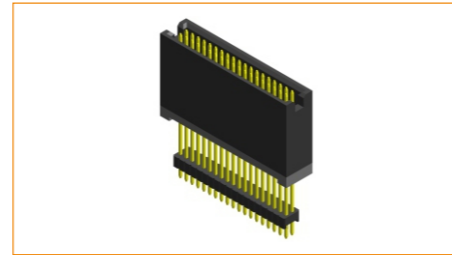
Pitch 1.27mm(0.05")
BXIDR01-Series



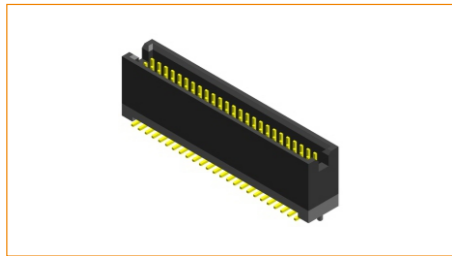
Pitch 1.27mm(0.05")
BXIDM01-Series



Pitch 1.27mm(0.05")
BXIDS11-Series



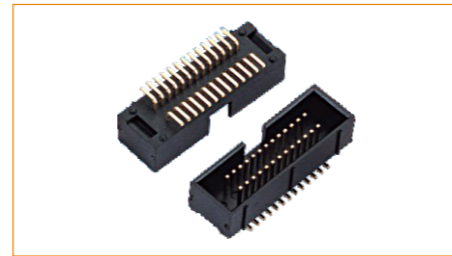
Pitch 1.27mm(0.05")
BXIDSH-Series



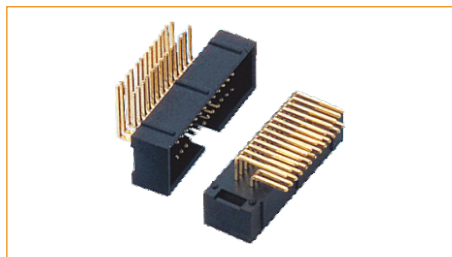
Pitch 1.27mm(0.05")
BXIDM11-17 Series



Pitch 1.27x2.54mm(0.05"x0.1")
BXJDS02-Series



Pitch 1.27x2.54mm(0.05"x0.1")
BXJDM02-Series



Pitch 1.27x2.54mm(0.05"x0.1")
BXJDR02-Series



Pitch 1.27mm(0.05")
BXIDS03-Series



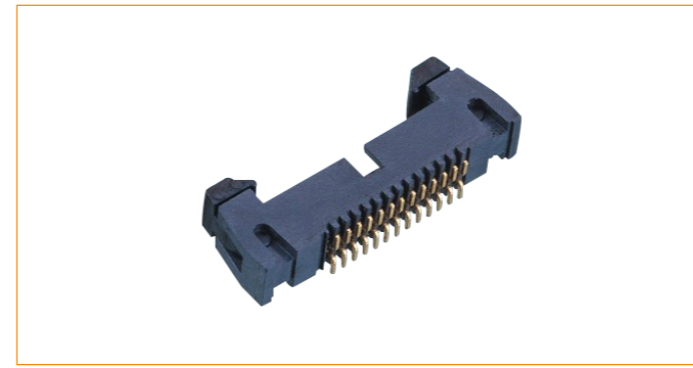
Pitch 1.27mm(0.05")
BXIDM03-Series



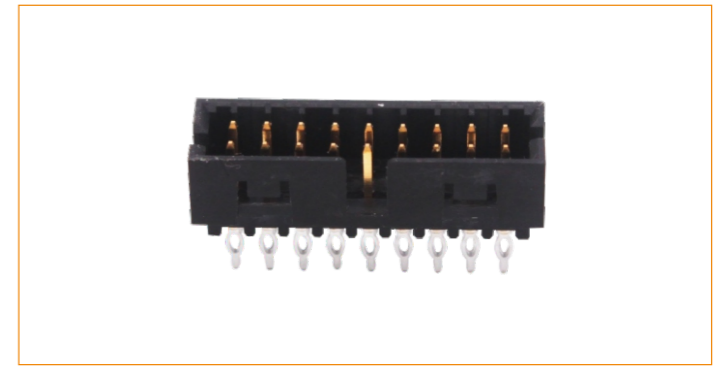
Pitch 1.27mm(0.05")
EJIDS01-Series



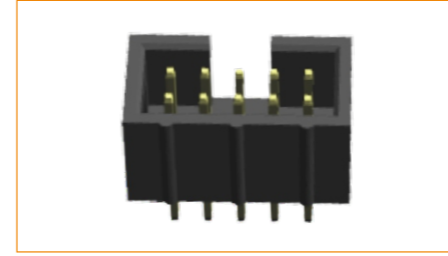
Pitch 1.27mm(0.05")
EJIDR01-Series



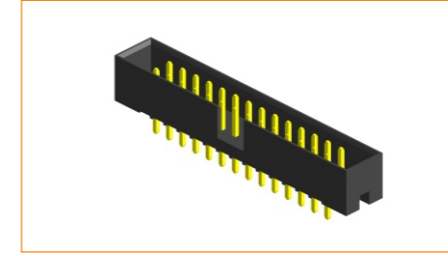
Pitch 1.27mm(0.05")
EJIDM01-Series



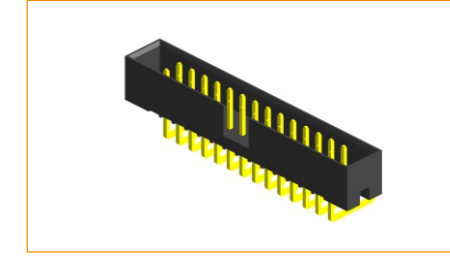
Pitch 2.0mm(0.079")
BXLDS05-Series



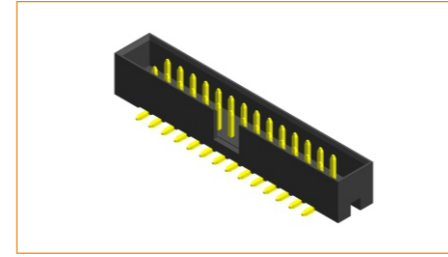
Pitch 2.0mm(0.079")
BXLDS04-Series



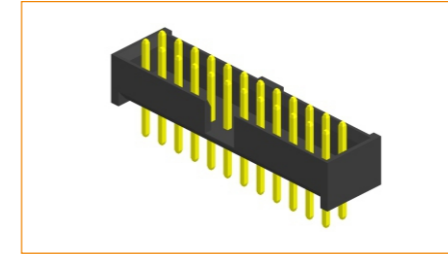
Pitch 2.0mm(0.079")
BXLDS01-Series



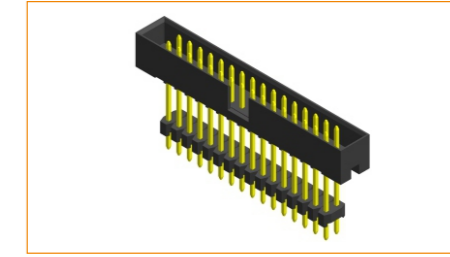
Pitch 2.0mm(0.079")
BXLDR01-Series



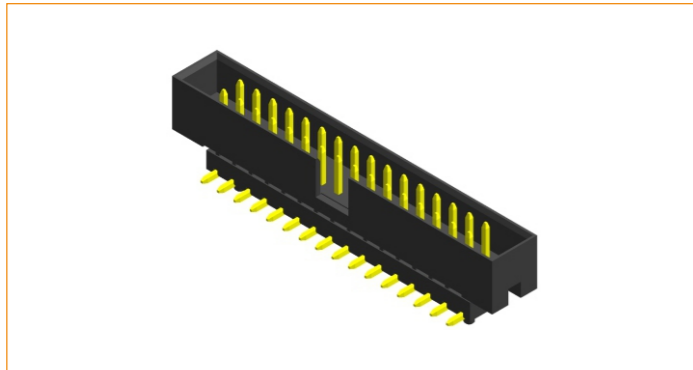
Pitch 2.0mm(0.079")
BXLDM01-Series



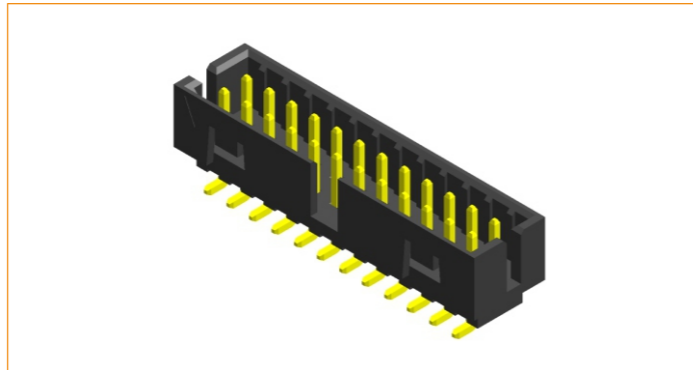
Pitch 2.0mm(0.079")
BXLDS02-Series



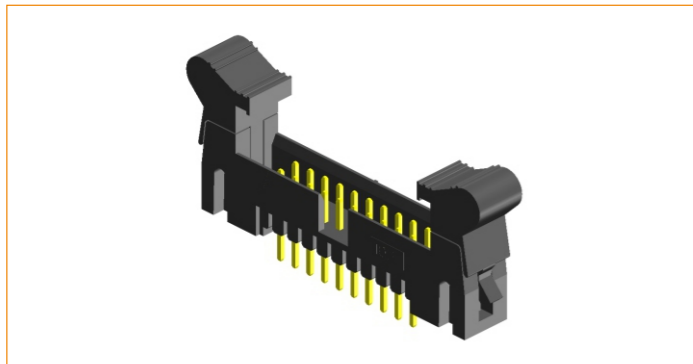
Pitch 2.0mm(0.079")
BXLDSH01-Series



Pitch 2.0mm(0.079")
BXLDMH01-P001 Series



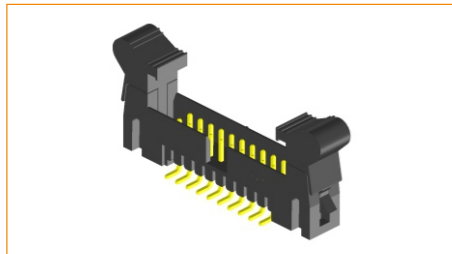
Pitch 2.0mm(0.079")
BXLDM03-Series



Pitch 2.0mm(0.079")
EJLDS01-Series



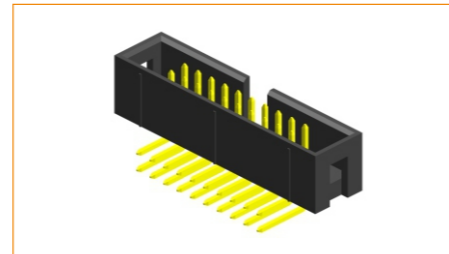
Pitch 2.0mm(0.079")
EJLDR01-Series



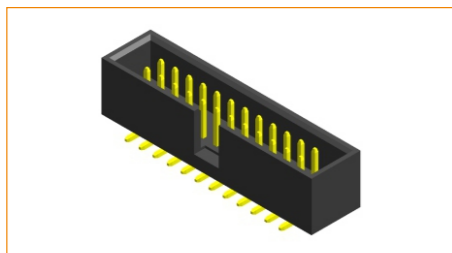
Pitch 2.0mm(0.079")
EJLDM01-Series



Pitch 2.54mm(0.1")
BXNS01-Series



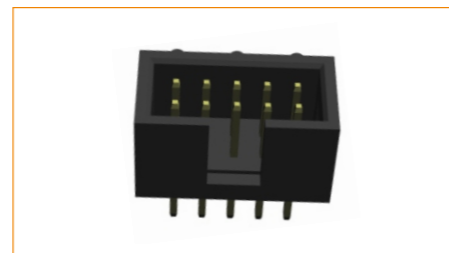
Pitch 2.54mm(0.1")
BXNDR01-Series



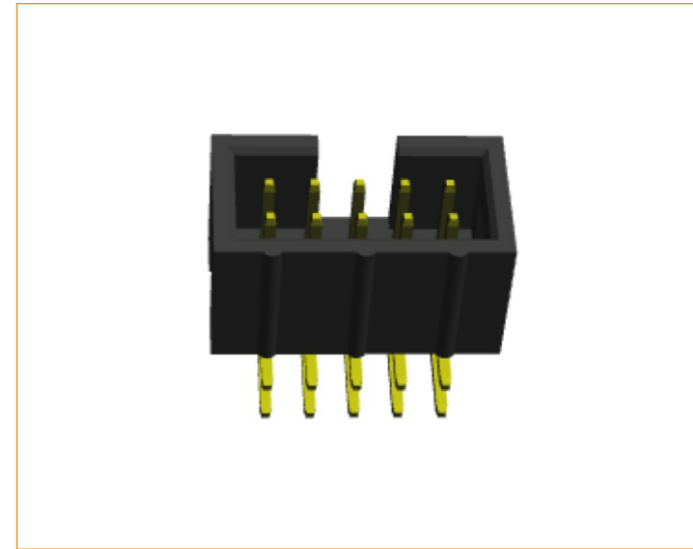
Pitch 2.54mm(0.1")
BXNDM01-Series



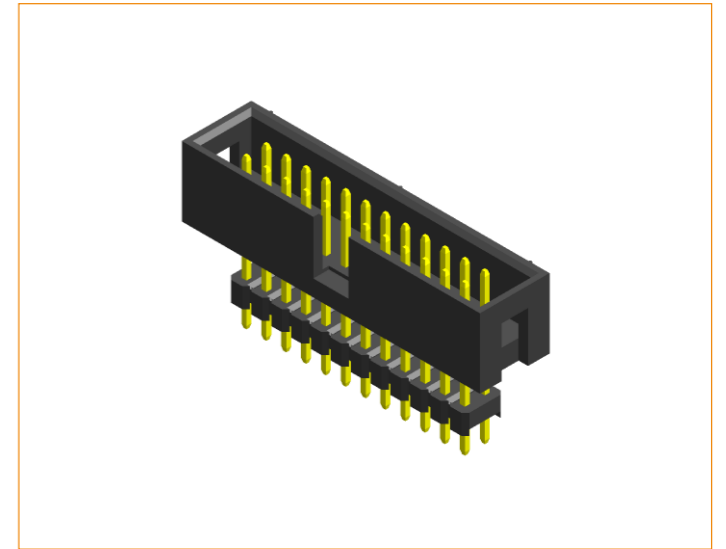
Pitch 2.54mm(0.1")
BXNS01-T006 Series



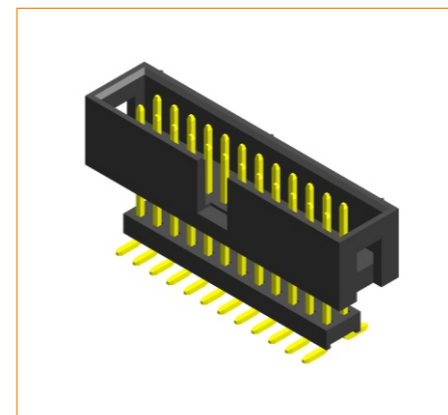
Pitch 2.54mm(0.1")
BXNS02-Series



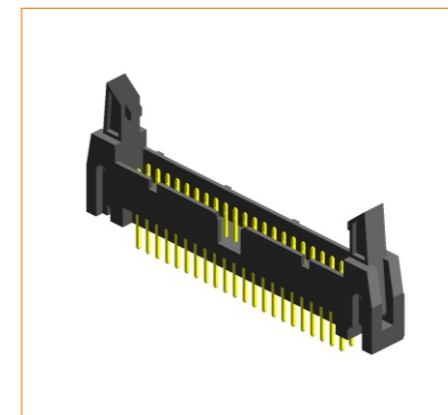
Pitch 2.54mm(0.1")
BXNDR02-Series



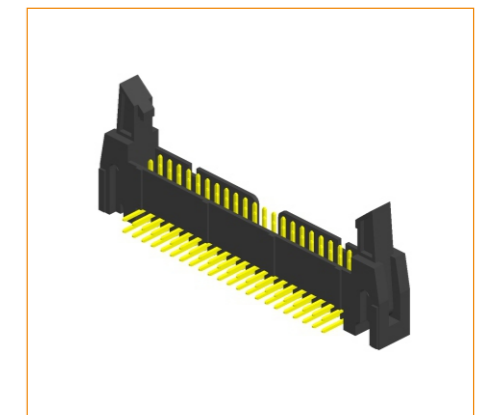
Pitch 2.54mm(0.1")
BXNSH01-Series



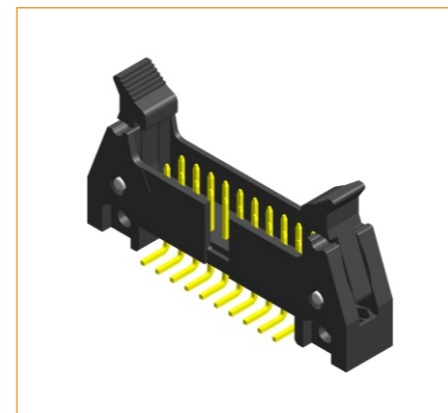
Pitch 2.54mm(0.1")
BXNDMH01-Series



Pitch 2.54mm(0.1")
EJNS01-Series



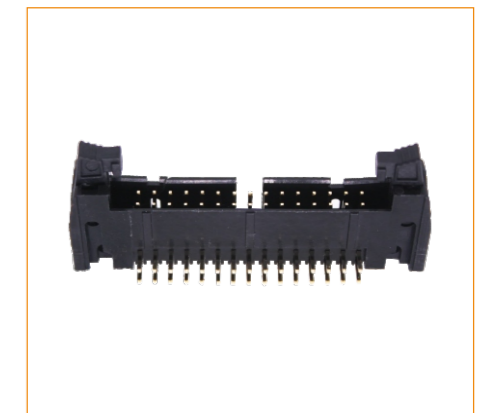
Pitch 2.54mm(0.1")
EJNDR01-Series



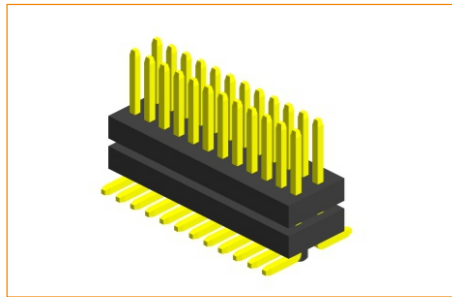
Pitch 2.54mm(0.1")
EJNDM01-Series



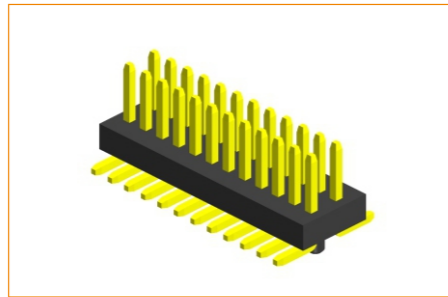
Pitch 2.54mm(0.1")
EJNS01-A003 Series



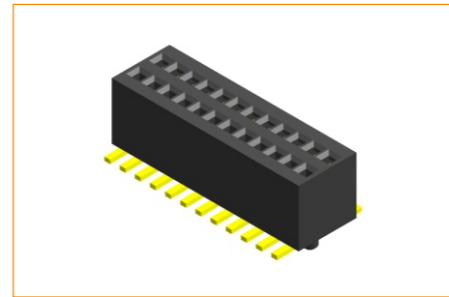
Pitch 2.54mm(0.1")
EJNDR01-A004 Series



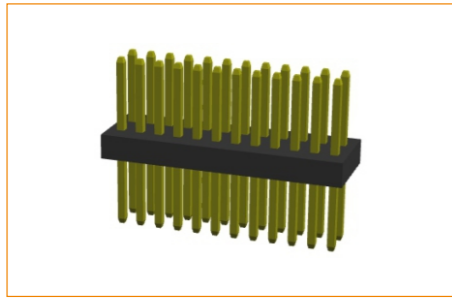
Pitch 0.8mm(0.031")
HMFDMH10-Series
H=1.0mm(0.039")



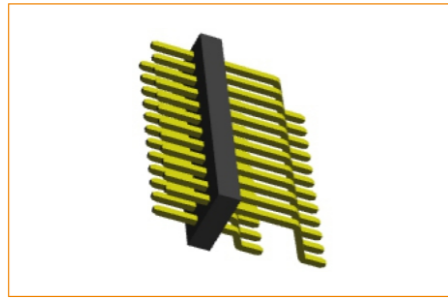
Pitch 0.8mm(0.031")
HMFDM10-Series
H=1.0mm(0.039")



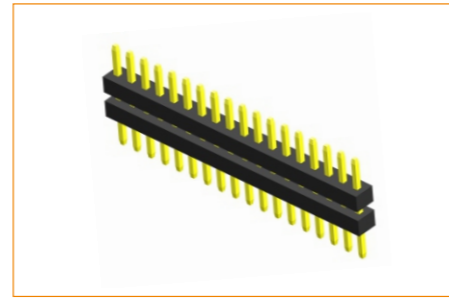
Pitch 0.8mm(0.031")
HFFDM30-Series
H=3.0mm(0.118")



Pitch 0.8mm(0.031")
HMFDS10-Series
H=1.0mm(0.039")

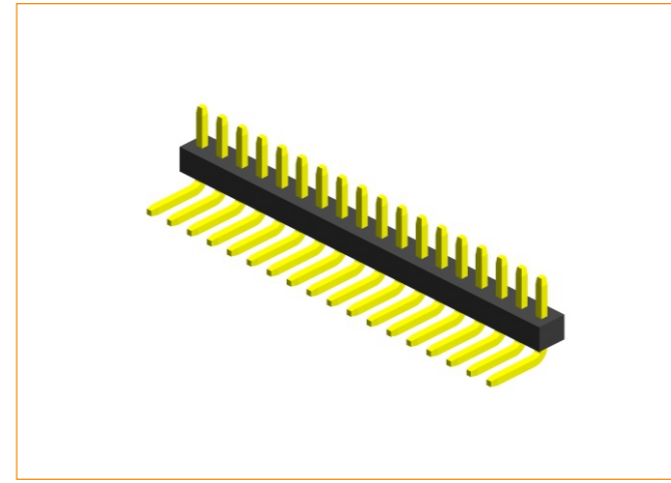


Pitch 0.8mm(0.031")
HMFDP13-Series
H=1.3mm(0.051")

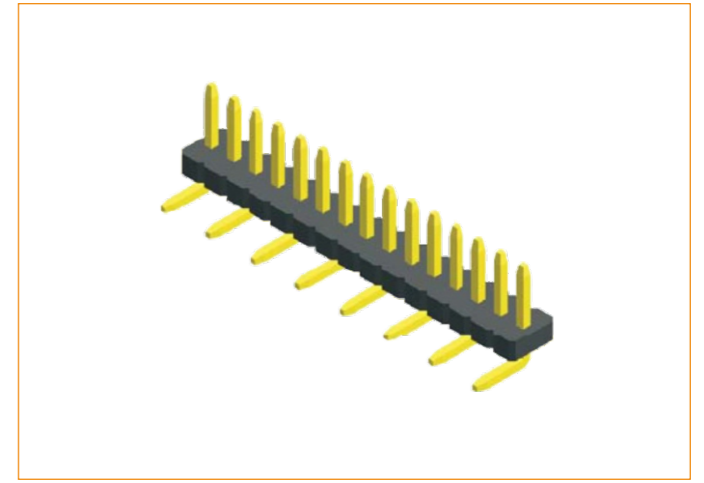


Pitch 1.0mm(0.039")
HMGSSH10/HMGSSH15
H=1.0/1.5mm(0.039"/0.059")

Pitch 0.8mm(0.031")
&
Pitch 1.0mm(0.039")



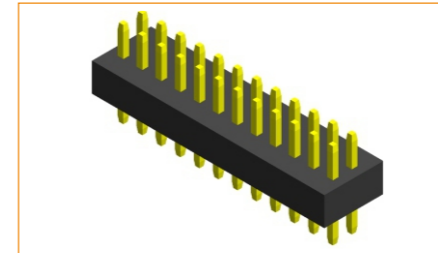
Pitch 1.0mm(0.039")
HMGSR10/HMGSR15
H=1.0/1.5mm(0.039"/0.059")



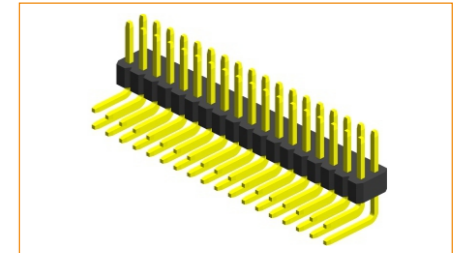
Pitch 1.0mm(0.039")
HMGSV10
H=1.0mm(0.039")



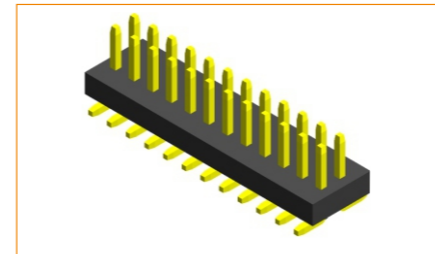
Pitch 1.0mm(0.039")
HMGSP15
H=1.5mm(0.059")



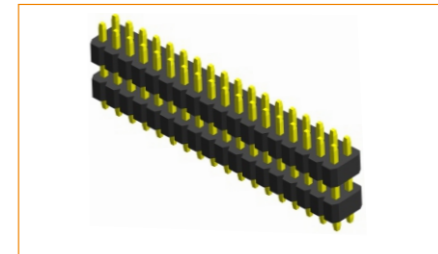
Pitch 1.0mm(0.039")
HMGDS10/HMGDS15
H=1.0/1.5mm(0.039"/0.059")



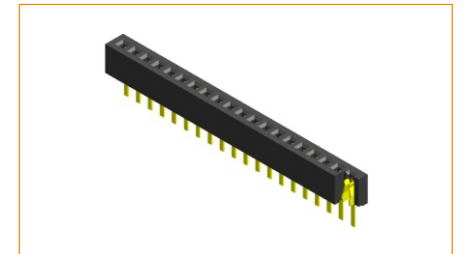
Pitch 1.0mm(0.039")
HMGDR10/HMGDR15
H=1.0/1.5mm(0.039"/0.059")



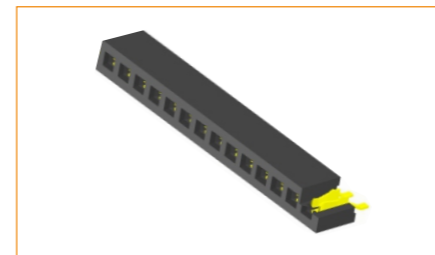
Pitch 1.0mm(0.039")
HMGDM10/HMGDM15
H=1.0/1.5mm(0.039"/0.059")



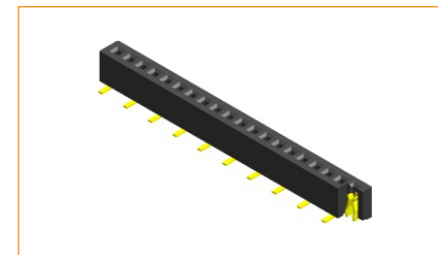
Pitch 1.0mm(0.039")
HMGDSH10/HMGDSH15
H=1.0/1.5mm(0.039"/0.059")



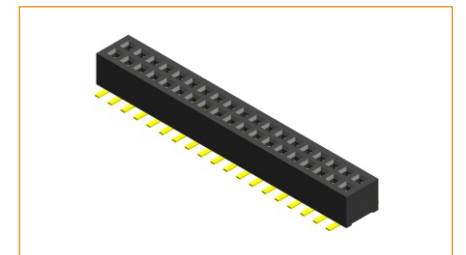
Pitch 1.0mm(0.039")
HFGSS20
H=2.0mm(0.079")



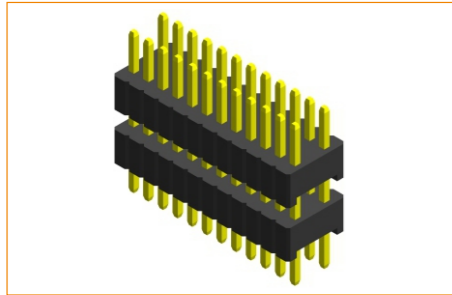
Pitch 1.0mm(0.039")
HFGSP35
H=3.5mm(0.138")



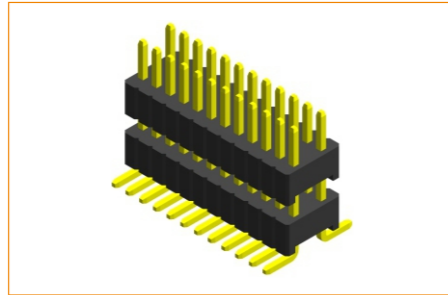
Pitch 1.0mm(0.039")
HFGSVB20
H=2.0mm(0.079")



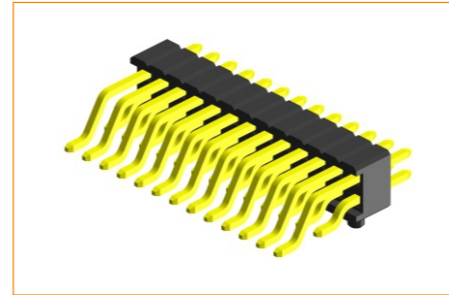
Pitch 1.0mm(0.039")
HFGDM20
H=2.0mm(0.079")



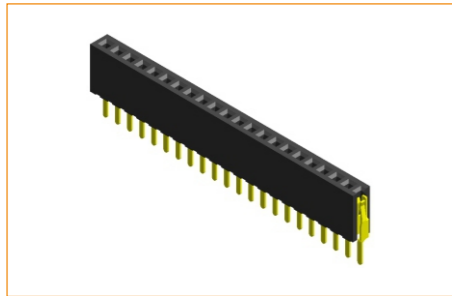
Pitch 1.27x2.54mm(0.05"x0.1") SQ:0.46
HMJDSH17/HMJDSH25
H=1.7/2.5mm(0.067"/0.098")



Pitch 1.27x2.54mm(0.05"x0.1") SQ:0.46
HMJDMH17/HMJDMH25
H=1.7/2.5mm(0.067"/0.098")



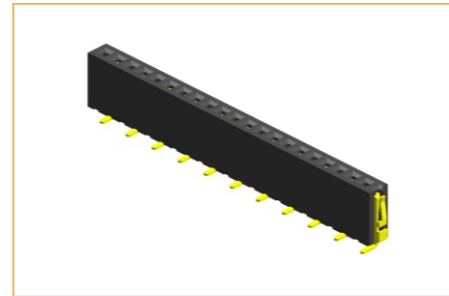
Pitch 1.27x1.27mm(0.05"x0.05")
HMIDP10/HMIDP15/HMIDP17/HMIDP20/HMIDP25
H=1.0/1.5/1.7/2.0/2.5mm
(0.039"/0.059"/0.067"/0.079"/0.098")



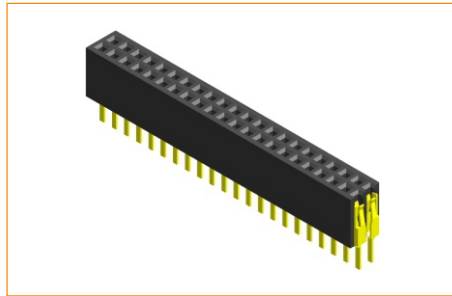
Pitch 1.27mm(0.05")
HFISS20/HFISS34/HFISS43
H=2.0/3.4/4.3mm(0.079"/0.134"/0.169")



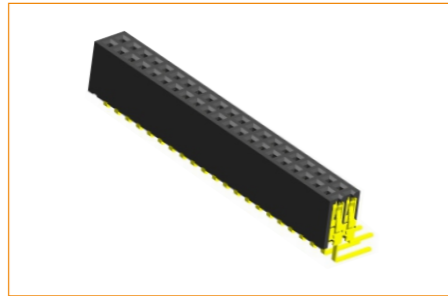
Pitch 1.27mm(0.05")
HFISR20/HFISR34/HFISR43
H=2.0/3.4/4.3mm(0.079"/0.134"/0.169")



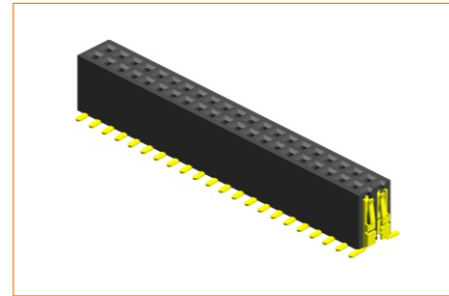
Pitch 1.27mm(0.05")
HFISV20/HFISV34/HFISV43
H=2.0/3.4/4.3mm(0.079"/0.134"/0.169")



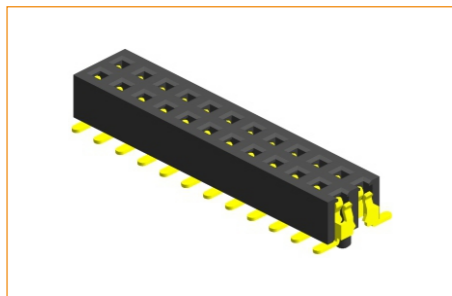
Pitch 1.27mm(0.05")
HFIDS34/HFIDS44
H=3.4/4.4mm(0.134"/0.173")



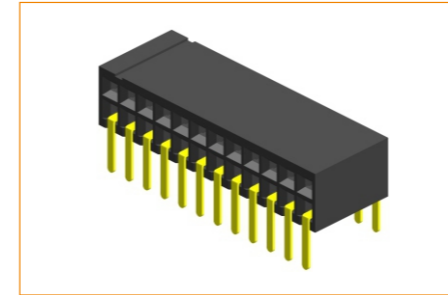
Pitch 1.27mm(0.05")
HFIDR44
H=4.4mm(0.173")



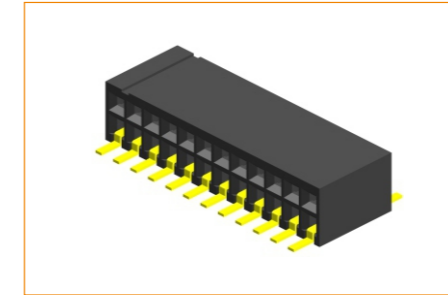
Pitch 1.27mm(0.05")
HFIDM34/HFIDM44
H=3.4/4.4mm(0.134"/0.173")



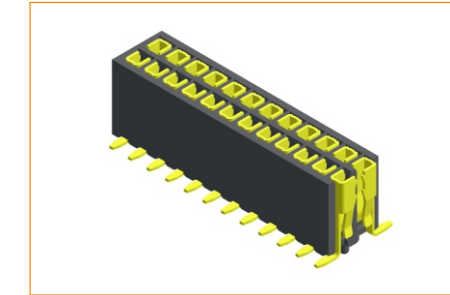
Pitch 1.27mm(0.05")
HFIDM20
H=2.0mm(0.079")



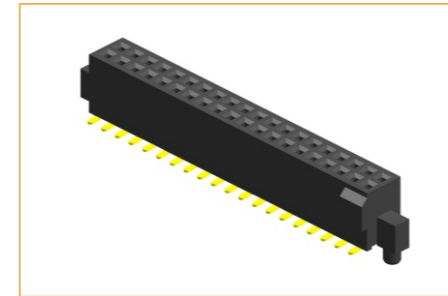
Pitch 1.27mm(0.05")
HFIDR52
H=5.2mm(0.205")



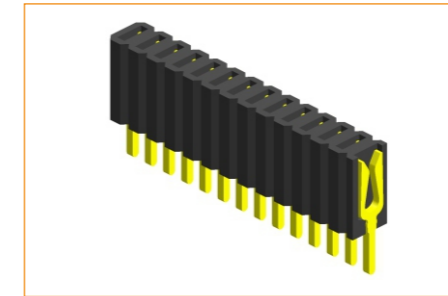
Pitch 1.27mm(0.05")
HFIDM52
H=5.2mm(0.205")



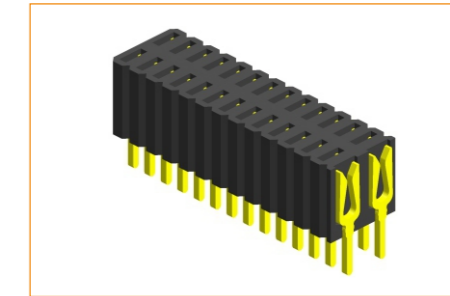
Pitch 1.27mm(0.05")
HFIDM44-T050
H=4.4mm(0.173")



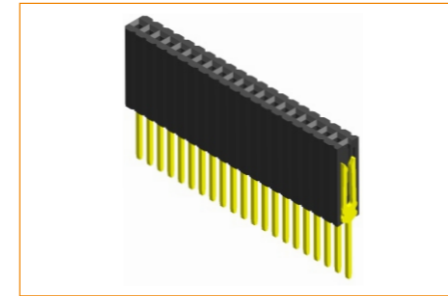
Pitch 1.27mm(0.05")
HFIDM44-P048
H=4.4mm(0.173")



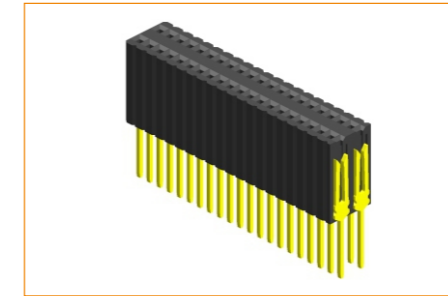
Pitch 1.27mm(0.05")
HFJSS46
H=4.6mm(0.181")



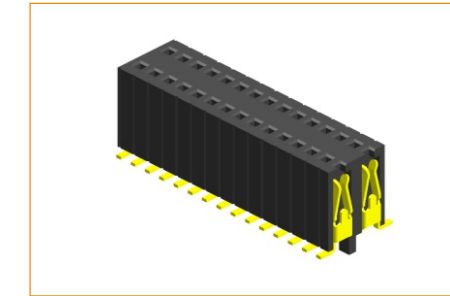
Pitch 1.27x2.54mm(0.05"x0.1")
HFJDS46
H=4.6mm(0.181")



Pitch 1.27mm(0.05")
HFJSS85
H=8.5mm(0.335")

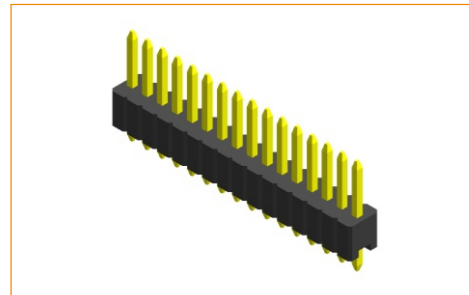


Pitch 1.27x2.54mm(0.05"x0.1")
HFJDS85
H=8.5mm(0.335")

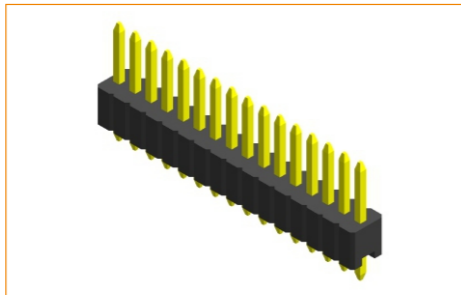


Pitch 1.27x2.54mm(0.05"x0.1")
HFJDM45/HFJDM57
H=4.5/5.7mm

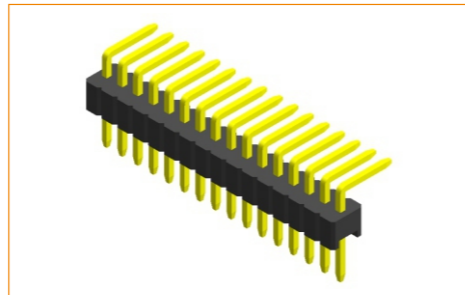
Pitch 1.27mm(0.05")



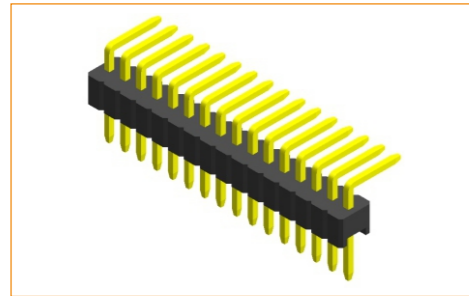
Pitch 1.27mm(0.05") SQ:0.46
HMJSS17/HMJSS25
H=1.7/2.5mm(0.067"/0.098")



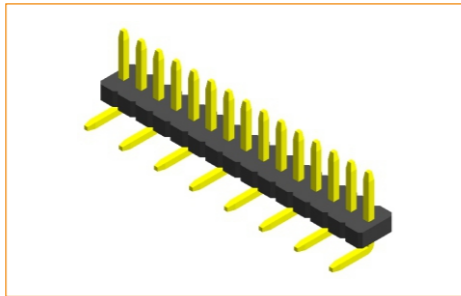
Pitch 1.27mm(0.05")
HMISS10/HMISS15/HMISS17/HMISS20/HMISS25
H=1.0/1.5/1.7/2.0/2.5mm
(0.039"/0.059"/0.067"/0.079"/0.098")



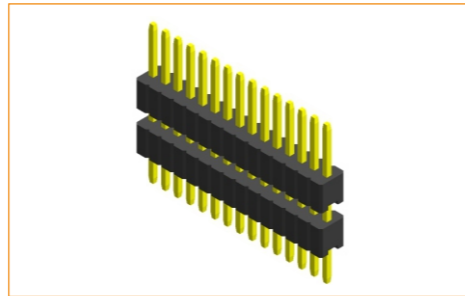
Pitch 1.27mm(0.05") SQ:0.46
HMJSR17/HMJSR25
H=1.7/2.5mm(0.067"/0.098")



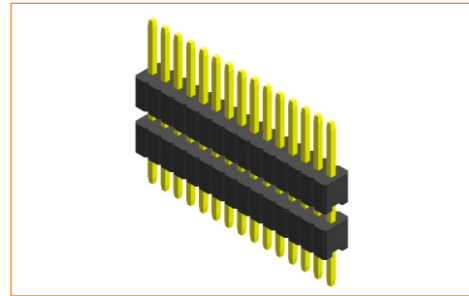
Pitch 1.27mm(0.05")
HMISR10/HMISR15/HMISR17/HMISR20/HMISR25
H=1.0/1.5/1.7/2.0/2.5mm
(0.039"/0.059"/0.067"/0.079"/0.098")



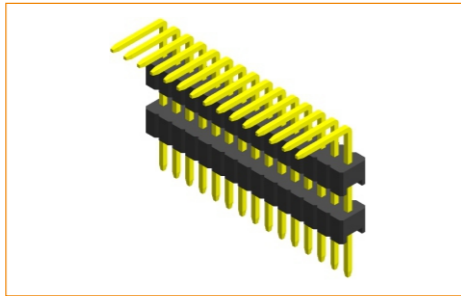
Pitch 1.27mm(0.05")
HMISN10/HMISN15/HMISN17/HMISN20/HMISN25
H=1.0/1.5/1.7/2.0/2.5mm
(0.039"/0.059"/0.067"/0.079"/0.098")



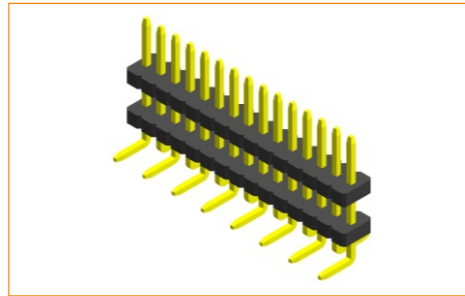
Pitch 1.27mm(0.05") SQ:0.46
HMJSSH17/HMJSSH25
H=1.7/2.5mm(0.067"/0.098")



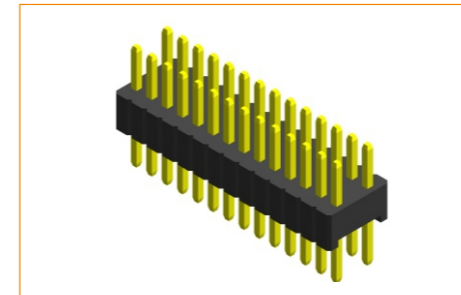
Pitch 1.27mm(0.05")
HMISSH10/HMISSH15/HMISSH17/HMISSH20/HMISSH25
H=1.0/1.5/1.7/2.0/2.5mm
(0.039"/0.059"/0.067"/0.079"/0.098")



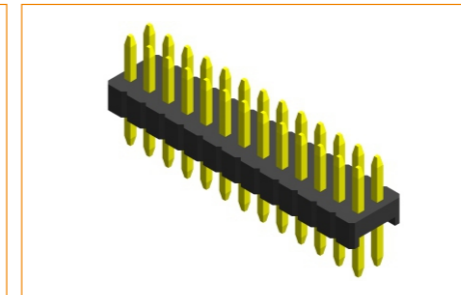
Pitch 1.27mm(0.05")
HMISRH10/HMISRH15/HMISRH17/HMISRH20/HMISRH25
H=1.0/1.5/1.7/2.0/2.5mm
(0.039"/0.059"/0.067"/0.079"/0.098")



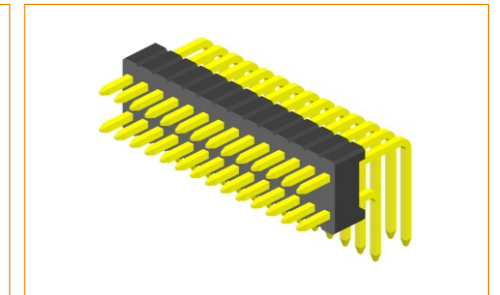
Pitch 1.27mm(0.05")
HMISVH10/HMISVH15/HMISVH17/HMISVH20/HMISVH25
H=1.0/1.5/1.7/2.0/2.5mm
(0.039"/0.059"/0.067"/0.079"/0.098")



Pitch 1.27x2.54mm(0.05"x0.1") SQ:0.46
HMJDS17/HMJDS25
H=1.7/2.5mm(0.067"/0.098")



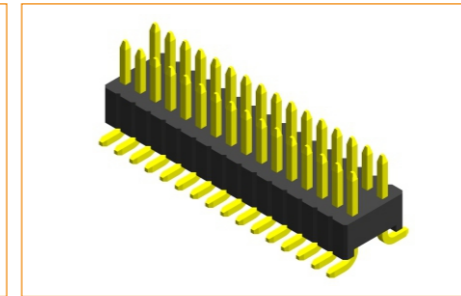
Pitch 1.27x1.27mm(0.05"x0.05")
HMIDS10/HMIDS15/HMIDS17/HMIDS20/HMIDS25
H=1.0/1.5/1.7/2.0/2.5mm
(0.039"/0.059"/0.067"/0.079"/0.098")



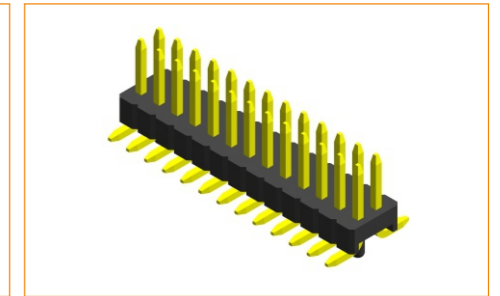
Pitch 1.27x2.54mm(0.05"x0.1") SQ:0.46
HMJDR17/HMJDR25
H=1.7/2.5mm(0.067"/0.098")



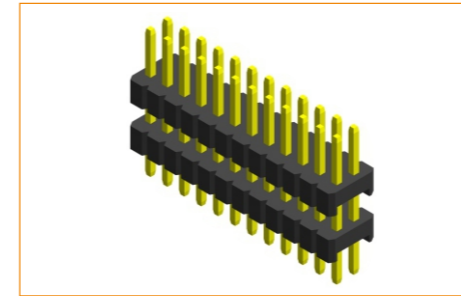
Pitch 1.27x1.27mm(0.05"x0.05")
HMIDR10/HMIDR15/HMIDR17/HMIDR20/HMIDR25
H=1.0/1.5/1.7/2.0/2.5mm
(0.039"/0.059"/0.067"/0.079"/0.098")



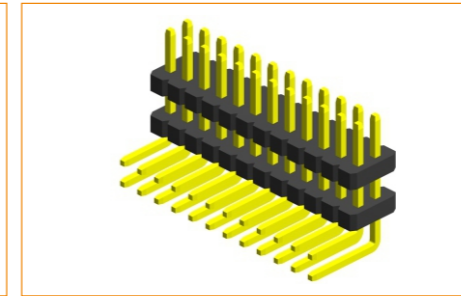
Pitch 1.27x2.54mm(0.05"x0.1") SQ:0.46
HMJDM17/HMJDM25
H=1.7/2.5mm(0.067"/0.098")



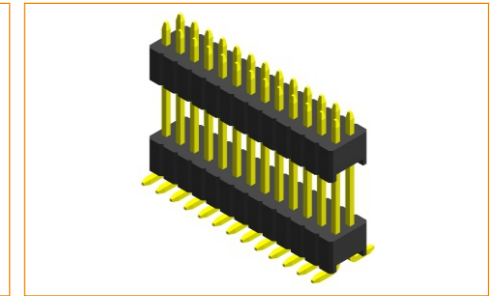
Pitch 1.27x1.27mm(0.05"x0.05")
HMIDM10/HMIDM15/HMIDM17/HMIDM20/HMIDM25
H=1.0/1.5/1.7/2.0/2.5mm
(0.039"/0.059"/0.067"/0.079"/0.098")



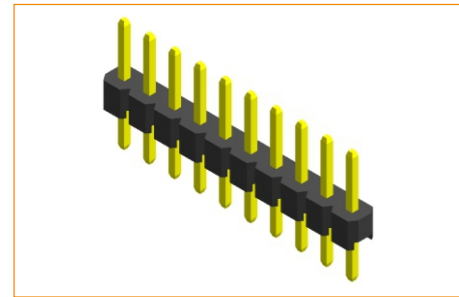
Pitch 1.27x1.27mm(0.05"x0.05")
HMIDSH10/HMIDSH15/HMIDSH17/HMIDSH20/HMIDSH25
H=1.0/1.5/1.7/2.0/2.5mm
(0.039"/0.059"/0.067"/0.079"/0.098")



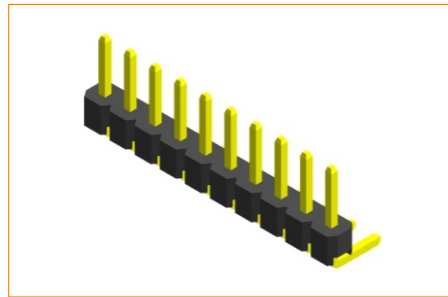
Pitch 1.27x1.27mm(0.05"x0.05")
HMIDRH10/HMIDRH15/HMIDRH17/HMIDRH20/HMIDRH25
H=1.0/1.5/1.7/2.0/2.5mm
(0.039"/0.059"/0.067"/0.079"/0.098")



Pitch 1.27x1.27mm(0.05"x0.05")
HMIDMH10/HMIDMH15/HMIDMH17/HMIDMH20/HMIDMH25
H=1.0/1.5/1.7/2.0/2.5mm
(0.039"/0.059"/0.067"/0.079"/0.098")



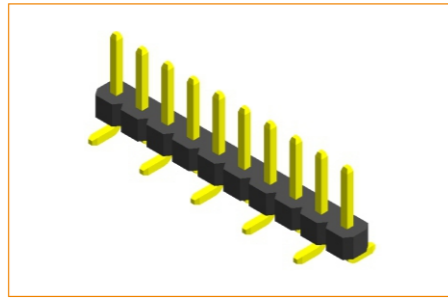
Pitch 2.0mm(0.079")
HMLSS15/HMLSS20
H=1.5/2.0mm(0.059"/0.079")



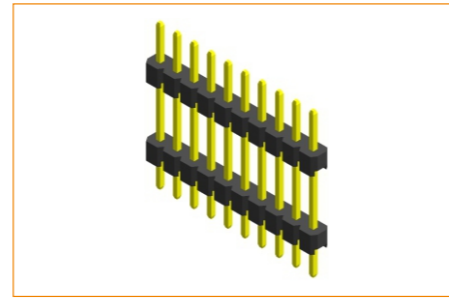
Pitch 2.0mm(0.079")
HMLSR15/HMLSR20
H=1.5/2.0mm(0.059"/0.079")



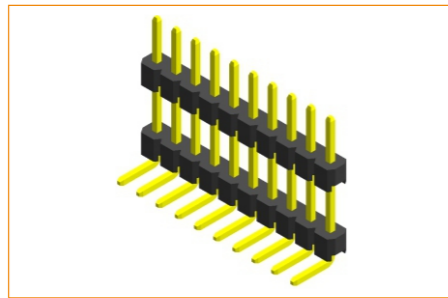
Pitch 2.0mm(0.079")
HMLSP15/HMLSP20
H=1.5/2.0mm(0.059"/0.079")



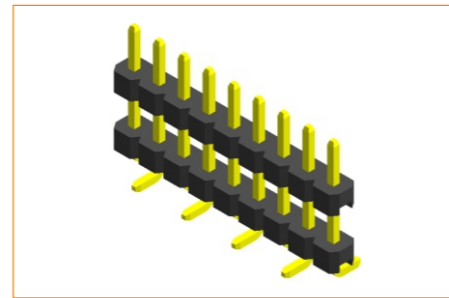
Pitch 2.0mm(0.079")
HMLSV15/HMLSV20/HMLSN15/HMLSN20
H=1.5/2.0mm(0.059"/0.079")



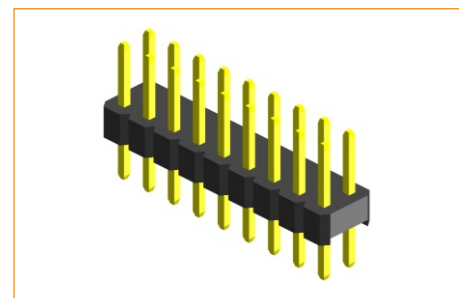
Pitch 2.0mm(0.079")
HMLSSH15/HMLSSH20
H=1.5/2.0mm(0.059"/0.079")



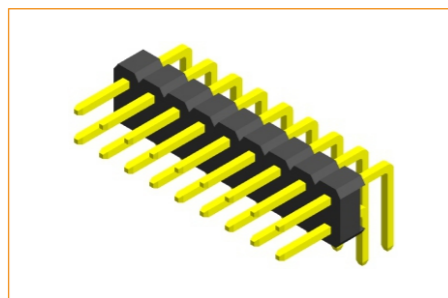
Pitch 2.0mm(0.079")
HMLSRH15/HMLSRH20
H=1.5/2.0mm(0.059"/0.079")



Pitch 2.0mm(0.079")
HMLSVH15/HMLSVH20/HMLSNH15/HMLSNH20
H=1.5/2.0mm(0.059"/0.079")



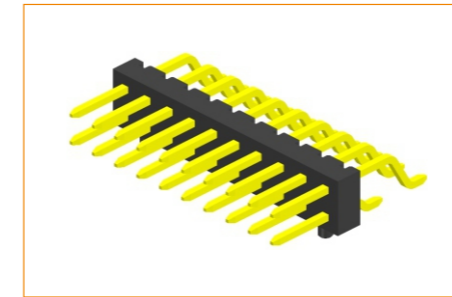
Pitch 2.0mm(0.079")
HMLDS15/HMLDS20
H=1.5/2.0mm(0.059"/0.079")



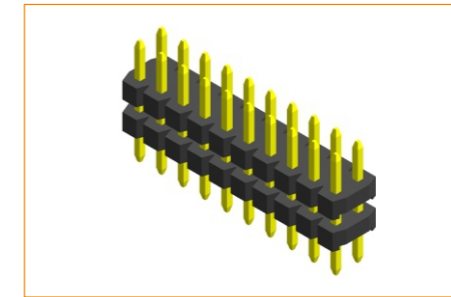
Pitch 2.0mm(0.079")
HMLDR15/HMLDR20
H=1.5/2.0mm(0.059"/0.079")



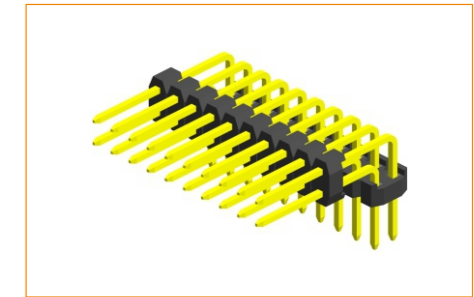
Pitch 2.0mm(0.079")
HMLDM15/HMLDM20
H=1.5/2.0mm(0.059"/0.079")



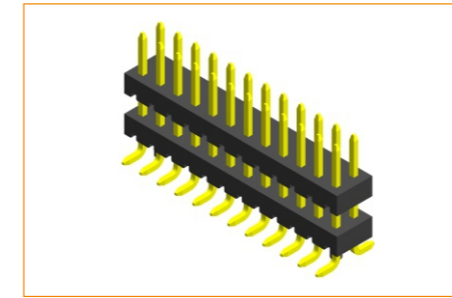
Pitch 2.0mm(0.079")
HMLDP15/HMLDP20
H=1.5/2.0mm(0.059"/0.079")



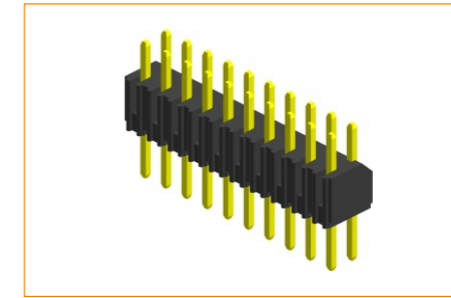
Pitch 2.0mm(0.079")
HMLDSH15/HMLDSH20
H=1.5/2.0mm(0.059"/0.079")



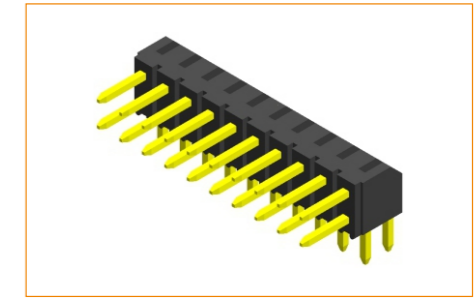
Pitch 2.0mm(0.079")
HMLDRH15/HMLDRH20
H=1.5/2.0mm(0.059"/0.079")



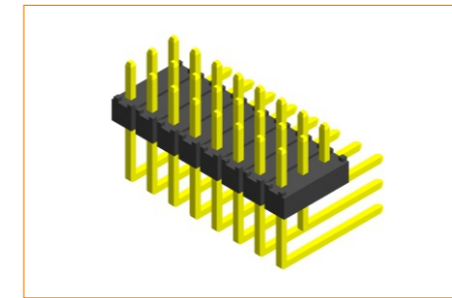
Pitch 2.0mm(0.079")
HMLDMH15/HMLDMH20
H=1.5/2.0mm(0.059"/0.079")



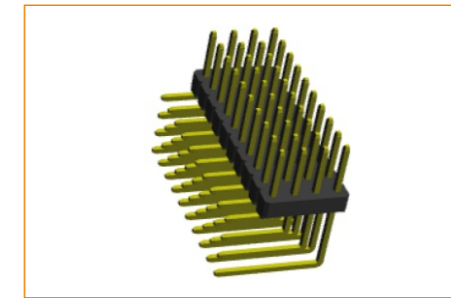
Pitch 2.0mm(0.079")
HMLDS43
H=4.3mm(0.169")



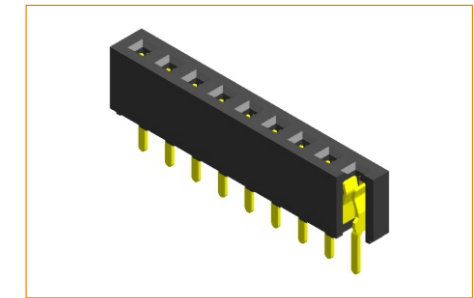
Pitch 2.0mm(0.079")
HMLDR43
H=4.3mm(0.169")



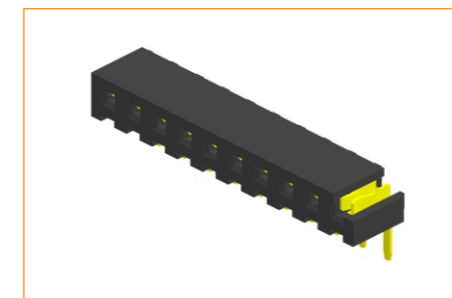
Pitch 2.0mm(0.079")
HMLTR20
H=2.0mm(0.079")



Pitch 2.0mm(0.079")
HMLQR20
H=2.0mm(0.079")



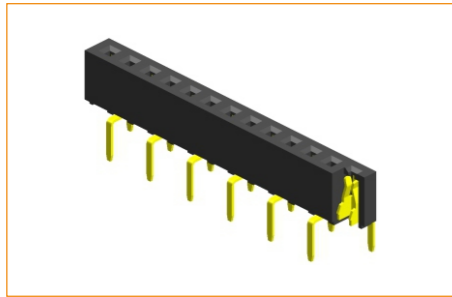
Pitch 2.0mm(0.079")
HFLSS40/HFLSS43/HFLSS46
H=4.0/4.3/4.6mm(0.157"/0.169"/0.181")



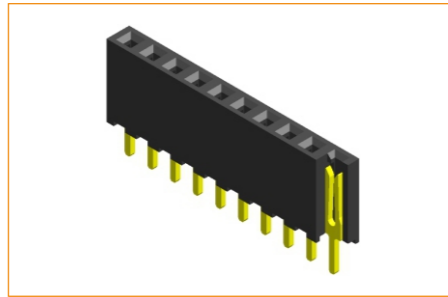
Pitch 2.0mm(0.079")
HFLSR40/HFLSR43/HFLSR46
H=4.0/4.3/4.6mm(0.157"/0.169"/0.181")



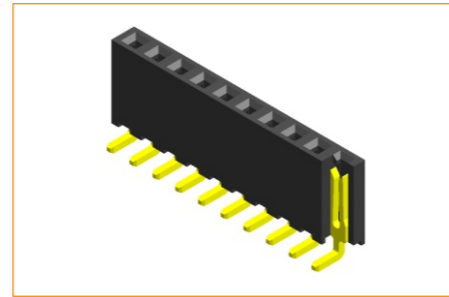
Pitch 2.0mm(0.079")
HFLSN40/HFLSN43/HFLSN46/
HFLSV40/HFLSV43/HFLSV46
H=4.0/4.3/4.6mm(0.157"/0.169"/0.181")



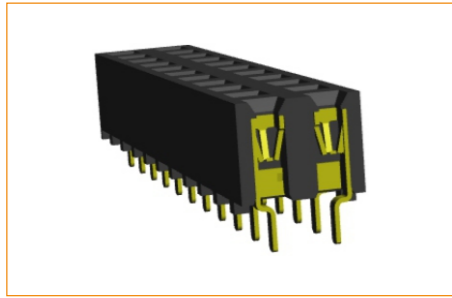
Pitch 2.0mm(0.079")
HFLST43
H=4.3mm(0.169")



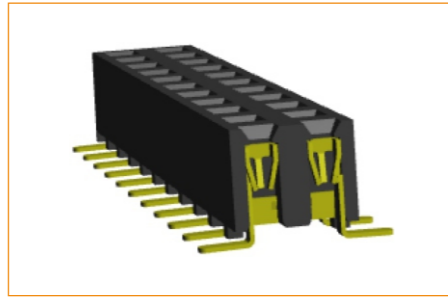
Pitch 2.0mm(0.079")
HFLSS63
H=6.3mm(0.248")



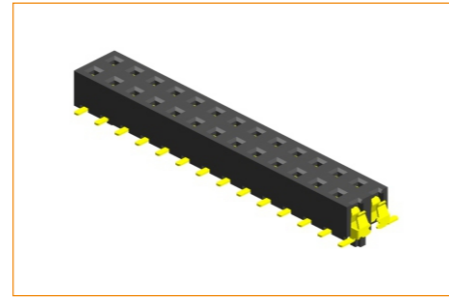
Pitch 2.0mm(0.079")
HFLSR63
H=6.3mm(0.248")



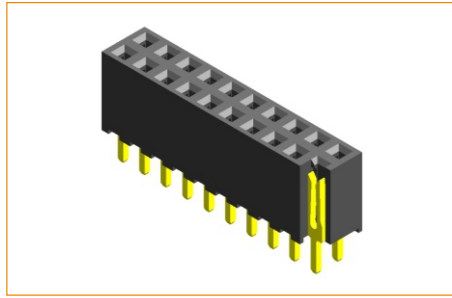
Pitch 2.0mm(0.079")
HFLDS35
H=3.5mm(0.138")



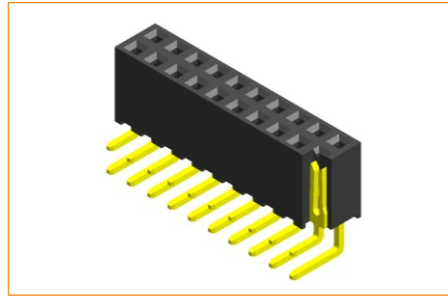
Pitch 2.0mm(0.079")
HFLDM35
H=3.5mm(0.138")



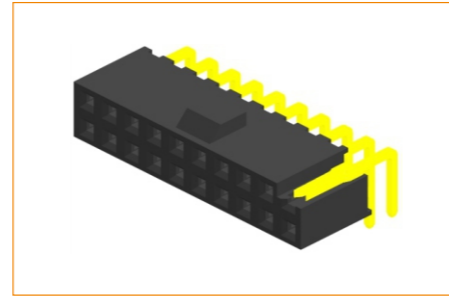
Pitch 2.0mm(0.079")
HFLDM20
H=2.0mm(0.079")



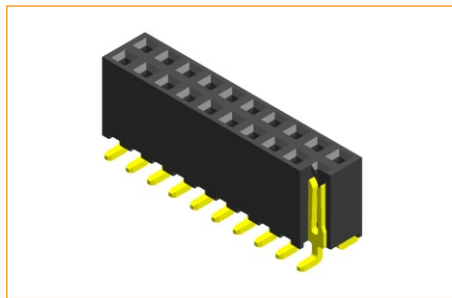
Pitch 2.0mm(0.079")
HFLDS63
H=6.3mm(0.248")



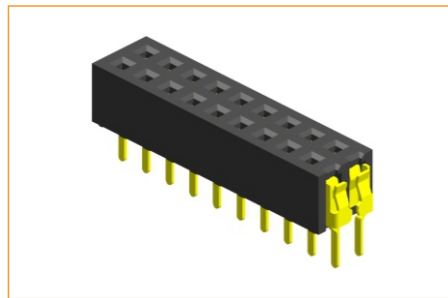
Pitch 2.0mm(0.079")
HFLDR63
H=6.3mm(0.248")



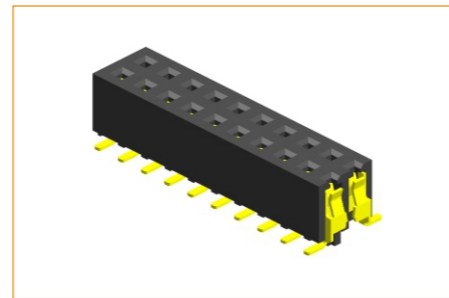
Pitch 2.0mm(0.079")
HFLDR63-T002
H=6.3mm(0.248")



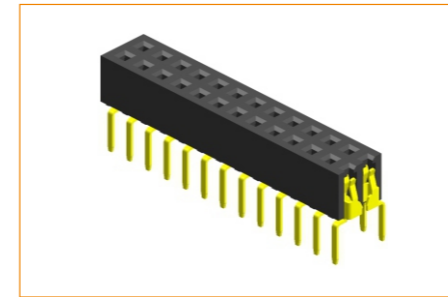
Pitch 2.0mm(0.079")
HFLDM63
H=6.3mm(0.248")



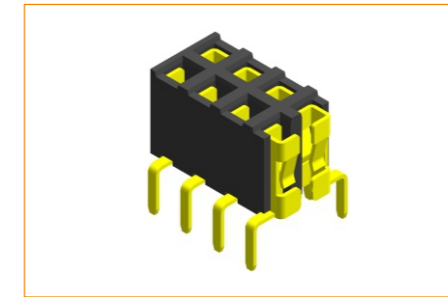
Pitch 2.0mm(0.079")
HFLDS40/HFLDS43/HFLDS46
H=4.0/4.3/4.6mm(0.157"/0.169"/0.181")



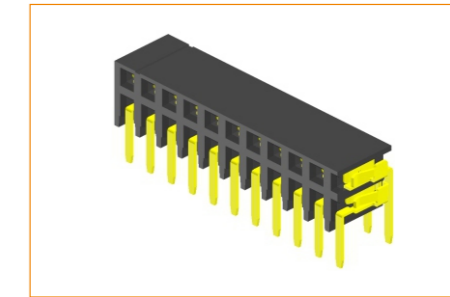
Pitch 2.0mm(0.079")
HFLDM40/HFLDM43/HFLDM46
H=4.0/4.3/4.6mm(0.157"/0.169"/0.181")



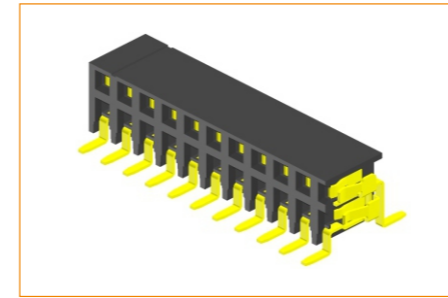
Pitch 2.0mm(0.079")
HFLDT43-T002
H=4.3mm(0.169")



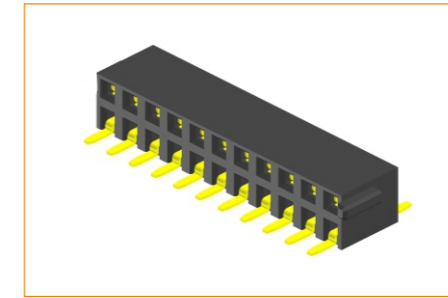
Pitch 2.0mm(0.079")
HFLDT45-T001
H=4.5mm(0.177")



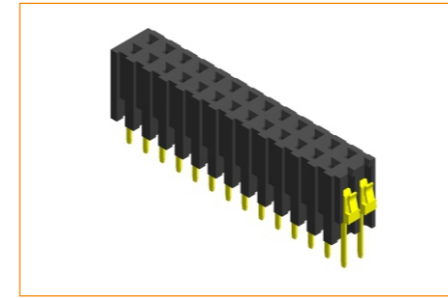
Pitch 2.0mm(0.079")
HFLDR51
H=5.1mm(0.201")



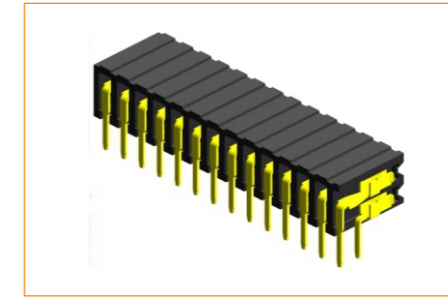
Pitch 2.0mm(0.079")
HFLDM51
H=5.1mm(0.201")



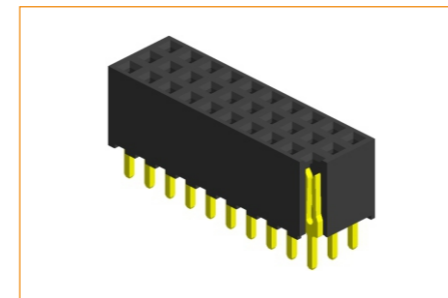
Pitch 2.0mm(0.079")
HFLDM51-P090
H=5.1mm(0.201")



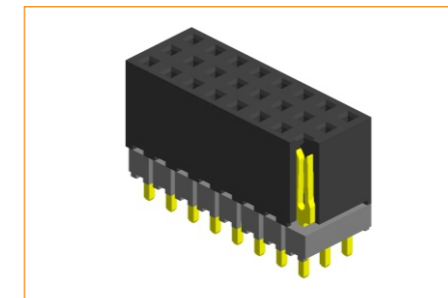
Pitch 2.0mm(0.079")
HFLDS72
H=7.2mm(0.283")



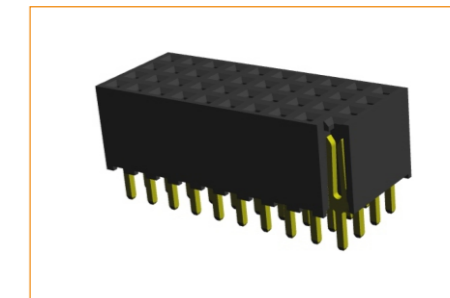
Pitch 2.0mm(0.079")
HFLDR72
H=7.2mm(0.283")



Pitch 2.0mm(0.079")
HFLTS63
H=6.3mm(0.248")

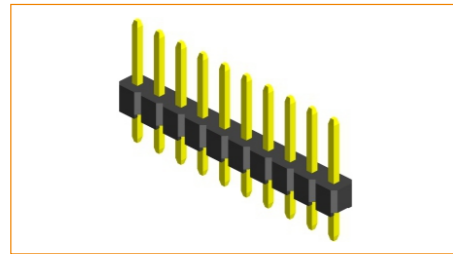


Pitch 2.0mm(0.079")
HFLTSH63
H=6.3mm(0.248")



Pitch 2.0mm(0.079")
HFLQS63
H=6.3mm(0.248")

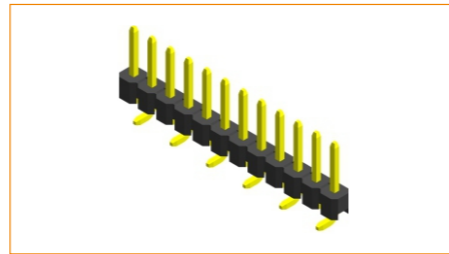




Pitch 2.54mm(0.1")
HMNS15/HMNS20/HMNS25
H=1.5/2.0/2.5mm(0.059"/0.079"/0.098")



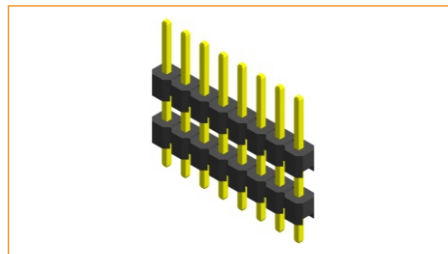
Pitch 2.54mm(0.1")
HMNSR15/HMNSR20/HMNSR25
H=1.5/2.0/2.5mm(0.059"/0.079"/0.098")



Pitch 2.54mm(0.1")
HMNS15/HMNS20/HMNS25/
HMNSV15/HMNSV20/HMNSV25
H=1.5/2.0/2.5mm(0.059"/0.079"/0.098")



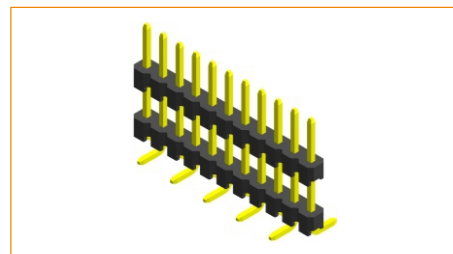
Pitch 2.54mm(0.1")
HMNSP25/HMNSP30
H=2.5/3.0mm(0.098"/0.118")



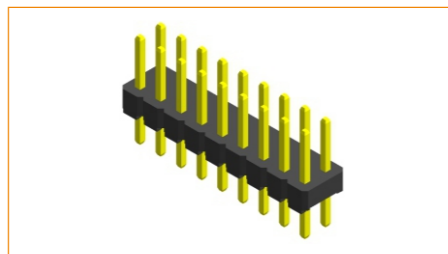
Pitch 2.54mm(0.1")
HMNSH15/HMNSH25
H=1.5/2.5mm(0.059"/0.098")



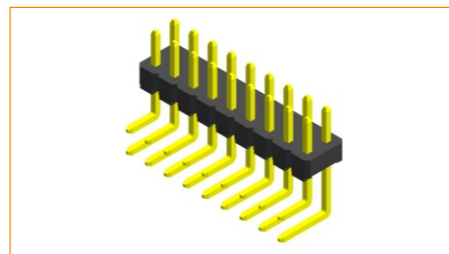
Pitch 2.54mm(0.1")
HMNSRH15/HMNSRH25
H=1.5/2.5mm(0.059"/0.098")



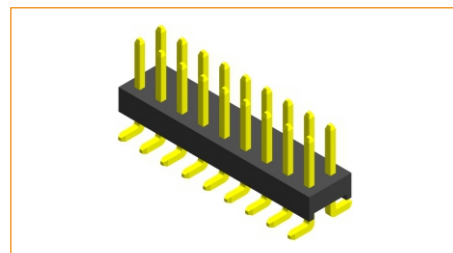
Pitch 2.54mm(0.1")
HMNSNH15/HMNSNH25/HMNSVH15/HMNSVH25
H=1.5/2.5mm(0.059"/0.098")



Pitch 2.54mm(0.1")
HMNS15/HMNS25/HMNS43
H=1.5/2.5/4.3mm(0.059"/0.098"/0.169")



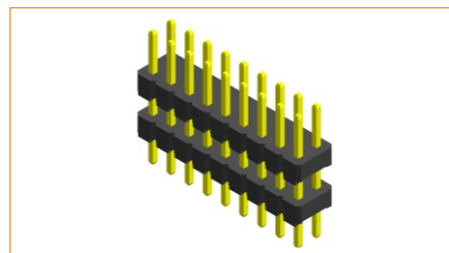
Pitch 2.54mm(0.1")
HMNS15/HMNS25/HMNS43/HMNSR43
H=1.5/2.5/4.3/7.4mm(0.059"/0.098"/0.169"/0.291")



Pitch 2.54mm(0.1")
HMNSM15/HMNSM25/HMNSM43
H=1.5/2.5/4.3mm(0.059"/0.098"/0.169")

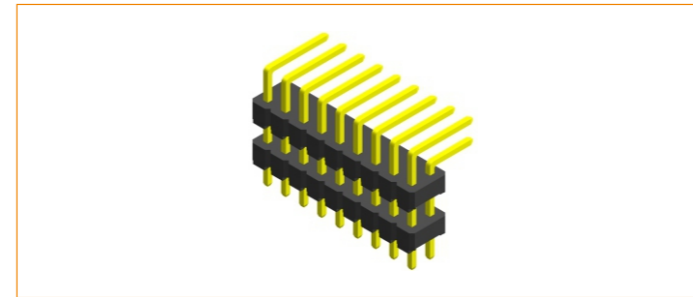


Pitch 2.54mm(0.1")
HMNSP61
H=2.54mm(0.1")

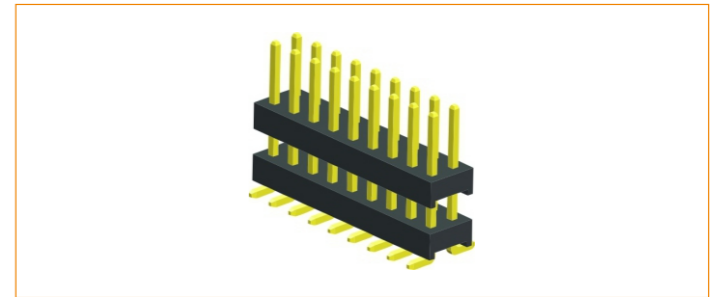


Pitch 2.54mm(0.1")
HMNSH15/HMNSH25
H=1.5/2.5mm(0.059"/0.098")

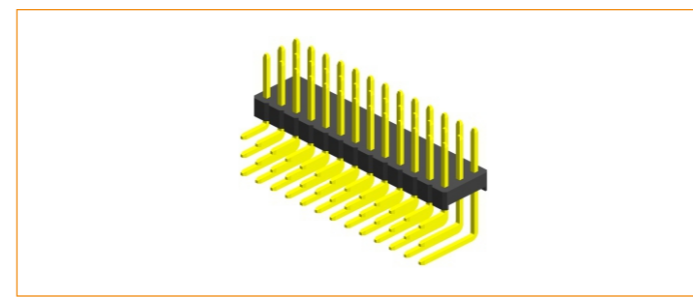
Pitch 2.54mm(0.1") >>>>



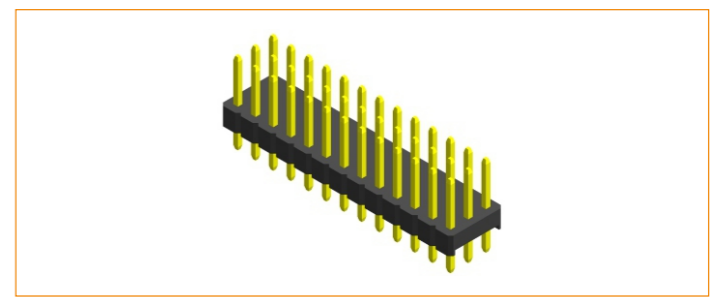
Pitch 2.54mm(0.1")
HMNSRH15/HMNSRH25
H=1.5/2.5mm(0.059"/0.098")



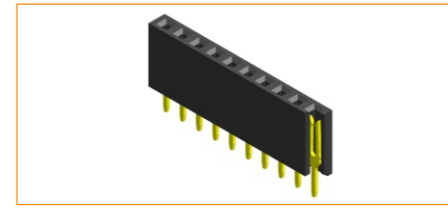
Pitch 2.54mm(0.1")
HMNSM15/HMNSM25
H=1.5/2.5mm(0.059"/0.098")



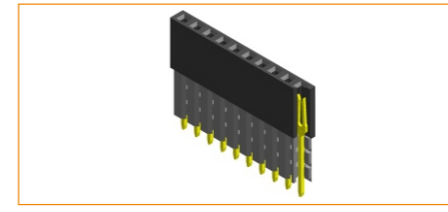
Pitch 2.54mm(0.1")
HMNSR15/HMNSR25
H=1.5/2.5mm(0.059"/0.098")



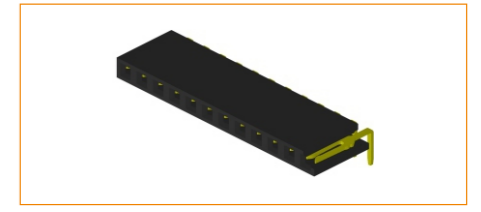
Pitch 2.54mm(0.1")
HMNS15/HMNS25
H=1.5/2.5mm(0.059"/0.098")



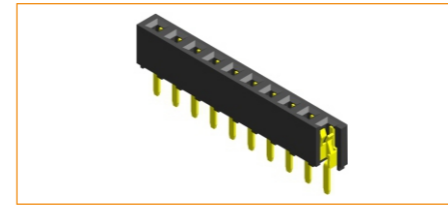
Pitch 2.54mm(0.1")
HFNS57/HFNS8Y
H=5.7/8.5mm(0.224"/0.335")



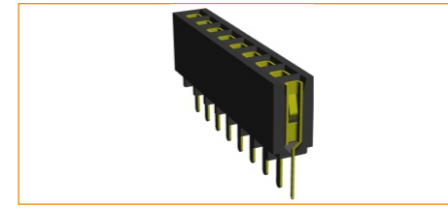
Pitch 2.54mm(0.1")
HFNSR57/HFNSR8Y
H=8.5mm(0.335")



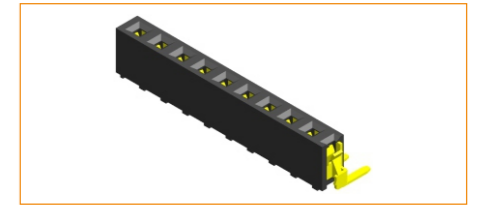
Pitch 2.54mm(0.1")
HFNSR57/HFNSR8Y
H=5.7/8.5mm(0.224"/0.335")



Pitch 2.54mm(0.1")
HFNS50/HFNS71/HFNS85
H=5.0/7.1/8.5mm(0.197"/0.28"/0.335")



Pitch 2.54mm(0.1")
HFNS68
H=6.8mm(0.268")

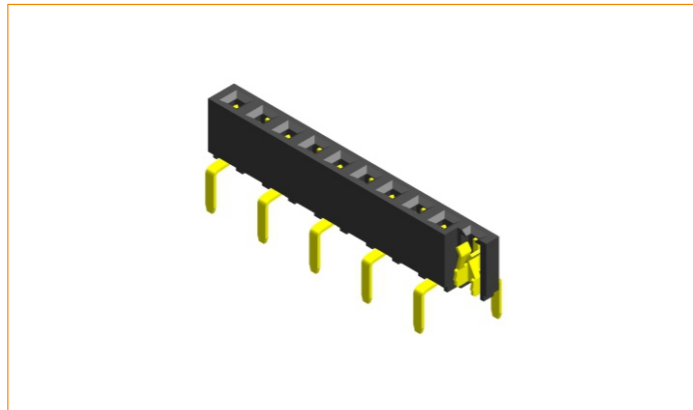


Pitch 2.54mm(0.1")
HFNSR50
H=5.0mm(0.197")

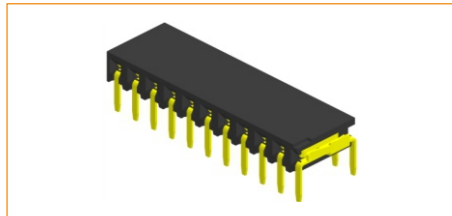
<<<< Pitch 2.54mm(0.1")



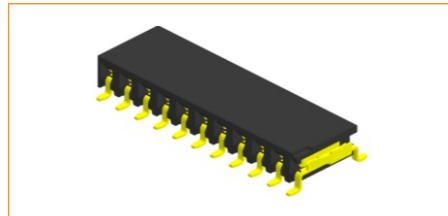
Pitch 2.54mm(0.1")
HFNSV50/HFNSV71/HFNSV85/
HFNSN50/HFNSN71/HFNSN85
H=5.0/7.1/8.5mm(0.197"/0.28"/0.335")



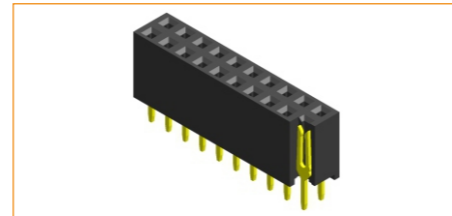
Pitch 2.54mm(0.1")
HFNST35/HFNST50/HFNST71
H=3.5/5.0/7.1mm(0.138"/0.197"/0.28")



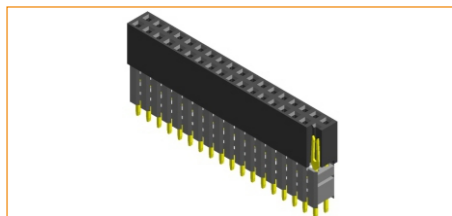
Pitch 2.54mm(0.1")
HFNSR81
H=8.1mm(0.319")



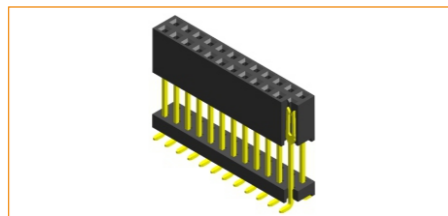
Pitch 2.54mm(0.1")
HFNSM81
H=8.1mm(0.319")



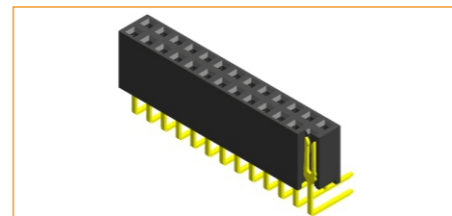
Pitch 2.54mm(0.1")
HFNS57/HFNDS8Y/HFNDS11
H=5.7/8.5/11.1mm(0.224"/0.335"/0.433")



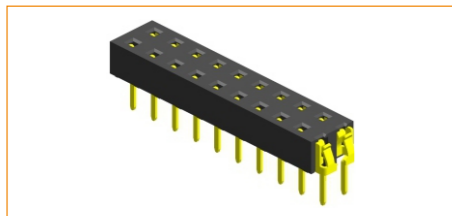
Pitch 2.54mm(0.1")
HFNSH8YP
H=8.5mm(0.335")



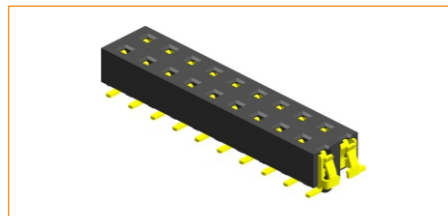
Pitch 2.54mm(0.1")
HFNDMH8YP
H=8.5mm(0.335")



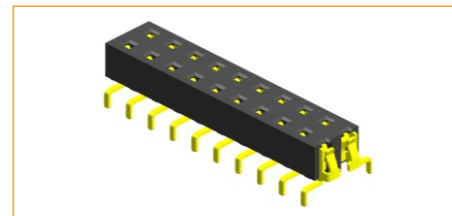
Pitch 2.54mm(0.1")
HFNDR57/HFNDR8Y/HFNDR8T
H=5.7/8.5/8.5mm(0.224"/0.335"/0.335")



Pitch 2.54mm(0.1")
HFNS35
H=3.5mm(0.138")

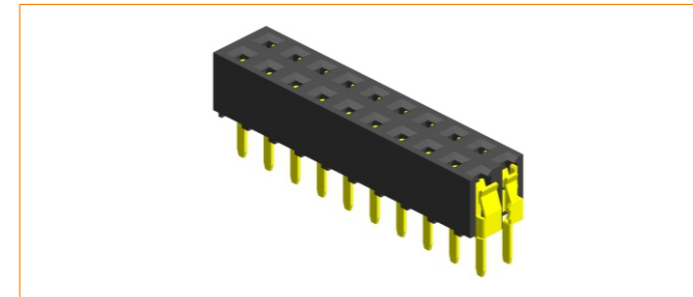


Pitch 2.54mm(0.1")
HFNDM35
H=3.5mm(0.138")

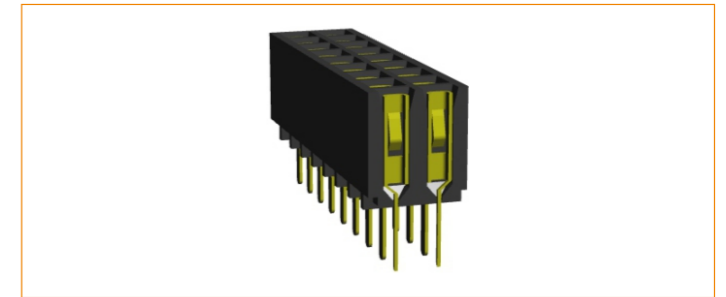


Pitch 2.54mm(0.1")
HFNDT35/HFNST50/HFNST71
H=3.5/5.0/7.1mm(0.138"/0.197"/0.28")

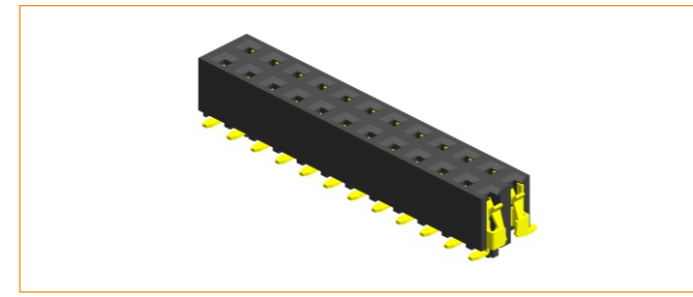
Pitch 2.54mm(0.1") >>>>



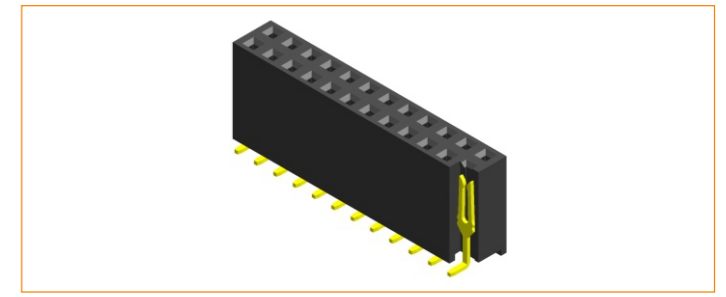
Pitch 2.54mm(0.1")
HFNDS50/HFNDS71/HFNDS85
H=5.0/7.1/8.5mm(0.197"/0.28"/0.335")



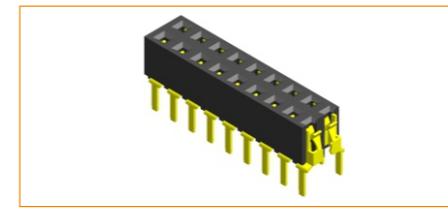
Pitch 2.54mm(0.1")
HFNS68
H=6.8mm(0.268")



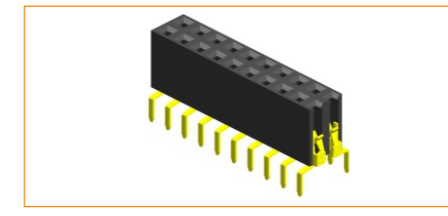
Pitch 2.54mm(0.1")
HFNDM50/HFNDM71
H=5.0/7.1mm(0.197"/0.28")



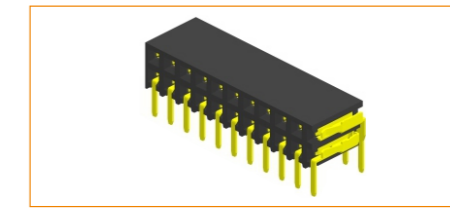
Pitch 2.54mm(0.1")
HFNDM57/HFNDM8Y/HFNDM11
H=5.7/8.5/11.1mm(0.224"/0.335"/0.433")



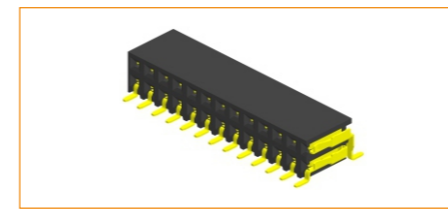
Pitch 2.54mm(0.1")
HFNDT50
H=5.0mm(0.197")



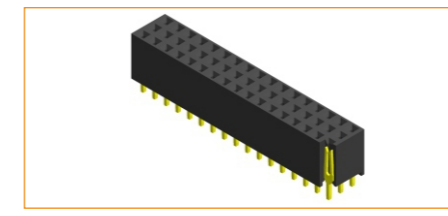
Pitch 2.54mm(0.1")
HFNDT71
H=7.1mm(0.28")



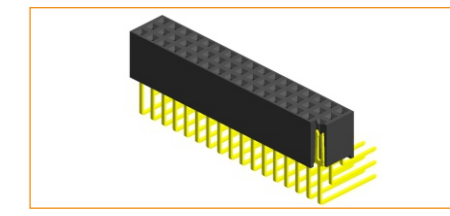
Pitch 2.54mm(0.1")
HFNDR81
H=8.1mm(0.319")



Pitch 2.54mm(0.1")
HFNDM81
H=8.1mm(0.319")



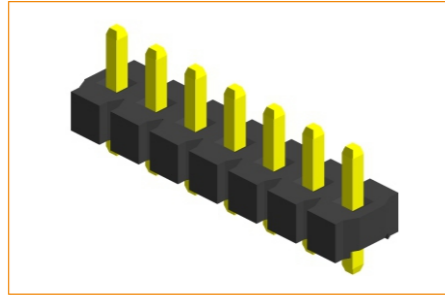
Pitch 2.54mm(0.1")
HFNTS8Y
H=8.5mm(0.335")



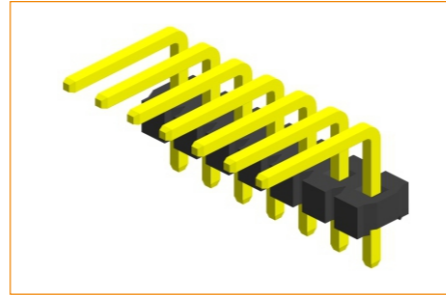
Pitch 2.54mm(0.1")
HFNTR8Y
H=8.5mm(0.335")

<<<< Pitch 2.54mm(0.1")

Pitch 3.96mm
(0.156")



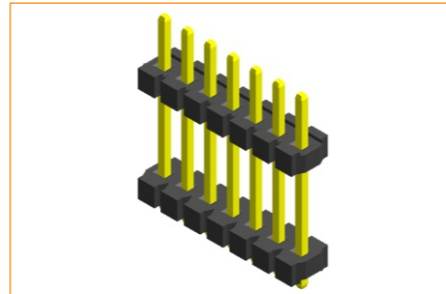
Pitch 3.96mm(0.156")
HMPSS31
H=3.1mm(0.122")



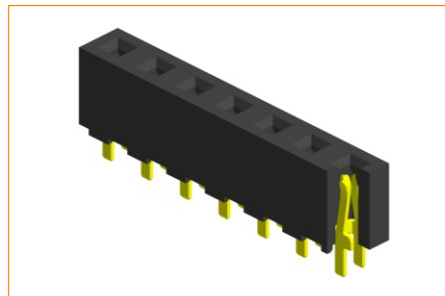
Pitch 3.96mm(0.156")
HMPSR31
H=3.1mm(0.122")



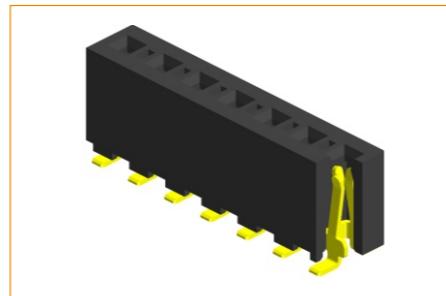
Pitch 3.96mm(0.156")
HMPSN31/HMPSV31
H=3.1mm(0.122")



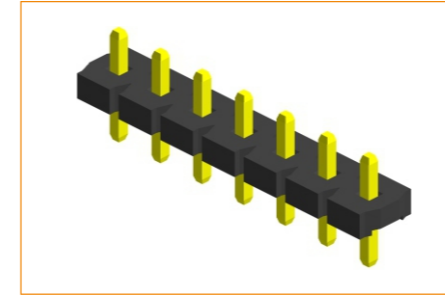
Pitch 3.96mm(0.156")
HMPSH31
H=3.1mm(0.122")



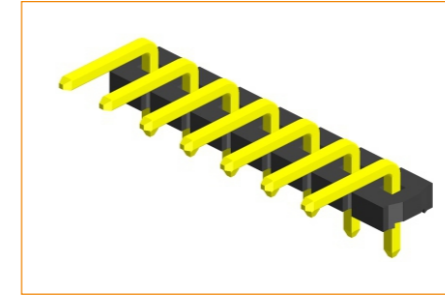
Pitch 3.96mm(0.156")
HFSS89
H=8.9mm(0.35")



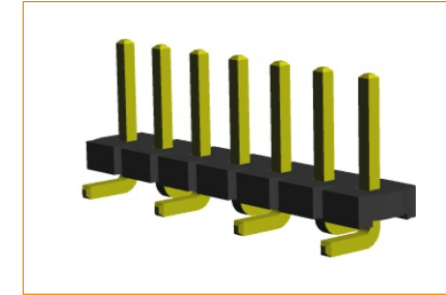
Pitch 3.96mm(0.156")
HFPSM89
H=8.9mm(0.35")



Pitch 5.08mm(0.2")
HMRSS25
H=2.5mm(0.098")

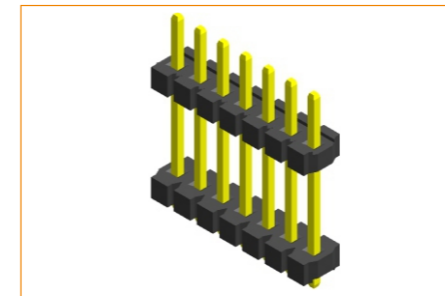


Pitch 5.08mm(0.2")
HMRSR25
H=2.5mm(0.098")

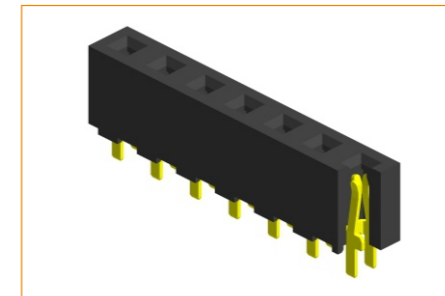


Pitch 5.08mm(0.2")
HMRSV25/HMRSN25
H=2.5/2.5mm(0.098"/0.098")

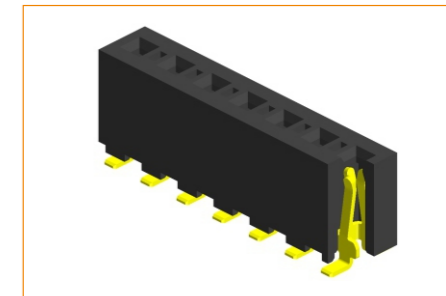
Pitch 5.08mm(0.2")



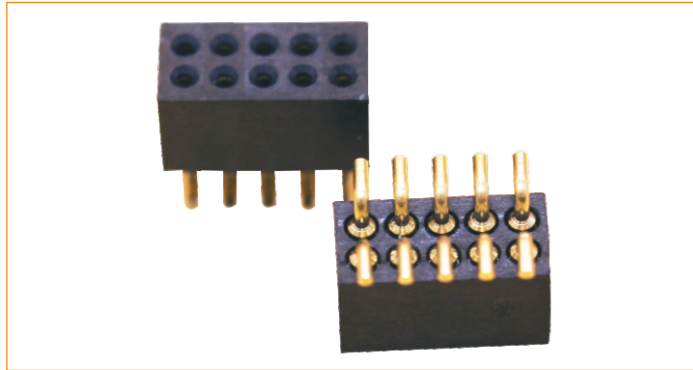
Pitch 5.08mm(0.2")
HMRSSH25
H=2.5/2.5mm(0.098"/0.098")



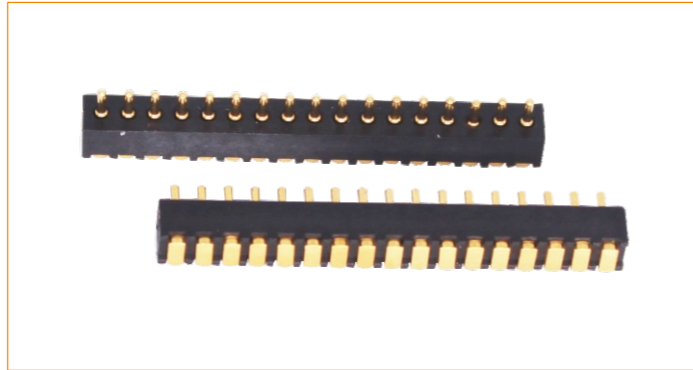
Pitch 5.08mm(0.2")
HFRSS89
H=8.9mm(0.35")



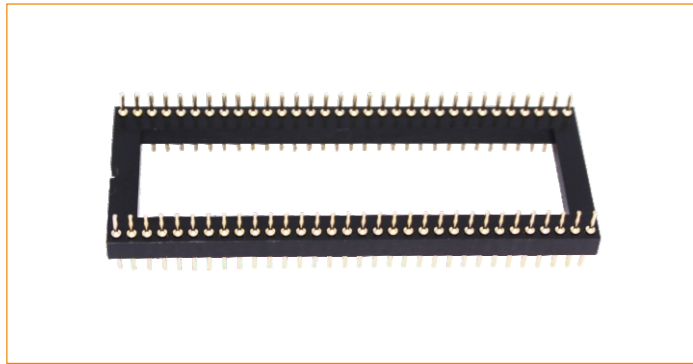
Pitch 5.08mm(0.2")
HFRSM89
H=8.9mm(0.35")



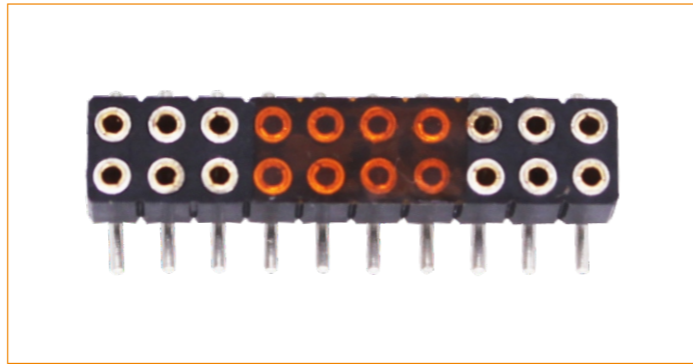
Pitch 1.27mm(0.05")
HFIRDM30
H=3.0mm(0.118")



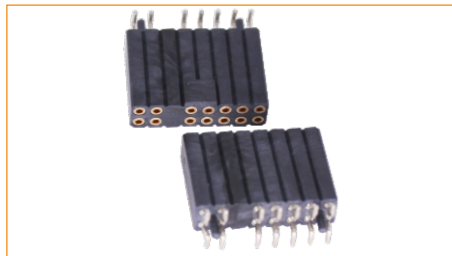
Pitch 1.27mm(0.05")
HFIRSM22
H=2.2mm(0.087")



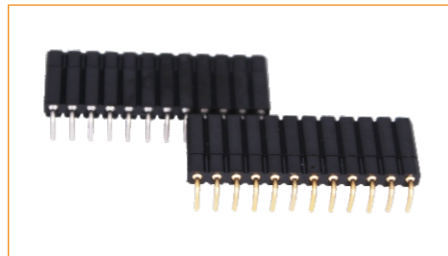
Pitch 1.778mm(0.07")
HMSRDS30
H=3.0mm(0.118")



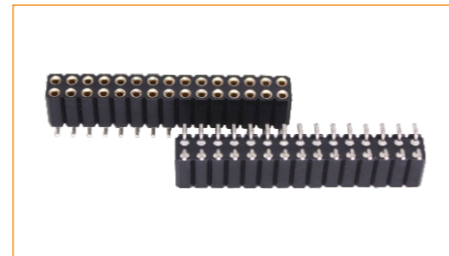
Pitch 2.0mm(0.079")
HFLRDM28
H=2.8mm(0.11")



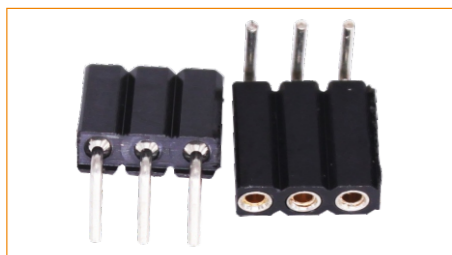
Pitch 2.0mm(0.079")
HFLRDM11
H=11.5mm(0.453")



Pitch 2.54mm(0.1")
HFNRSR10
H=10.0mm(0.394")



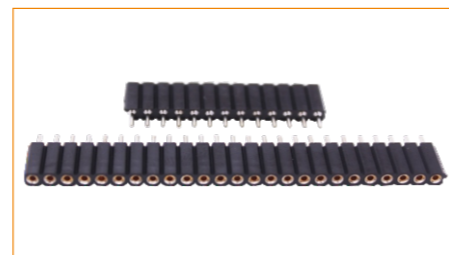
Pitch 2.54mm(0.1")
HFNRDM70
H=7.0mm(0.276")



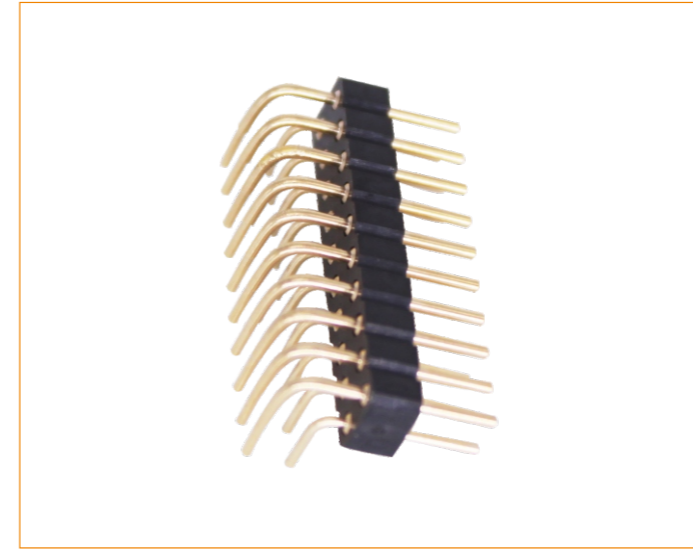
Pitch 2.54mm(0.1")
HFNRSR70
H=7.0mm(0.276")



Pitch 2.54mm(0.1")
HFNRSM30
H=3.0mm(0.118")



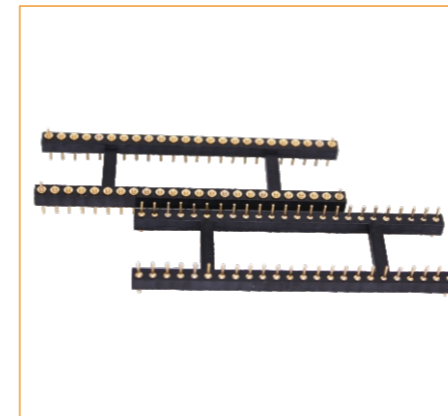
Pitch 2.54mm(0.1")
HFNRSS70
H=7.0mm(0.276")



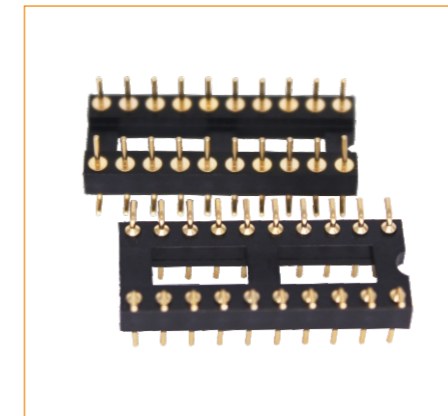
Pitch 2.54mm(0.1")
HMNRDR30
H=3.0mm(0.118")



Pitch 2.54mm(0.1")
HFNRDS11
H=11.0mm(0.433")



Pitch 2.54mm(0.1")
HMNRDS30
H=3.0mm(0.118")



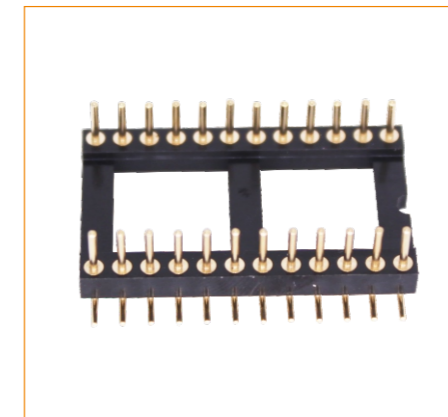
Pitch 2.54mm(0.1")
HMNRDM30
H=3.0mm(0.118")



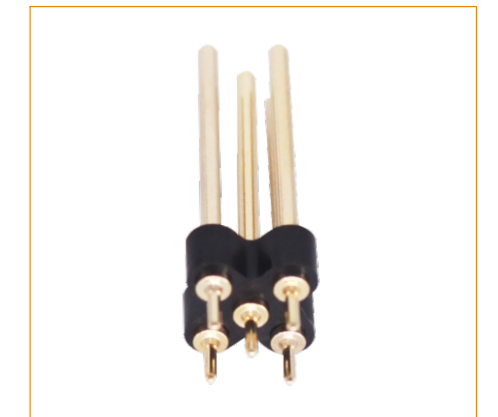
Pitch 2.54mm(0.1")
HFNRDM30
H=3.0mm(0.118")



Pitch 2.54mm(0.1")
HFNRDS30
H=3.0mm(0.118")



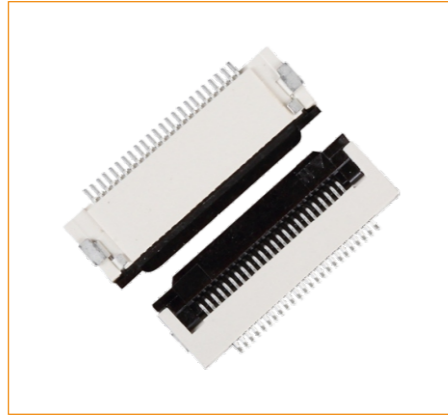
Pitch 2.54mm(0.1")
HMNRDM30-T001
H=3.0mm(0.118")



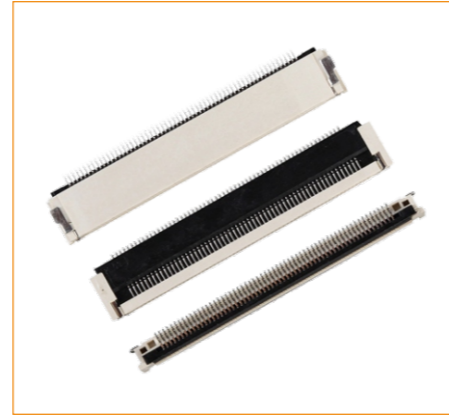
HMCRDT05



Pitch 0.5mm(0.02")
FCZSHD&U1



Pitch 0.5mm(0.02")
FCZSHV1



Pitch 0.5mm(0.02")
FCZSHV2



Pitch 0.5mm(0.02")
FCZSHV4



Pitch 0.5mm(0.02")
FCZSHV7



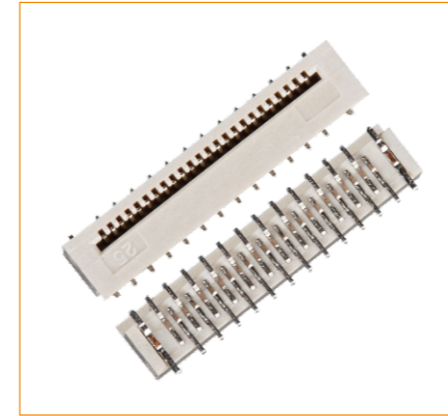
Pitch 0.5mm(0.02")
FCZSHV9



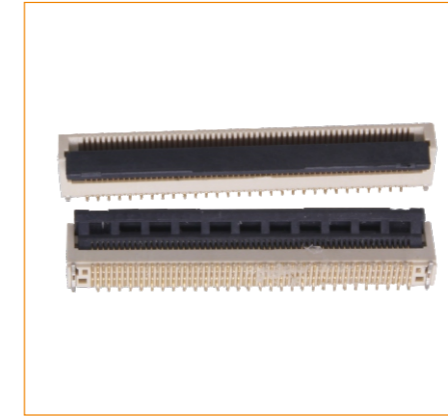
Pitch 0.5mm(0.02")
FCZSHV10



Pitch 0.5mm(0.02")
FCZSVB1 & 2



Pitch 0.5mm(0.02")
FCZSVC1&2



Pitch 0.5mm(0.02")
FCZGSVC3



Pitch 0.5mm(0.02")
FCZSHV11



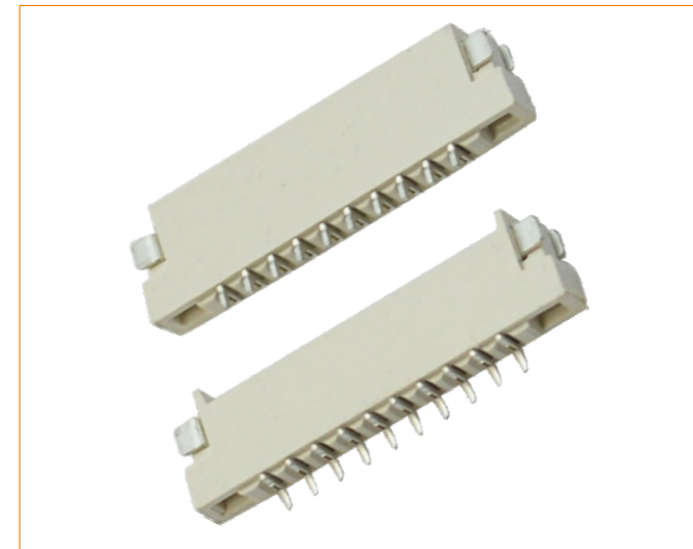
Pitch 0.5mm(0.02")
FCZSHV12



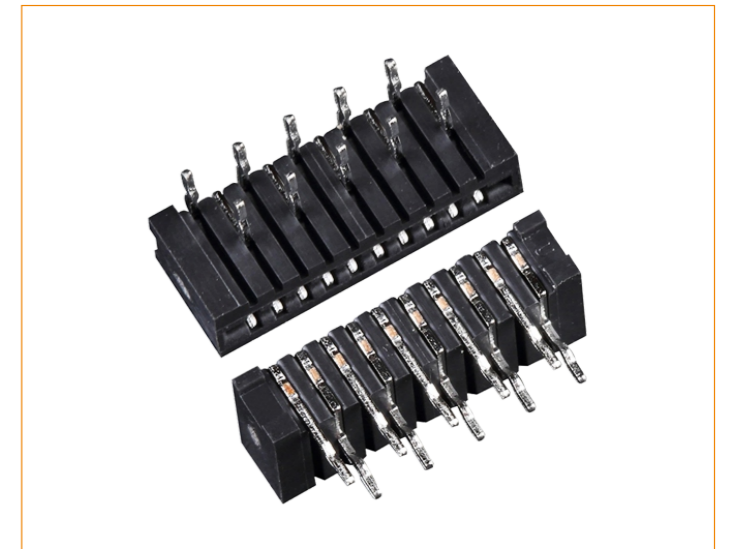
Pitch 0.8mm(0.031")
FCZEHU20



Pitch 1.0mm(0.039")
FCZGSVB3



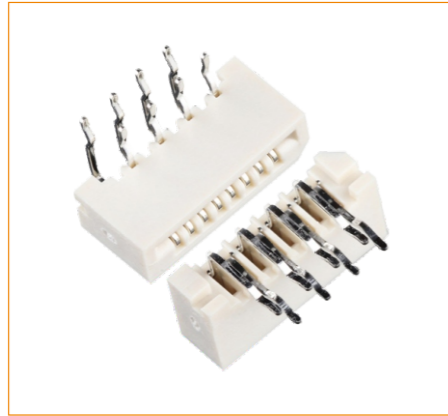
Pitch 1.0mm(0.039")
FCZGHU15



Pitch 1.0mm(0.039")
FCLGS1R&2R



Pitch 1.0mm(0.039")
FCLGS3B&4B



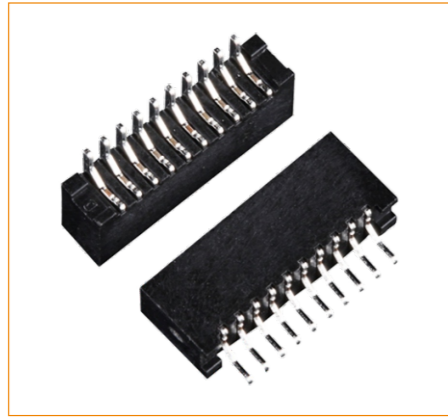
Pitch 1.0mm(0.039")
FCLGS3R&4R



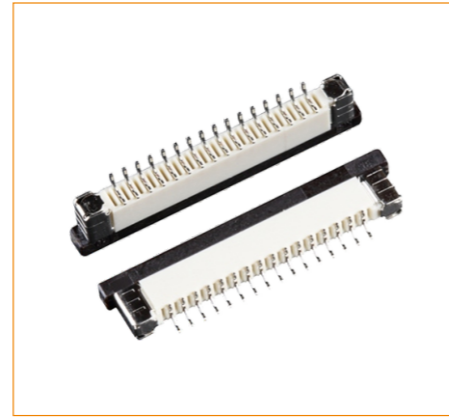
Pitch 1.0mm(0.039")
FCZGSVA2&A3



Pitch 1.0mm(0.039")
FCZGSHD1



Pitch 1.0mm(0.039")
FCZGSHD2



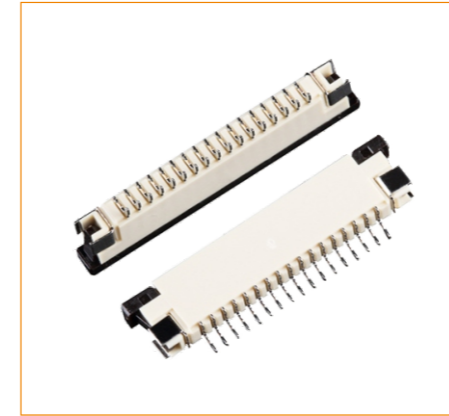
Pitch 1.0mm(0.039")
FCZGSHD3



Pitch 1.0mm(0.039")
FCZGSHD4



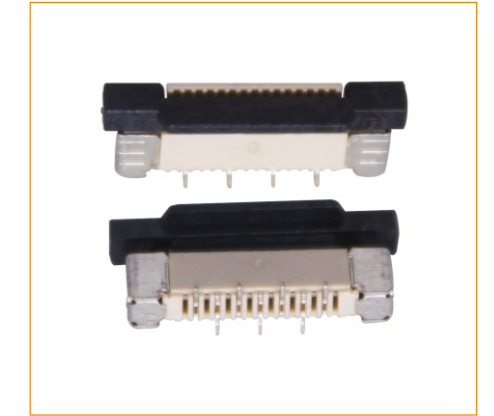
Pitch 1.0mm(0.039")
FCZGSHD5



Pitch 1.0mm(0.039")
FCZGSU1



Pitch 1.0mm(0.039")
FCZGSU3



Pitch 1.0mm(0.039")
FCZGSVB4



Pitch 1.0mm(0.039")
FCZGSVA6



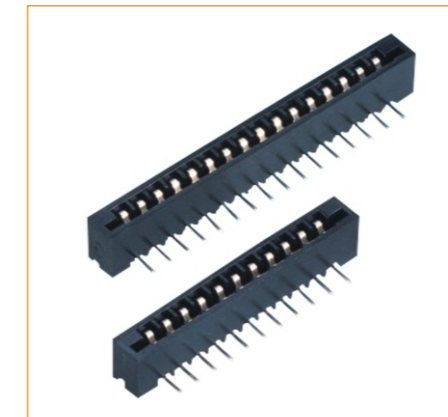
Pitch 1.0mm(0.039")
FCZGSVA4&A5



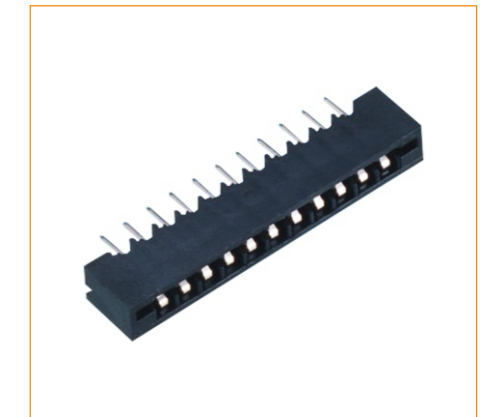
Pitch 1.25mm(0.049")
FCLSH1&2



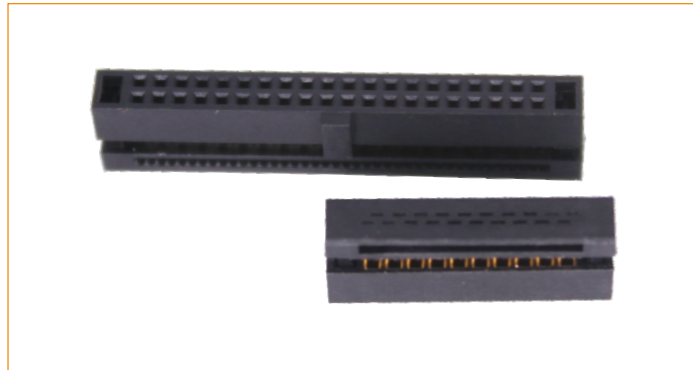
Pitch 1.25mm(0.049")
FCLHSR1&R2



Pitch 2.54mm(0.1")
FCLNR1



Pitch 2.54mm(0.1")
FCLNS1



Pitch 1.27mm(0.05")
IDCIF



Pitch 1.27mm(0.05")
IDCIF01



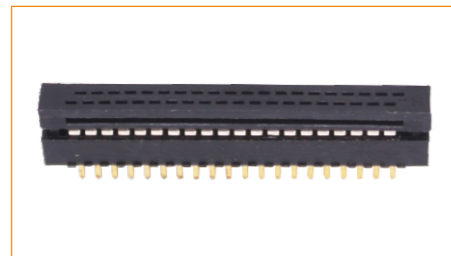
Pitch 2.0mm(0.079")
IDCLF



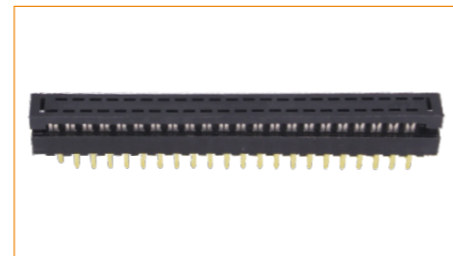
Pitch 2.0mm(0.079")
IDCLF01



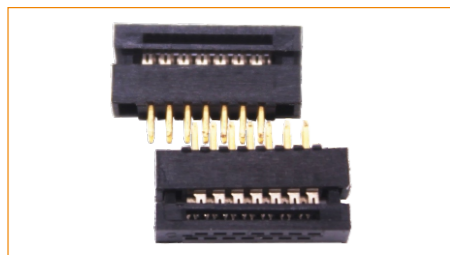
Pitch 2.54mm(0.1")
IDCNF



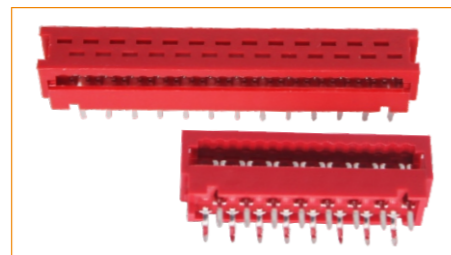
Pitch 1.27mm(0.05")
IDCIM



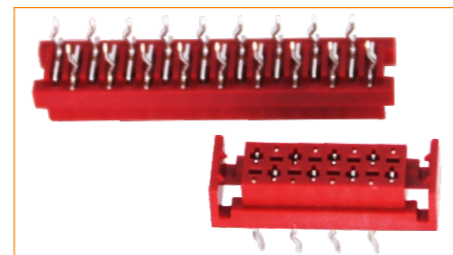
Pitch 2.0mm(0.079")
IDCLM



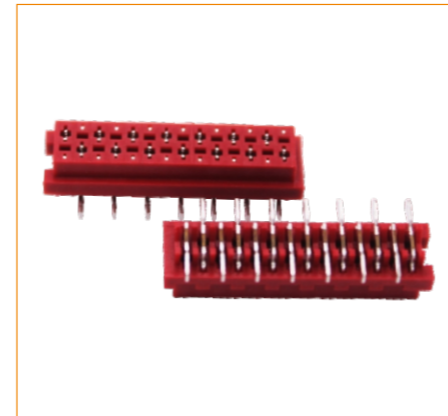
Pitch 2.54mm(0.1")
IDCNM



Pitch 1.27mm(0.05")
IDCJF



Pitch 1.27mm(0.05")
IDCJF3



Pitch 1.27mm(0.05")
IDCJF5



Pitch 1.27mm(0.05")
IDCJFR1



Pitch 1.27mm(0.05")
IDCJM1



Pitch 1.27mm(0.05")
IDCJM3



Pitch 2.54mm(0.1")
IDCBX01



Pitch 2.54mm(0.1")
IDCBX02



Pitch 2.54mm(0.1")
IDCNMCE



Pitch 2.54mm(0.1")
IDCNMCE01



Pitch 2.54mm(0.1")
IDCNMCE02



DB15P01IDC



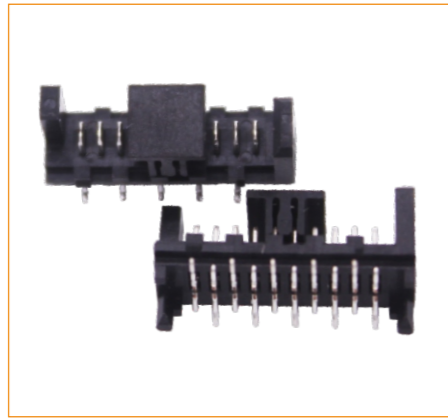
DB15S01IDC



DB25P02IDC



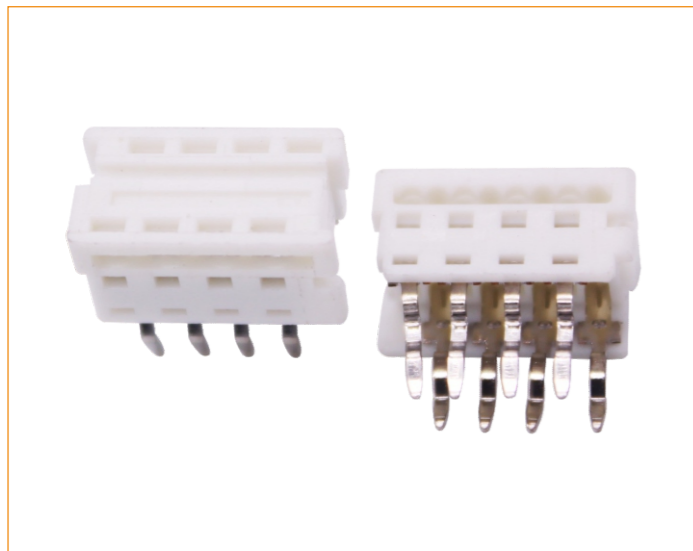
DB25S02IDC



IDTBPM01



IDTBPS01



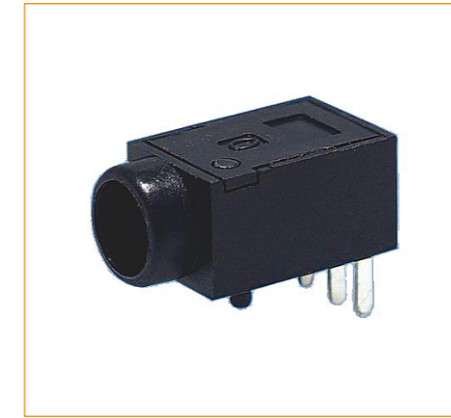
IDTS01



IDTW01



JKD2R1 Series



JKD3R1 Series



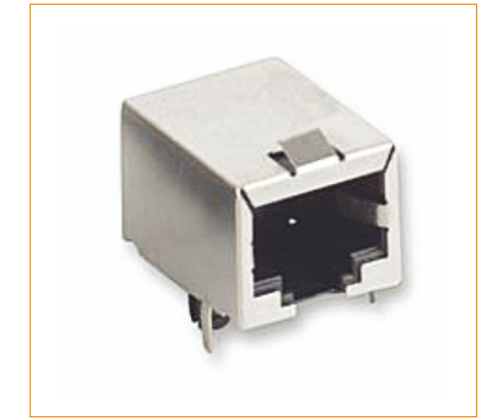
JKT1S1 Series



JKT4D4 Series



JKT4D5 Series



JKT4S1 Series



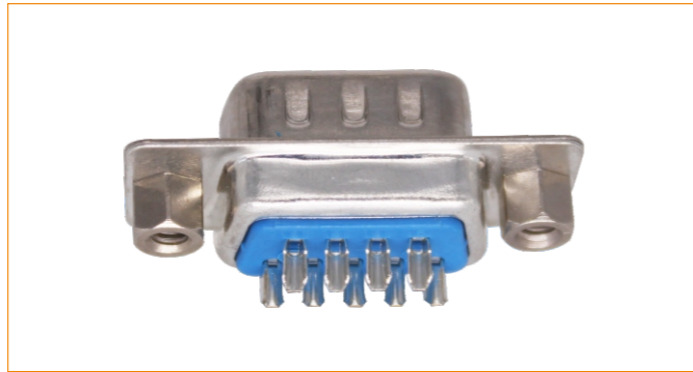
JKT4S2 Series



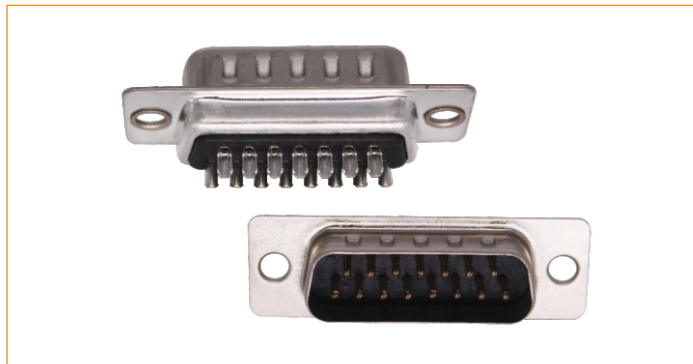
JKT4S3 Series



DB-005



DB-09P01



DB-15P



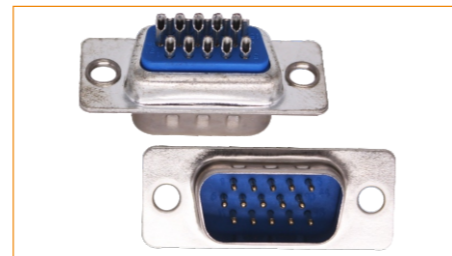
DB-15S



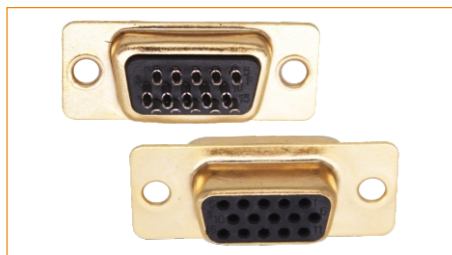
DB-25P



DB-37S



HDB15P-BL



HDB15S-01



HDB15S-BL



HDB26P-BK



HDB26S-BK



HDB62P-BK



HDB62S-BK



DIP-09S01



DIP-15S01



DIP-25S



DIP-37S01



DV25XX01



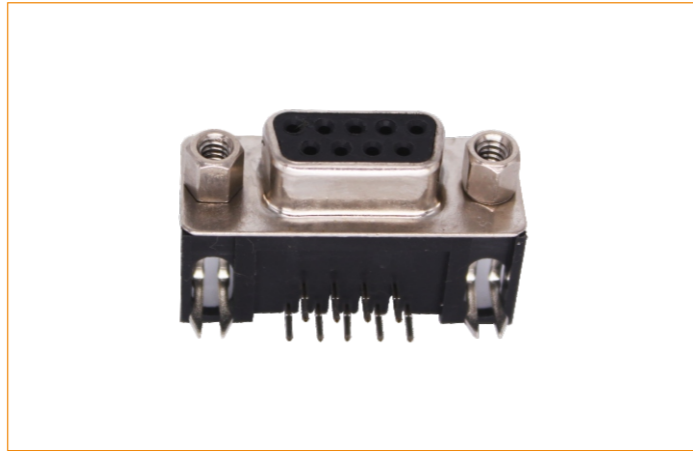
DV29PXX01



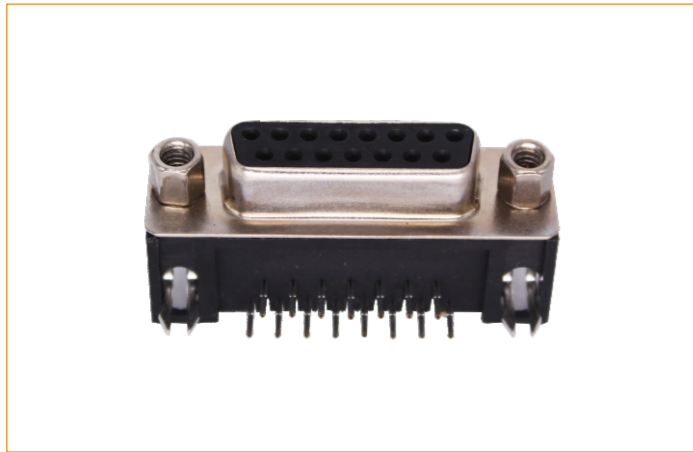
DV29XX01



EL1-9S



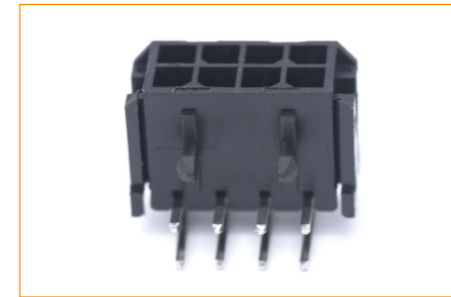
EL1-9SMT



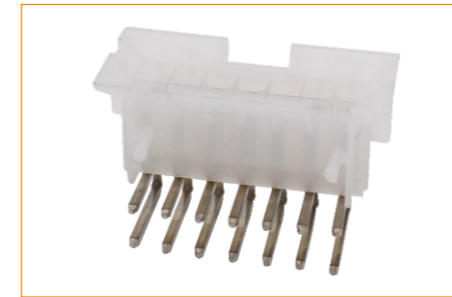
EL1-15SMT



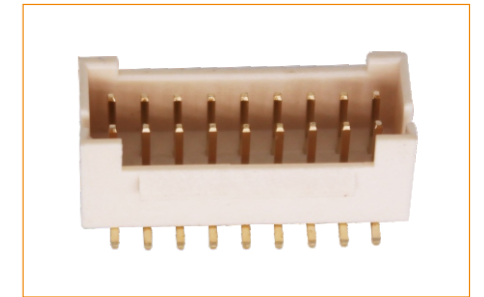
SCSIHPCN36M



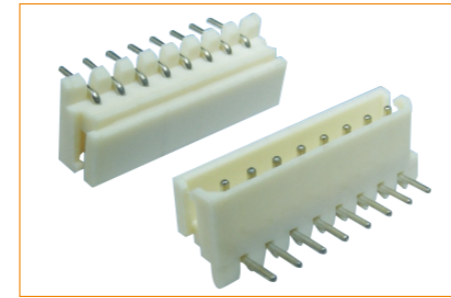
Pitch 3.0mm(0.118")
C3030WR-F Series



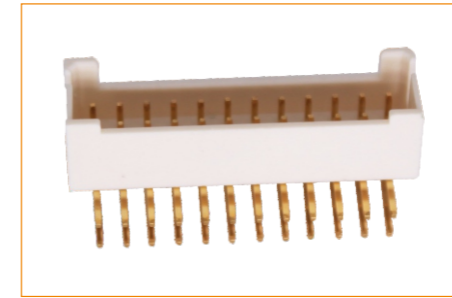
Pitch 4.2mm(0.165")
WF42090 Series



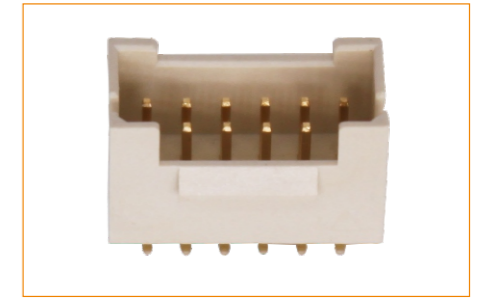
Pitch 2.0mm(0.079")
WFLDM03-A100 Series



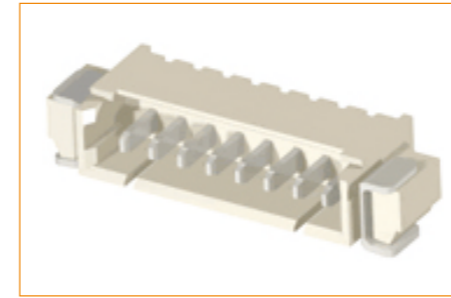
Pitch 2.5mm(0.098")
WFM3 Series



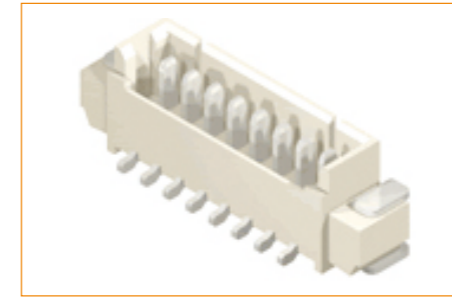
Pitch 2.0mm(0.079")
WFLDR03-A100 Series



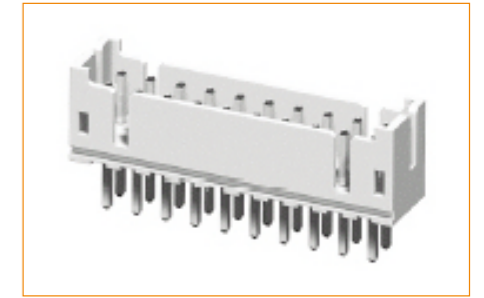
Pitch 2.0mm(0.079")
WFLDS03-A100 Series



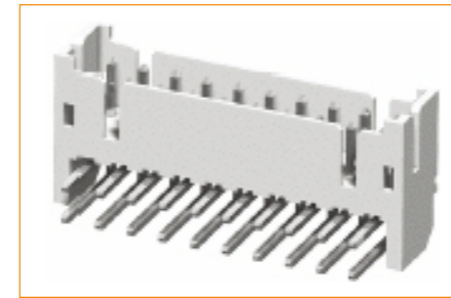
Pitch 1.25mm(0.049")
WFHSH1 Series



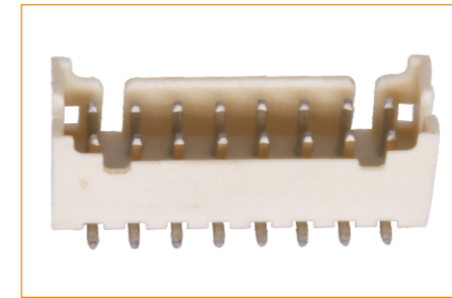
Pitch 1.25mm(0.049")
WFHSV1 Series



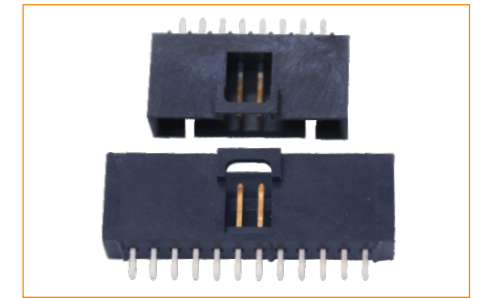
Pitch 2.0mm(0.079")
WFLDS04 Series



Pitch 2.0mm(0.079")
WFLDR01-A001 Series



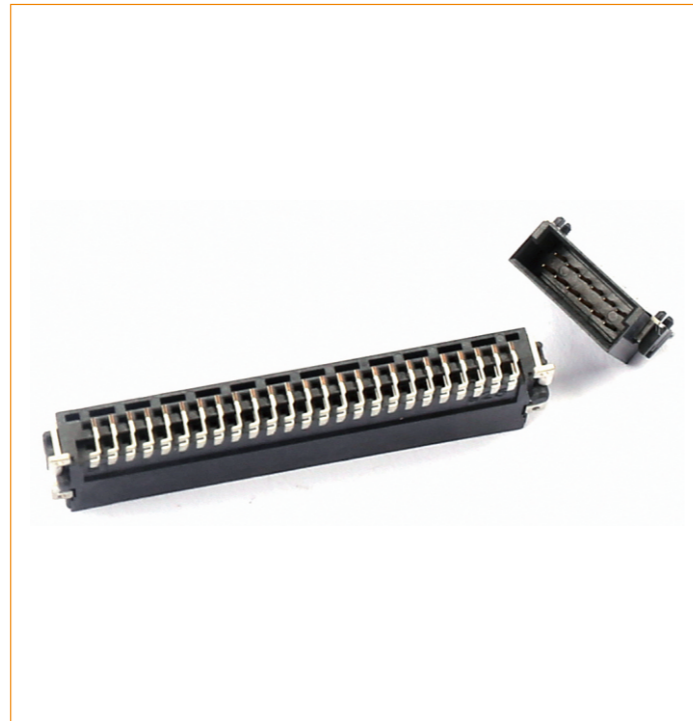
Pitch 2.0mm(0.079")
WFLDM01-A001 Series



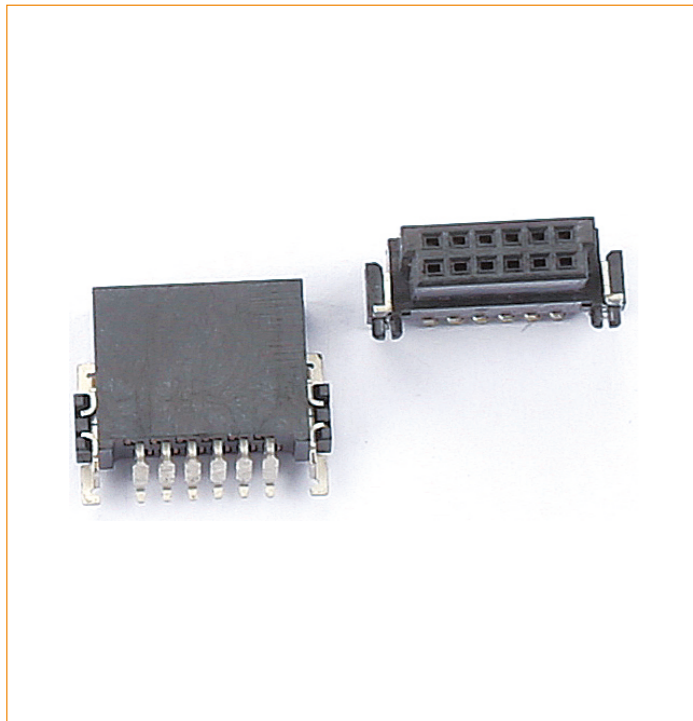
Pitch 2.54mm(0.1")
WFNS2-21 Series



Pitch 1.27mm(0.05")
ELHF1201



Pitch 1.27mm(0.05")
ELHFIR201



Pitch 1.27mm(0.05")
ELHMIR201



Pitch 1.27mm(0.05")
ERN244



EL-1205 CR1220



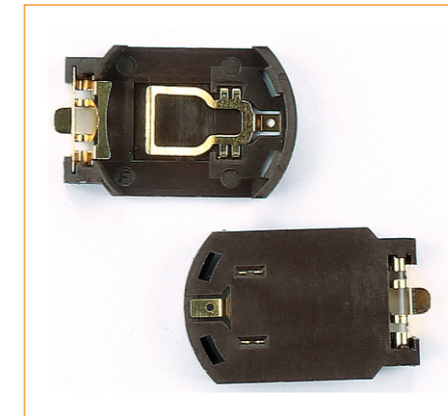
EL-1206 CR1220



EL-2011 CR2032



EL-2018 CR2032



EL-2017 CR2032



EL-2035 Cr2032



EL-2405 CR2450



EL-2413 CR2430



EL-1865AA01P



EL-3004 18650



EL-1865AA02P



EL-3001 18650



LR4402P



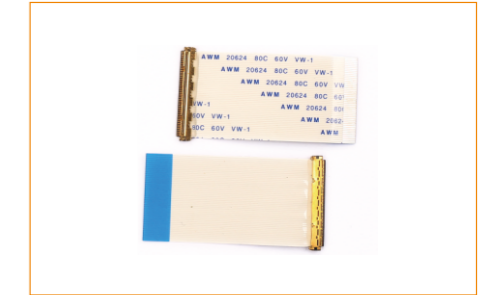
EL-1865AA03P



Pitch 1.0mm(0.039")
FFC112DL



Pitch 0.5mm(0.02")
FFC0520AL



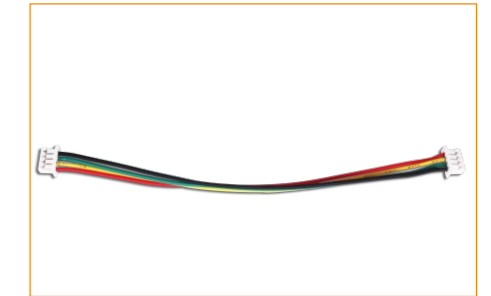
Pitch 0.5mm(0.02")
LVDS0550AL



Pitch 0.5mm(0.02")
FFC0530DL



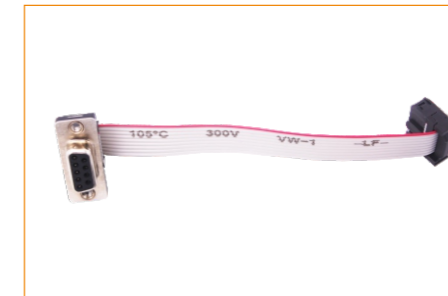
2.54mm Wire Harness



1.25mm Wire Harness



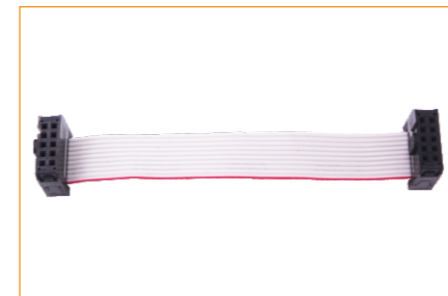
ELDC5521L300D



DSUBIDCL105(ELE01-DE-9 X 1)



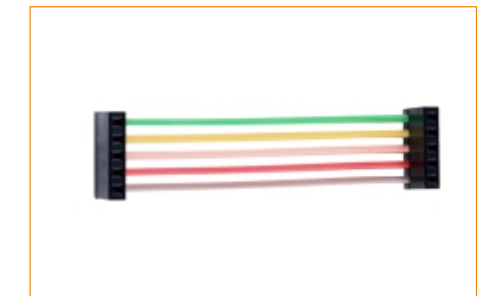
1.27MM IDC Cable



2.54MM IDC Cable



2.5mm wire harness



2.54mm wire harness



SMA



N Male to SMA Male



MCX-IPX



SMA-K



TNC



UFL-SMA



Liquid Chromatograph
For RoHS 2.0



Flash Vision



Humidity Temp



Reflow



RoHS Tester



Insulation Resistance



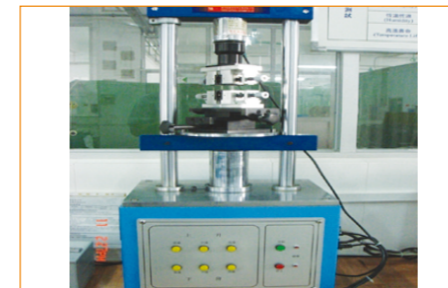
2.5D



X-RAY1



Thermal Shock



Mating Unmating Tester



Dielectric Withstanding Voltage



Salty Spray

