

# CITA Smart 22



## Commercial Charging Solution

CITA Smart 22 commercial charger provides fast charging to an electric vehicle, using the chargers on-board three phase supply. CITA Smart 22 designed with a type 2 charging socket, the charger is compatible with either type 1, type 2 or GBT cable. Compliant with the industrial standards, the charger use MID certified meter to ensure accuracy and built-in RCD to secure the safety. CITA Smart 22 can be connected to a charging network with the help of CITA Charger Management System portal or any 3rd party CPMS. Multiple public chargers in one location can be integrated into the network with only one Internet communication connection.



**Efficient Charging  
with Load Balancing**



**22kW Maximum Power Range**



**Compatible with all  
Type 2 Charging Cables**



**CITA Smart EV App Operation  
via WiFi/4G/Ethernet**



**RFID Access**



**Connects to any CPMS  
supporting OCPP 1.6**



**3-year warranty**



Measuring Instrument Directive  
2014/32/UE - Approved

# Electrical Specifications



## AC Nominal Input

Phases/Lines	3 phase + neutral + PE
Rated Voltage	400V±10%
Rated Current	32A
Frequency	50/60Hz

## AC Nominal Output

Output Voltage	400V±10%
Output Current	6 - 32A programmable
Output Power	22kW

# General Specifications

## Structure Design

Charging Socket	IEC 62196 Type 2, IP54, Locking
Charging Mode	Mode 3 (IEC 61851-1 / SAE J1772 compliant communication protocol)
Housing Material	High impact plastic
LED Status Indication	Green, Amber, Red
RFID Card/Tag	Yes
RFID Card/Tag Qty.	5 supplied
MID Approved kWh Meter	Yes
6mA DC Trip	Integrated

## Environmental Index

Operating Temperature	-30 ~ +50°C
Working Humidity	5%~95% without condensation
Working Altitude	<2000m
IP Rating	IP54
Mounting Method	On a wall or on a poll

## Package Information

Product Dimension (WxHxD)	342mm x 352mm x 132mm
Package Dimension (WxHxD)	435mm x 435mm x 225mm
Net Weight	4.90Kg
Gross Weight	6.20Kg

## Protection

### Multiple Protection

Over/Under voltage protection, Overload protection, Short circuit protection, Current leakage protection, Grounding protection, Surge protection, Over/Under temperature protection

### Safety Standard

CE Marked, EMC Directive 2014/30/EU, IEC 61851-1, IEC 61851-22, IEC 62196-2

### Dynamic Load Balancing

Yes, via cloud software

### Earthing Arrangements

TT, TNS, TNCS (PME)

### Earth Leakage Protection

A dedicated 30mA Type A RCD must be used on the supply circuit

### Warranty

3-years

## Communication

### Communication Protocol

OCPP 1.6 - JSON

### Communication Method

WiFi, Optional: 4G/Ethernet

### Programmable Charging Time

Yes, preset from APP

### Programmable Charging Power

Yes, preset from APP

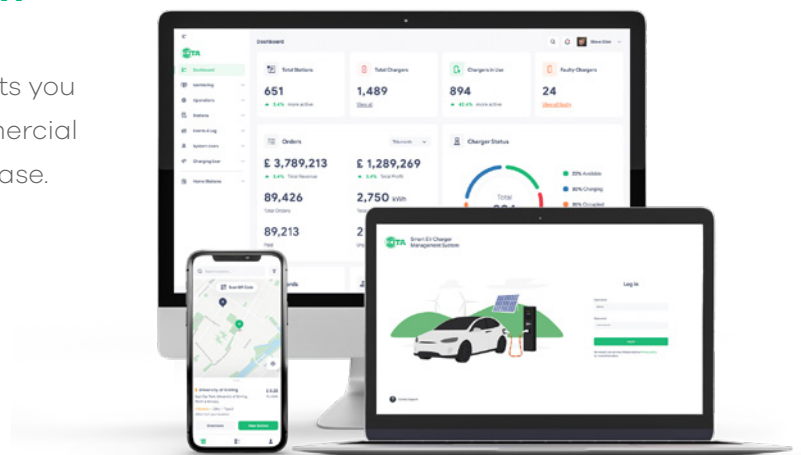
### Mobile App Availability

Yes, Android and IOS App

## CITA Smart EV Charger Management System

CITA charger management system software lets you track, manage and optimize CITA Smart commercial chargers from wherever and whenever you please.

- Easy & Smart Management
- Analytics of your Business Growth
- Simple Invoicing System
- Scale your charging network easily
- Distribute available power with Dynamic Load Balancing and much more



Disclaimer: Information has been carefully checked and is believed to be accurate; however, no responsibility is assumed for inaccuracies. The status of the product(s) described in the data sheet may have changed since the date of publication and therefore that may be outdated without further notifications. For any further inquiries please contact our nearest sales office via e-mail to [info@citaevcharger.co.uk](mailto:info@citaevcharger.co.uk) or through phone.

**United Kingdom (HQ)**

52 Deerdykes View, Westfield Park, Cumbernauld,  
Glasgow, G68 9HN, United Kingdom  
Phone: 0800 147 CITA(2482)

**United Arab Emirates**

Unit 2106, Al Thanyah Fifth, HDS Tower, Cluster F,  
Jumeirah Lakes Towers, P.O. Box 191946, Dubai, UAE  
Phone: +971 4 5579828 Fax: +971 4 5579829

Disclaimer: Information has been carefully checked and is believed to be accurate; however, no responsibility is assumed for inaccuracies. The status of the product(s) described in the data sheet may have changed since the date of publication and therefore that may be outdated without further notifications. For any further inquiries please contact our nearest sales office via e-mail to [info@citaevcharger.co.uk](mailto:info@citaevcharger.co.uk) or through phone.