

SESA Driver monitoring (DMS) - Ref. SDM7+



After speeding and drink-driving, the third major cause of vehicle accidents is drowsiness. This is the reason why, SESALY offers SESA Driver monitoring (DMS) solution. And for even more safety, this on-board device operates also when the driver wears a facemask.

Here is above the proof in image : the alert for drowsiness of a driver equipped with a mask and glasses !

This **advanced driver fatigue alert** complies with regulation applied to vehicles dedicated to passenger transport: R10 05 EMC (electromagnetic compatibility).

This new **advanced driver fatigue alert (DMS)** has been created **to alert the driver the first drowsiness or distraction signs**. Thanks to 6 warning functions avoiding the drowsiness, this new generation of driver fatigue alert improves on-board and surroundings safety of buses and coaches :

1. Driver **drowsiness** alert
2. Driver **distraction** alert
3. Driver **yawing** alert
4. Driver **using phone** alert
5. Driver **smoking** alert
6. **Driver detection** and **video recording**

This fatigue warning device has many advantages, such as **video recording and FMS (Fleet Management System) data transmission**.

Thanks to some distinctive technical features, this alert solution is performant and easy to use :

- This alert solution is composed of a main unit, power cable 3P, PCI Box, hexagon wrench 4 x screws, micro SD card (consumable).
- It operates with a nominal operating voltage of 12/24 Vdc
- It includes an ARM Cortex A7 quad as main processor and an ARM Cortex M0 as the sub processor (for illuminator and camera control).
- The different camera view angles are 42° (D), 34° (H) and 26° (V)

SESA Driver monitoring (DMS) - Ref. SDM7+

- This driver fatigue alert has a CBS 1Vp-p 75? video output
- This driving monitoring for buses and coaches is easy to install as it is simply wall mounted on the dashboard
- It operates at temperatures ranging from -20 to + 70 ° C
- It is discreet owing to its black color
- It consumes only 4.5W or 0.375A.

On request, this advanced driver fatigue alert is also available with following options:

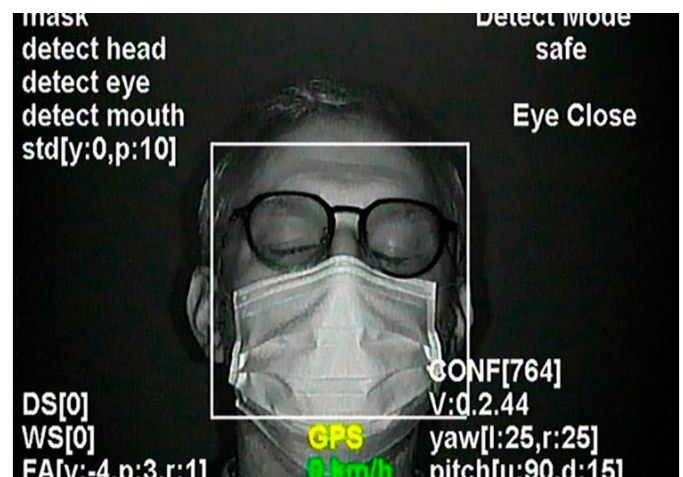
- Contactless CAN reader
- FMS cable (RS-232)
- Vibration accessory
- Ethernet cable
- Video recording

TECHNICAL CHARACTERISTICS

Brand	Sesaly
Voltage	12/24 V
Options, upon request	Non-contact CAN reader, FMS RS-232 cable, Ethernet cable, accessory to limit vibrations, video recording
Composition	main unit, 3P power cable, PCI case, 4 hex head screws, MicroSD card (consumable)
EMC	ECE R10-05
Industry	Buses and Coaches, Trucks

OTHER VISUALS

6 fonctions d'alerte conducteur en 1! 6 driver alert functions in 1!



www.vignal-group.com - contact@vignal-group.com

France Lyon HQ : +33 (0)4 72 917 917
France Caen : +33 (0)2 31 74 73 13
France Le Mans : +33 (0)2 43 50 14 14

Switzerland Rancate : +41 (0) 91 640 50 80
US Mosinee : +1 715 693 1530
China Changzhou : +86 137 7686 3469



Print date : 15/05/2023